

(LZZRD.LZZRD4) 21336

# LZZRD FOUR ARRIVAL (RNAV)

AL-12 (FAA)

ALBUQUERQUE INTL SUNPORT (ABQ)

ALBUQUERQUE, NEW MEXICO

RNAV 1 - DME/DME/IRU or GPS

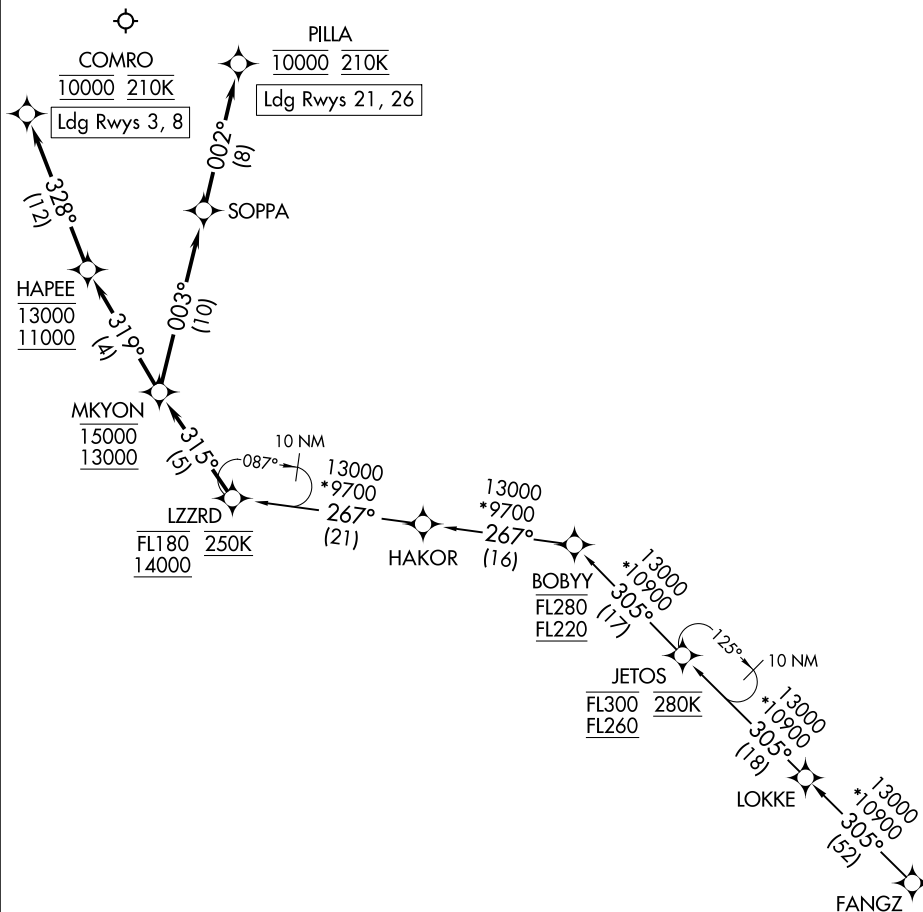
RADAR required.

ALBUQUERQUE APP CON

123.9 354.1

D-ATIS

118.0 257.7



CAUTION: Glider activity sunrise to sunset; 30 to 50 miles east of KABQ; 17500 feet MSL and below.

NOTE: Turbojet aircraft only.

NOTE: BOBYY transition: ATC assigned only.

NOTE: Landing Rwys 3, 8: expect RADAR vectors to final approach course prior to COMRO.

NOTE: Landing Rwys 21, 26: expect RADAR vectors to final approach course prior to PILLA.

(NARRATIVE ON FOLLOWING PAGE)

NOTE: Chart not to scale.

# LZZRD FOUR ARRIVAL (RNAV)

(LZZRD.LZZRD4) 02DEC21

ALBUQUERQUE, NEW MEXICO

ALBUQUERQUE INTL SUNPORT (ABQ)

SW-1, 26 DEC 2024 to 23 JAN 2025

SW-1, 26 DEC 2024 to 23 JAN 2025

ARRIVAL ROUTE DESCRIPTION

BOBYY TRANSITION (BOBYY.LZZRD4)

FANGZ TRANSITION (FANGZ.LZZRD4)

From LZZRD on track 315° to cross MKYON between 13000 and 15000.

LANDING RUNWAY 3: From MKYON on track 319° to cross HAPEE between 11000 and 13000, then on track 328° to cross COMRO at 10000 and at 210K. Expect RNP, GPS or ILS RWY 3 approach or RADAR vectors to final approach course.

LANDING RUNWAY 8: From MKYON on track 319° to cross HAPEE between 11000 and 13000, then on track 328° to cross COMRO at 10000 and at 210K. Expect RNP Z approach or RADAR vectors to final approach course for the ILS/GPS RWY 8 approaches.

LANDING RUNWAY 21: From MKYON on track 003° to SOPPA, then on track 002° to cross PILLA at 10000 and at 210K. Expect RNP Z RWY 21 approach or RADAR vectors to final approach course.

LANDING RUNWAY 26: From MKYON on track 003° to SOPPA, then on track 002° to cross PILLA at 10000 and at 210K. Expect RNP Z RWY 26 approach or RADAR vectors to final approach course.

SW-1, 26 DEC 2024 to 23 JAN 2025

SW-1, 26 DEC 2024 to 23 JAN 2025