

# MIERA TWO ARRIVAL

AL-12 (FAA)

ALBUQUERQUE, NEW MEXICO

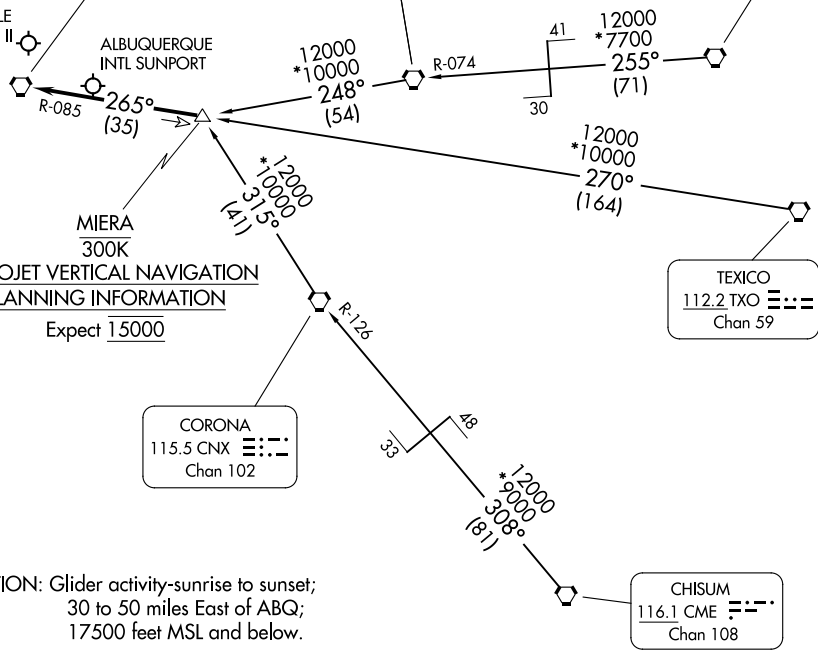
ALBUQUERQUE APP CON  
 123.9 354.1  
 ABQ D-ATIS  
 118.0 257.7  
 AEG ATIS  
 119.025

ALBUQUERQUE  
 113.2 ABQ Chan 79

ANTON CHICO  
 117.8 ACH Chan 125

TUCUMCARI  
 113.6 TCC Chan 83

DOUBLE EAGLE II



TURBOJET VERTICAL NAVIGATION  
PLANNING INFORMATION  
 Expect 15000

CAUTION: Glider activity-sunrise to sunset;  
 30 to 50 miles East of ABQ;  
 17500 feet MSL and below.

NOTE: Chart not to scale.

### ARRIVAL ROUTE DESCRIPTION

**CHISUM TRANSITION (CME.MIERA2):** From over CME VORTAC via CME R-308 and CNX R-126 to CNX VORTAC, then via CNX R-315 to MIERA DME fix. Thence. . .

**TEXICO TRANSITION (TXO.MIERA2):** From over TXO VORTAC via TXO R-270 and ABQ R-085 to MIERA DME fix. Thence. . .

**TUCUMCARI TRANSITION (TCC.MIERA2):** From over TCC VORTAC via TCC R-255 and ACH R-074 to ACH VORTAC, then via ACH R-248 to MIERA DME fix. Thence. . .

. . . From over MIERA DME fix via ABQ R-085 to ABQ VORTAC. Expect vectors to final approach course after passing MIERA DME fix.

SW-1, 26 DEC 2024 to 23 JAN 2025

SW-1, 26 DEC 2024 to 23 JAN 2025