

| | | | |
|--|------------------------|---|-------------|
| WAAS CH 61007 W31A | APP CRS 315° | Rwy Idg TDZE 1423 Apt Elev 1425 | 5099 |
|--|------------------------|---|-------------|

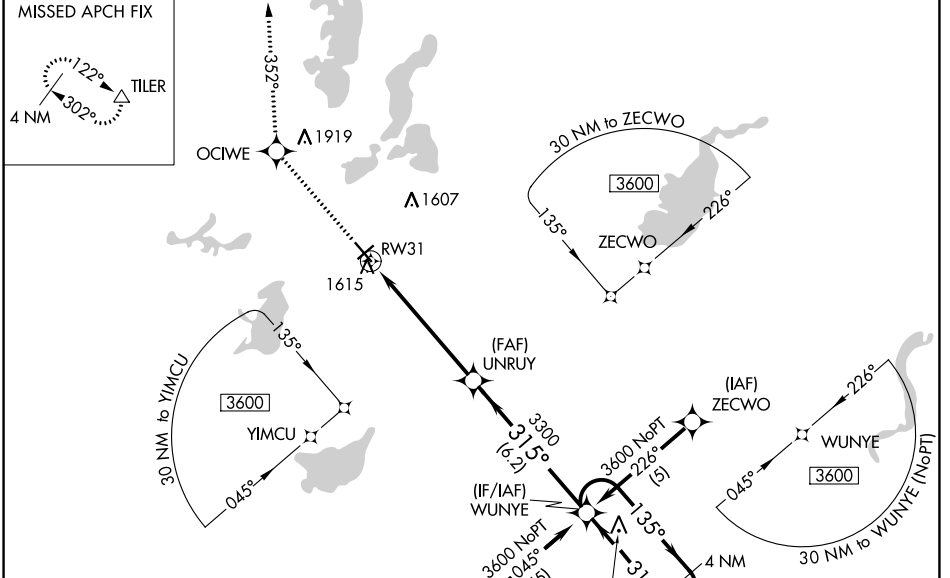
RNAV (GPS) RWY 31

ALEXANDRIA RGNL/CHANDLER FLD (A.XN)

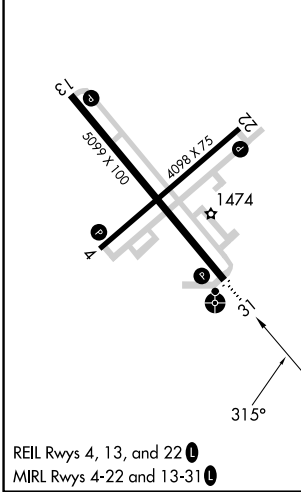
⚠ Inoperative table does not apply to LPV & LNAV/VNAV Cats A/B/C and LNAV Cat C. For uncompensated Baro-VNAV systems, LNAV/VNAV NA below -17°C (2°F) or above 46°C (114°F). DME/DME RNP -0.3 NA. VDP and Baro-VNAV NA when using Glenwood altimeter setting. When local altimeter setting not received, use Glenwood altimeter setting and increase all DAs/MDAs 40 feet and increase LPV and LNAV/VNAV visibilities ½ mile all Cats.

ODALS
 MISSED APPROACH: Climb to 3500 direct OCFWE and via 352° track to TILER and hold.

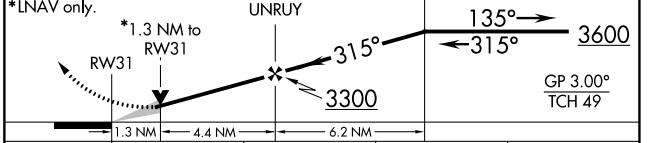
| | | |
|------------------------|--|---------------------------------|
| ASOS 118.375 | MINNEAPOLIS CENTER 126.1 269.2 | UNICOM 123.0 (CTAF) 0 |
|------------------------|--|---------------------------------|



| | |
|-----------|-----------|
| ELEV 1425 | TDZE 1423 |
|-----------|-----------|



| | | | | | |
|------|-------|---------|-------|-------|----------------------|
| 3500 | OCIFE | tr 352° | TILER | WUNYE | 4 NM Holding Pattern |
|------|-------|---------|-------|-------|----------------------|



| CATEGORY | A | B | C | D |
|--------------|--------|-------------|-------------------------|-------------------------|
| LPV DA | | 1815-1¼ | 392 (400-1¼) | |
| LNAV/VNAV DA | | 1885-1½ | 462 (500-1½) | |
| LNAV MDA | 1880-¾ | 457 (500-¾) | 1880-1¼ 457 (500-1¼) | 1880-1½ 457 (500-1½) |
| CIRCLING | 1920-1 | 495 (500-1) | 1940-1½ 515 (600-1½) | 2000-2 575 (600-2) |

NC-1, 26 DEC 2024 to 23 JAN 2025

NC-1, 26 DEC 2024 to 23 JAN 2025