

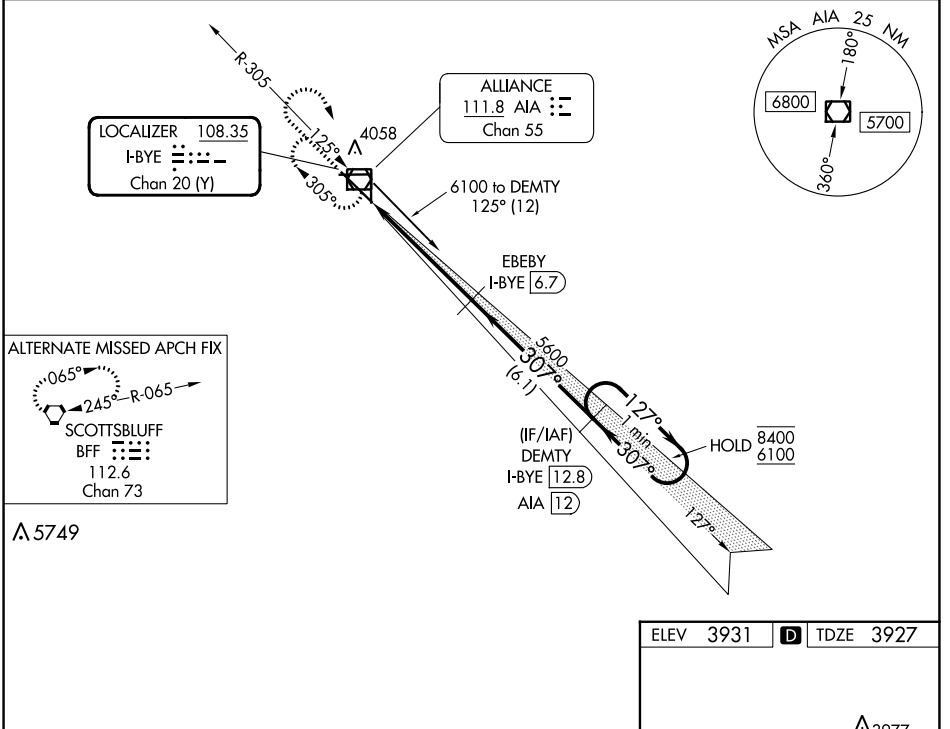
LOC/DME I-BYE <b>108.35</b> Chan 20 (Y)	APP CRS <b>307°</b>	Rwy Idg <b>9203</b> TDZE <b>3927</b> Apt Elev <b>3931</b>
---	------------------------	---

# ILS or LOC RWY 30

ALLIANCE MUNI (AIA)

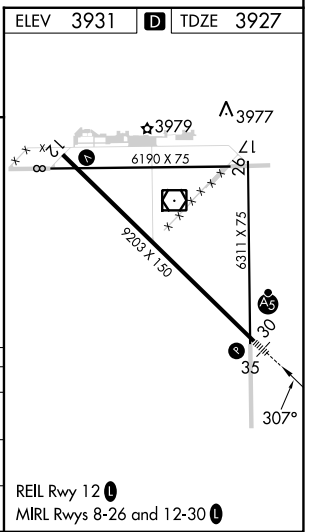
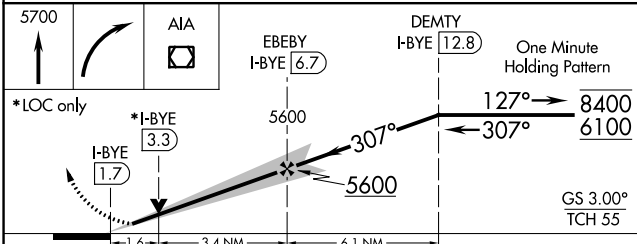
DME required. ▲ NA For inop ALS, increase S-LOC 30 Cats C/D visibility to 1½ SM.	MALSR 	MISSED APPROACH: Climb to 5700 then right turn direct AIA VOR/DME and hold.
--	-----------	---

ASOS <b>135.075</b>	DENVER CENTER <b>127.95 338.2</b>	UNICOM <b>123.0 (CTAF) 0</b>
------------------------	--------------------------------------	---------------------------------



NC-2, 26 DEC 2024 to 23 JAN 2025

NC-2, 26 DEC 2024 to 23 JAN 2025



CATEGORY	A	B	C	D
S-ILS 30	4127-½ 200 (200-½)			
S-LOC 30	4500-½ 573 (600-½)		4500-1¼ 573 (600-1¼)	
CIRCLING	4500-1 569 (600-1)	4520-1 589 (600-1)	4580-1¾ 649 (700-1¾)	4640-2¼ 709 (800-2¼)