

VORTAC ALS 113.9 Chan 86	APP CRS 142°	Rwy Idg TDZE Apt Elev 7540	N/A N/A 7540
--	------------------------	--	---------------------------

VOR-B

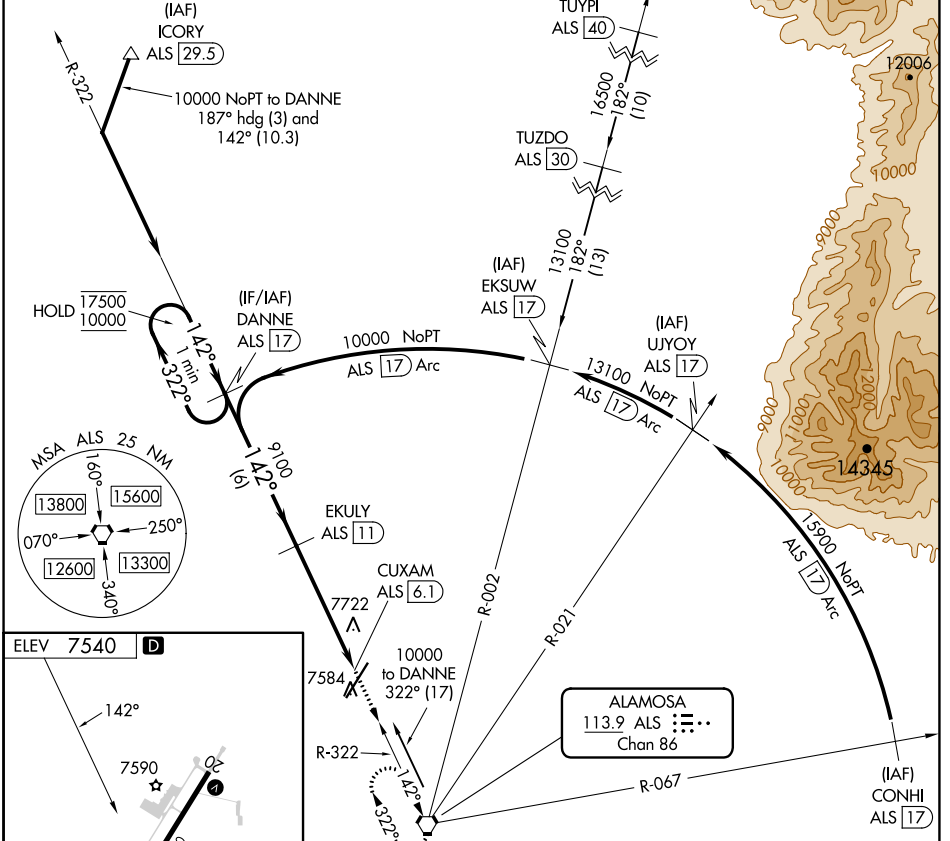
SAN LUIS VALLEY RGNL/BERGMAN FLD (ALS)

DME required. RADAR required for arrivals at TUYPI.

▼
❄ -26°C

MISSED APPROACH: Climb to 11000 direct ALS VORTAC and hold, continue climb-in-hold to 11000.

ASOS 135.175	DENVER CENTER 128.375 379.95	UNICOM 122.8 (CTAF) 0
------------------------	--	--



SW-1, 26 DEC 2024 to 23 JAN 2025

SW-1, 26 DEC 2024 to 23 JAN 2025

ELEV 7540 D
REIL Rwy 20 0
HIRL Rwy 2-20 0

DANNE ALS 17		EKSUW ALS 11		CUXAM ALS 6.1	
One Minute Holding Pattern				11000 ALS	
17500 ← 322°		9100		↑	
10000 → 142°				◑	
				ALS	
		6 NM		4.9 NM	
CATEGORY	A	B	C	D	
C CIRCLING	8040-1	500 (500-1)	8080-1½ 540 (600-1½)	8100-2	560 (600-2)