

# HI-VOR or TACAN RWY 22

VORTAC PNH <b>116.6</b> Chan <b>113</b>	APCH CRS <b>235°</b>	Rwy Idg <b>13,502</b> TDZE <b>3606</b> Arpt Elev <b>3607</b>
---	-------------------------	--

[USAF]

RICK HUSBAND AMARILLO INTL (KAMA)

DME required

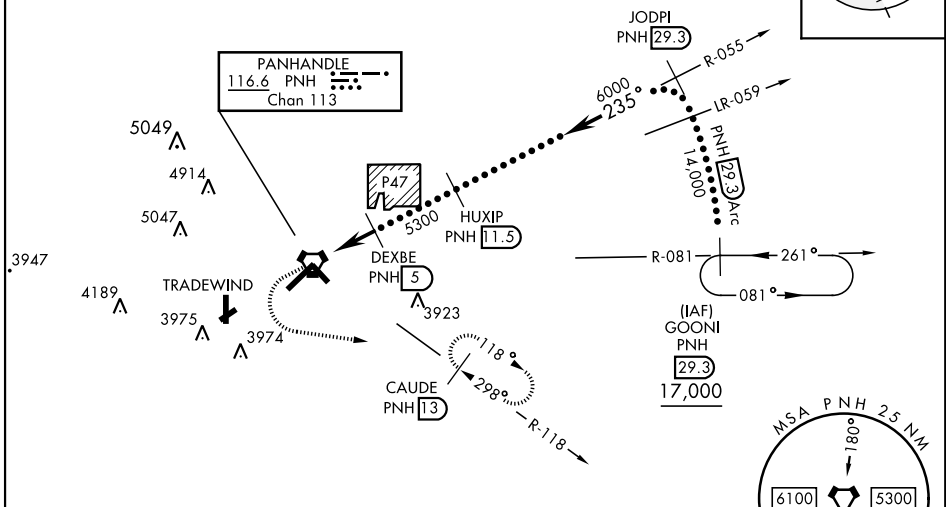
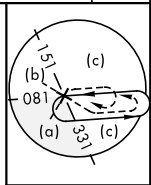
- \* When ALS inop, increase CAT CDE vis to 1½ SM.
- \*\* When ALS inop, increase CAT CDE vis to 1% SM.
- ALT MINS N/A when local altimeter not available.



MISSED APPROACH: Climb to 4100 then climbing left turn to 5000 on heading 090° and PNH VORTAC R-118 to CAUDE and hold.

ATIS <b>118.85 350.3</b>	AMARILLO APP CON <b>119.5 307.0</b>	AMARILLO TOWER ★ <b>118.3 (CTAF) 0 257.9</b>	GND CON <b>121.9 348.6</b>	CLNC DEL <b>121.65 239.275</b>	ASR
-----------------------------	--	---	-------------------------------	-----------------------------------	-----

When local altimeter setting not received, use Borger altimeter setting.

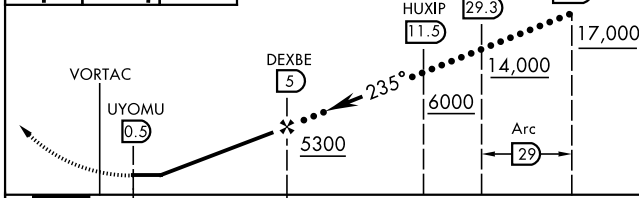


SC-2, 26 DEC 2024 to 23 JAN 2025

SC-2, 26 DEC 2024 to 23 JAN 2025

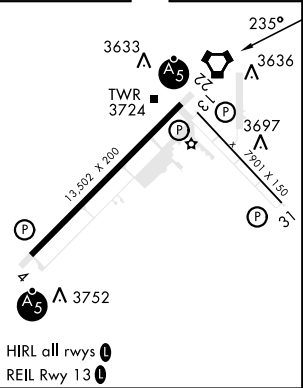
EMERG SAFE ALT 100 NM 7500

4100	5000	CLAUDE PNH 13	VGSI and Descent angles not coincident	JODPI R-055 29.3	GOONI R-081 29.3
------	------	------------------	--	---------------------	---------------------



ELEV 3607	TDZE 3606
-----------	-----------

CATEGORY	C	D	E
S-22 *		4000-5/8 394 (400-3/8)	
CIRCLING	4240-1 3/4 633 (700-1 3/4)	4280-2 1/4 673 (700-2 1/4)	4460-3 853 (900-3)
BORGER ALTIMETER SETTING			
S-22 **		4160-1 1/8 554 (600-1 1/8)	
CIRCLING	4400-2 1/4 793 (800-2 1/4)	4420-2 3/4 813 (900-2 3/4)	4620-3 1013 (1100-3)



# HI-VOR or TACAN RWY 22