

AMARILLO, TEXAS

HI-VOR or TACAN RWY 4

VORTAC PNH 116.6 Chan 113	APCH CRS 037°	Rwy Idg 13,502 TDZE 3607 Arprt Elev 3607	[USAF]	RICK HUSBAND AMARILLO INTL (KAMA)
---	-------------------------	---	--------	-----------------------------------

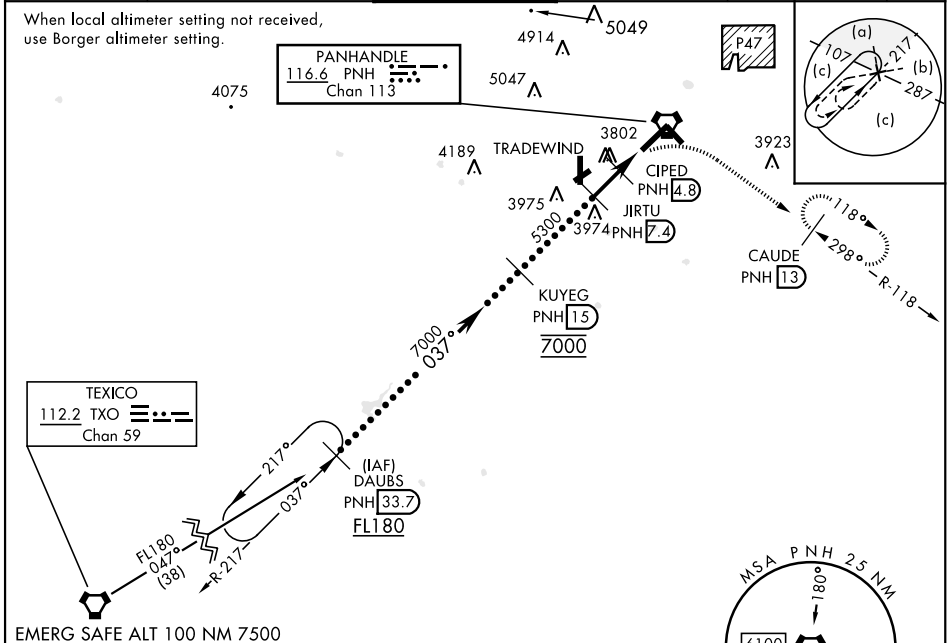
DME required

▼ * When ALS inop, increase CAT D vis to 1½ miles; CAT E vis to 1½ miles.
** When ALS inop, increase CAT CD vis to 1½ miles; CAT E vis to 1¾ miles.

MALSR **A5**

MISSED APPROACH: Climbing right turn to 5000 on heading 090° and PNH VORTAC R-118 to CAUDE/PNH 13 DME and hold.

ATIS 118.85 350.3	AMARILLO APP CON 119.5 307.0	AMARILLO TOWER * 118.3 (CTAF) 0 257.9	GND CON 121.9 348.6	CLNC DEL 121.65 239.275	ASR
-----------------------------	--	---	-------------------------------	-----------------------------------	-----



EMERG SAFE ALT 100 NM 7500

DAUBS (PNH 33.7)

KUYEG (PNH 15)

JIRTU (PNH 7.4)

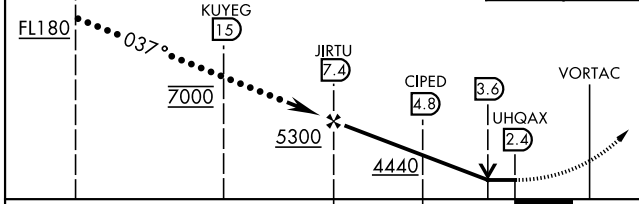
CIPED (PNH 4.8)

UHQAX (PNH 2.4)

VOR TAC

VDP N/A when using BORGER altimeter setting.

5000 hdg 090° CAUDE PNH 13



CATEGORY	C	D	E
S-4 *	4040/40 433 (500-¾)	4040/50 433 (500-1)	
C CIRCLING	4240-1¾ 633 (700-1¾)	4280-2¼ 673 (700-2¼)	4460-3 853 (900-3)
BORGER ALTIMETER SETTING			
S-4 **	4200-1¼	593	(600-1¼)
C CIRCLING	4400-2¼ 793 (900-2¼)	4440-2¾ 833 (900-2¾)	4620-3 1013 (1100-3)

ELEV 3607 **D** TDZE 3607

3633 A 3636 A 3697 P 3752 A5

TWR 3724

15,502 x 200

2.5 NM

6100 5100

HIRL all rwys **1**
REIL Rwy 13 **1**

HI-VOR or TACAN RWY 4

SC-2, 26 DEC 2024 to 23 JAN 2025

SC-2, 26 DEC 2024 to 23 JAN 2025