

LOC I-AMA 110.3	APP CRS 038°	Rwy Idg 13502
		TDZE 3607
		Apt Elev 3607

ILS or LOC RWY 4

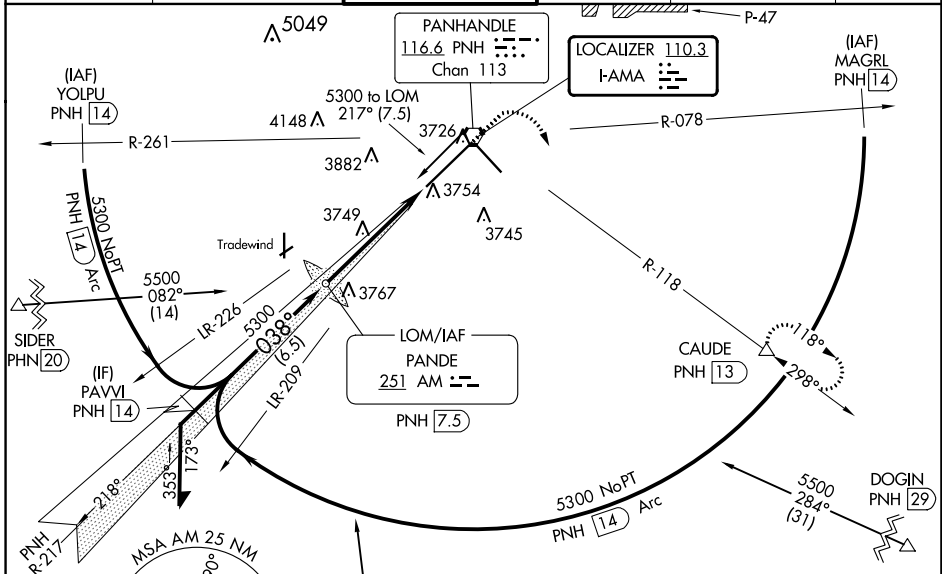
RICK HUSBAND AMARILLO INTL (AMA)

ADF or DME required.

ASR When local altimeter setting not received, use Borger altimeter setting and increase S-ILS 4 DA to 3960 feet and all visibilities to RVR 3000. Increase all MDAs 160 feet and S-LOC 4 visibility Cat C/D/E to RVR 6000 and Circling visibility Cat C/D 1/2 SM. For inop ALS, increase visibility S-ILS 4 Cat E to 4000 RVR and S-LOC 4 Cat C/D/E to RVR 6000. For inop ALS when using Borger altimeter setting, increase visibility S-ILS 4 all Cats to 5500 and S-LOC 4 Cat C/D/E to 1 1/2 SM. * RVR 1800 authorized with use of FD or AP or HUD to DA (NA when using Borger altimeter setting).

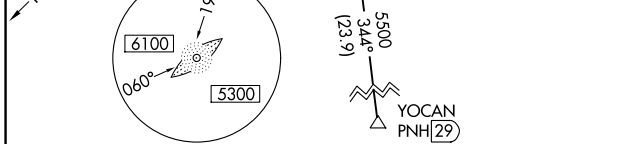
MALS MISSED APPROACH: Climb to 4100 then climbing right turn to 5000 on PNH VORTAC R-118 to CAUDE/PNH 13 DME and hold.

ATIS 118.85 350.3	AMARILLO APP CON* 119.5 307.0	AMARILLO TOWER* 118.3(CTAF) 257.9	GND CON 121.9 348.6	CLNC DEL 121.65 239.275	UNICOM 122.95
-----------------------------	---	---	-------------------------------	-----------------------------------	-------------------------

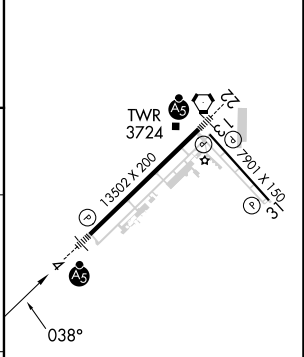
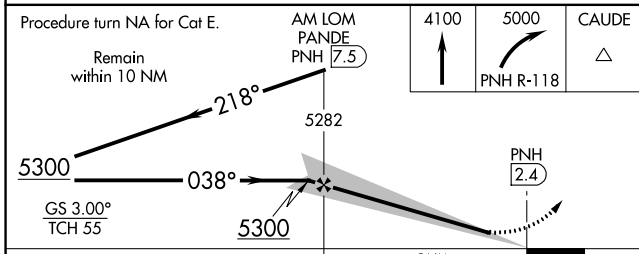


SC-2, 26 DEC 2024 to 23 JAN 2025

SC-2, 26 DEC 2024 to 23 JAN 2025



ELEV 3607	D	TDZE 3607
-----------	---	-----------



CATEGORY	A	B	C	D	E
S-ILS 4*	3807/24 200 (200-1/2)				
S-LOC 4	4000/24	393 (400-1/2)	4000/35	393 (400-3/4)	
CIRCLING	4080-1	473 (500-1)	4240-1 3/4	4280-2 1/4	4460-3
			633 (700-1 3/4)	673 (700-2 1/4)	853 (900-3)

REIL Rwy 13					
HIRL Rws 4-22 and 13-31					
FAF to MAP 5 NM					
Knots	60	90	120	150	180
Min:Sec	5:00	3:20	2:30	2:00	1:40