

APP CRS <b>218°</b>	Rwy Idg TDZE Apt Elev	<b>13502</b> <b>3606</b> <b>3607</b>
------------------------	-----------------------------	--

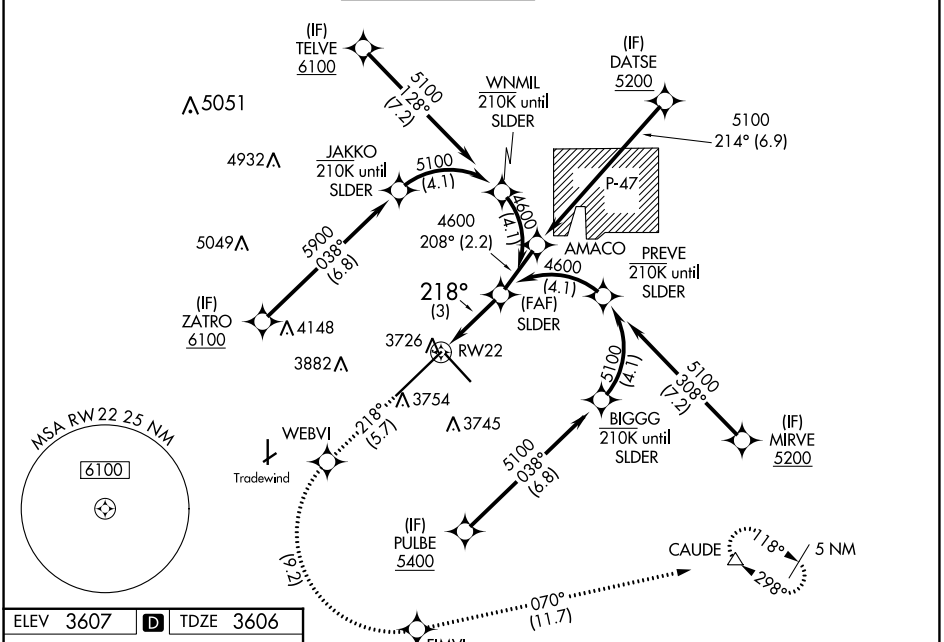
# RNAV (RNP) Z RWY 22

RICK HUSBAND AMARILLO INTL (AMA)

**ASR** For uncompensated Baro-VNAV systems, procedure NA below -14°C (7°F) or above 52°C (125°F). RF required. For inop ALS, increase RNP 0.14 all Cats visibility to 3/8 SM and increase RNP 0.30 all Cats visibility to 1/8 SM.

**MALS** MISSED APPROACH: (Do not exceed 185 K until FIMVI) Climb to 5400 on track 218° to WEBVI, left turn to FIMVI, then track 070° to CAUDE and hold.

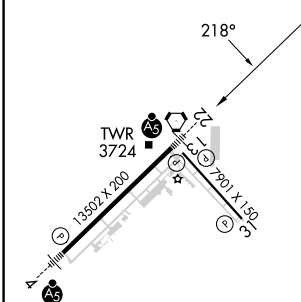
ATIS <b>118.85 350.3</b>	AMARILLO APP CON* <b>119.5 307.0</b>	AMARILLO TOWER* <b>118.3(CTAF) 257.9</b>	GND CON <b>121.9 348.6</b>	CLNC DEL <b>121.65 239.275</b>	UNICOM <b>122.95</b>
-----------------------------	---	---	-------------------------------	-----------------------------------	-------------------------



SC-2, 26 DEC 2024 to 23 JAN 2025

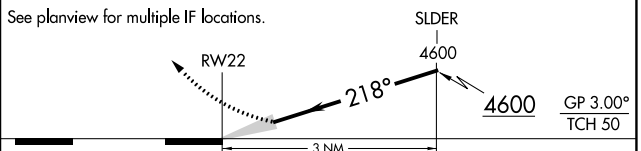
SC-2, 26 DEC 2024 to 23 JAN 2025

ELEV 3607	<b>D</b>	TDZE 3606
-----------	----------	-----------



## RNAV 1 - GPS or RADAR REQUIRED

VGSI and RNAV glidepath not coincident (VGSI Angle 3.00/TCH 77).	5400	WEBVI	FIMVI	CAUDE
	↑ tr 218°	✧	↷ ✧	tr 070° △



CATEGORY	A	B	C	D
RNP 0.14 DA		3884-1/2	278 (300-1/2)	
RNP 0.30 DA		3958-3/4	352 (400-3/4)	

## AUTHORIZATION REQUIRED