

APP CRS	Rwy Idg	7901
309°	TDZE	3601
	Apt Elev	3607

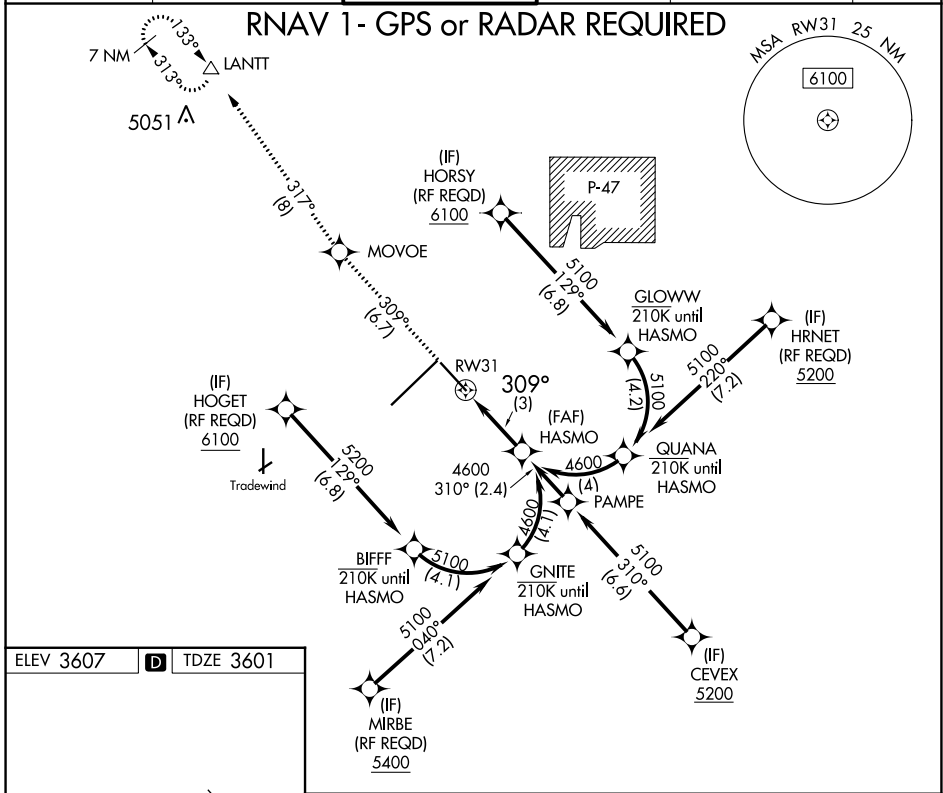
RNAV (RNP) Z RWY 31

RICK HUSBAND AMARILLO INTL (AMA)

ASR For uncompensated Baro-VNAV systems, procedure NA below -14°C (7°F) or above 51°C (124°F). GPS required.

MISSED APPROACH: Climb to 6200 on track 309° to MOVOE and track 317° to LANITT and hold.

ATIS	AMARILLO APP CON*	AMARILLO TOWER*	GND CON	CLNC DEL	UNICOM
118.85 350.3	119.5 307.0	118.3(CTAF) 257.9	121.9 348.6	121.65 239.275	122.95



ELEV 3607 **D** TDZE 3601

TWR 3724

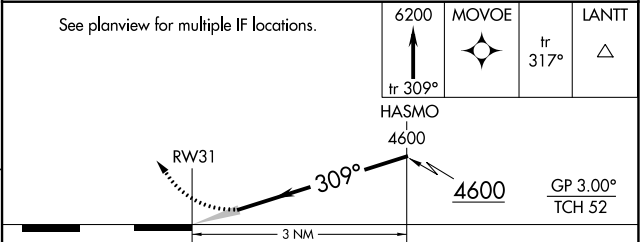
13502 x 200

7901 x 150

309°

REIL Rwy 13

HIRL Rwy 4-22 and 13-31



CATEGORY	A	B	C	D
RNP 0.30 DA		3930-1½	329 (400-1½)	

AUTHORIZATION REQUIRED

SC-2, 26 DEC 2024 to 23 JAN 2025

SC-2, 26 DEC 2024 to 23 JAN 2025