

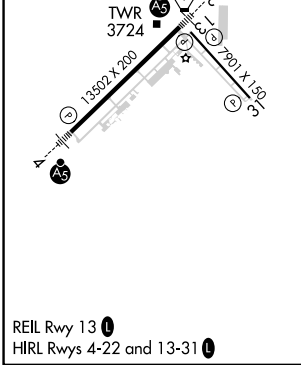
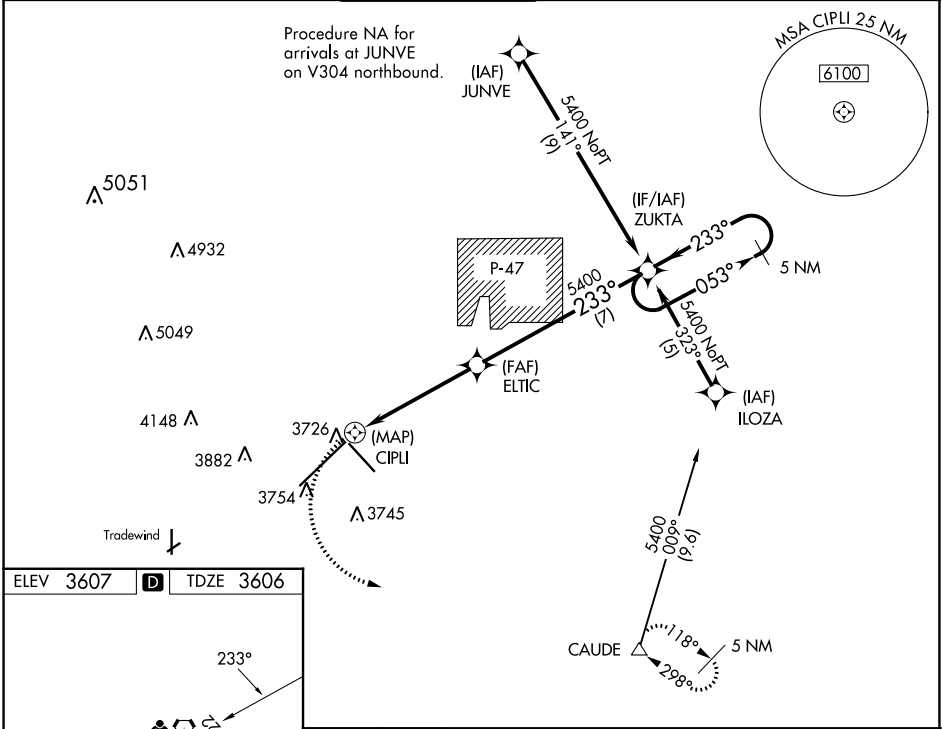
APP CRS 233°	Rwy Idg TDZE Apt Elev	13502 3606 3607
------------------------	-----------------------------	--

RNAV (GPS) Y RWY 22

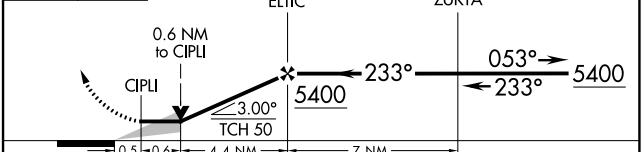
RICK HUSBAND AMARILLO INTL (AMA)

RNP APCH.			MALSR 	MISSED APPROACH: Climbing left turn to 5400 direct CAUDE and hold.	
 For inop ALS, increase Cat C/D/E visibility to RVR 6000.					

ATIS 118.85 350.3	AMARILLO APP CON* 119.5 307.0	AMARILLO TOWER* 118.3 (CTAF) 257.9	GND CON 121.9 348.6	CLNC DEL 121.65 239.275	UNICOM 122.95
-----------------------------	---	--	-------------------------------	-----------------------------------	-------------------------



5400	CAUDE	VGSI and descent angles not coincident (VGSI Angle 3.00/TCH 77).	5 NM Holding Pattern
------	-------	--	----------------------



CATEGORY	A	B	C	D	E
LNAV MDA	4020-1/2	414 (500-1/2)	4020-3/4 414 (500-3/4)	4020-1	414 (500-1)
CIRCLING	4080-1	473 (500-1)	4240-1 3/4 633 (700-1 3/4)	4280-2 1/4 673 (700-2 1/4)	4460-3 853 (900-3)

SC-2, 26 DEC 2024 to 23 JAN 2025

SC-2, 26 DEC 2024 to 23 JAN 2025