

| | | |
|---------------------------|------------------------|------------------------|
| LOC I-AIW 108.9 | APP CRS 309° | Rwy Idg 9002 |
| | | TDZE 733 |
| | | Apt Elev 777 |

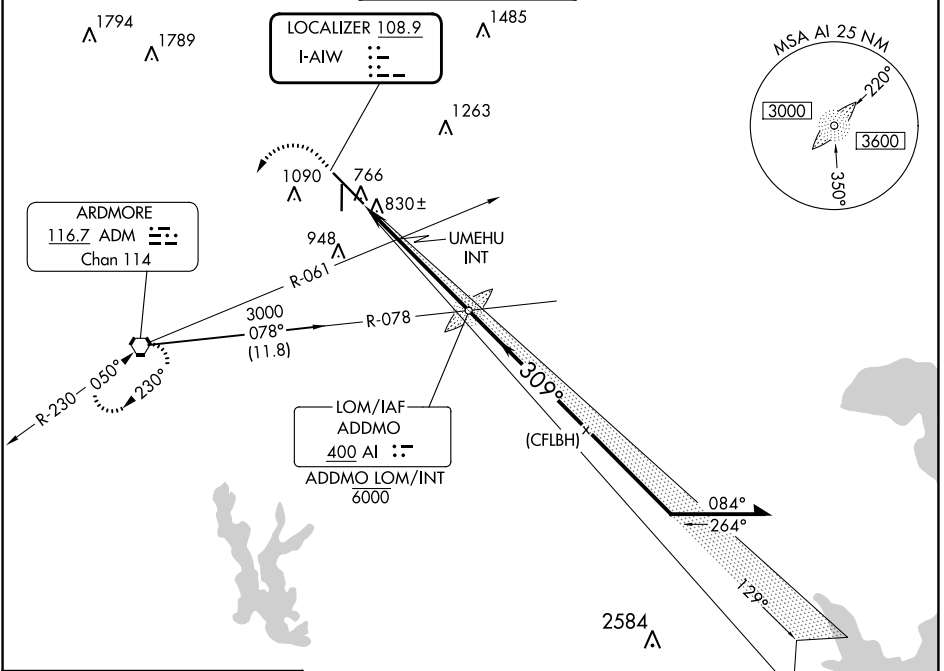
ILS or LOC RWY 31

ARDMORE MUNI (ADM)

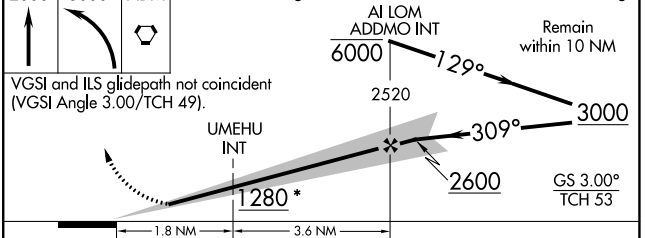
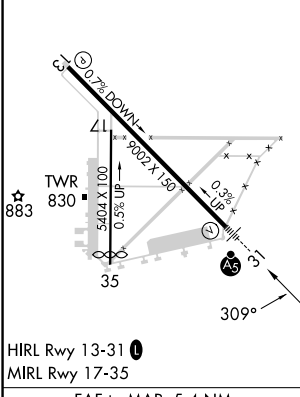
⚠ Autopilot coupled approach NA below 1360. Inop table does not apply to S-ILS 31 all Cats, S-LOC 31 Cats A and B, and UMEHU fix minimums S-LOC 31 Cats A and B. For inop ALS, increase UMEHU fix minimums S-LOC 31 Cats C and D visibility to 1 SM.

MALS MISSED APPROACH: Climb to 2000 then climbing left turn to 3000 direct ADM VORTAC and hold.

| | | | | |
|----------------------|--|--|-------------------------|-------------------------|
| ATIS 125.6 | FORT WORTH CENTER 124.75 323.0 | ARDMORE TOWER ★ 118.5 (CTAF) 257.7 | GND CON 121.8 | UNICOM 122.95 |
|----------------------|--|--|-------------------------|-------------------------|



ELEV 777 **D** TDZE 733



| CATEGORY | A | B | C | D |
|--|-----------------------|-----------------------|-----------------------|------------------------|
| S-ILS 31 | 936-1/2 203 (200-1/2) | | | |
| S-LOC 31* | 1280-1/2 | 547 (600-1/2) | 1280-1 1/8 | 547 (600-1 1/8) |
| CIRCLING | 1300-1 523 (600-1) | 1440-1 663 (700-1) | 1500-2 723 (800-2) | 1700-3 923 (1000-3) |
| UMEHU FIX MINIMUMS (DUAL RECEIVERS REQUIRED) | | | | |
| S-LOC 31 | 1080-1/2 | 347 (400-1/2) | 1080-5/8 | 347 (400-5/8) |
| CIRCLING | 1300-1 523 (600-1) | 1440-1 663 (700-1) | 1500-2 723 (800-2) | 1700-3 923 (1000-3) |

| | | | | | |
|-------------------|------|------|------|------|------|
| FAF to MAP 5.4 NM | | | | | |
| Knots | 60 | 90 | 120 | 150 | 180 |
| Min:Sec | 5:24 | 3:36 | 2:42 | 2:10 | 1:48 |

SC-1, 26 DEC 2024 to 23 JAN 2025

SC-1, 26 DEC 2024 to 23 JAN 2025