

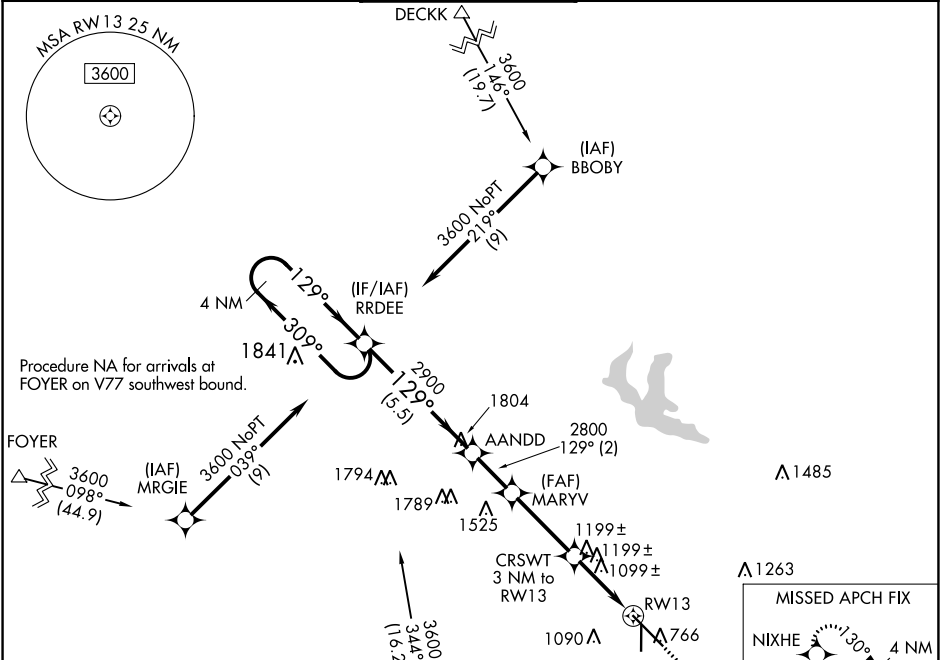
WAAS CH <b>53725</b> W13A	APP CRS <b>129°</b>	Rwy Idg TDZE Apt Elev	<b>9002</b> <b>777</b> <b>777</b>
---------------------------------	------------------------	-----------------------------	---

# RNAV (GPS) RWY 13

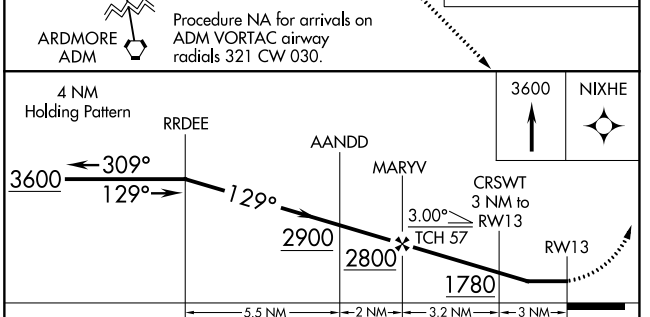
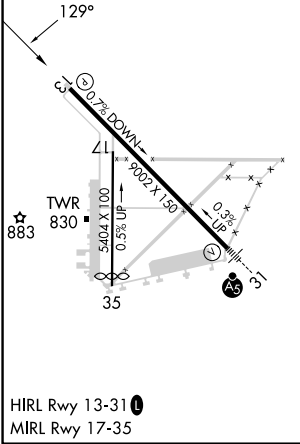
ARDMORE MUNI (ADM)

RNP APCH.		ARDMORE TOWER ★		GND CON	UNICOM
<p>▼ Rwy 13 helicopter visibility reduction below 1 SM NA. When local altimeter setting not received, use Ardmore Downtown Exec altimeter setting and increase all MDA 40 feet. Procedure NA at night.</p> <p>▲ MISSED APPROACH: Climb to 3600 direct NIXHE and hold.</p>		<p><b>125.6</b></p>		<p><b>121.8</b></p>	<p><b>122.95</b></p>

ATIS	FORT WORTH CENTER	ARDMORE TOWER ★	GND CON	UNICOM
<b>125.6</b>	<b>124.75 323.0</b>	<b>118.5 (CTAF) 0 257.7</b>	<b>121.8</b>	<b>122.95</b>



ELEV 777	<b>D</b>	TDZE 777
----------	----------	----------



CATEGORY	A	B	C	D
LP MDA	1360-1	583 (600-1)	1360-1¾	583 (600-1¾)
LNAV MDA	1460-1	683 (700-1)	1460-2	683 (700-2)

SC-1, 26 DEC 2024 to 23 JAN 2025

SC-1, 26 DEC 2024 to 23 JAN 2025