

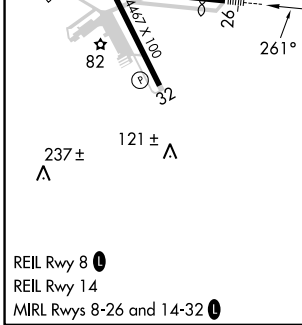
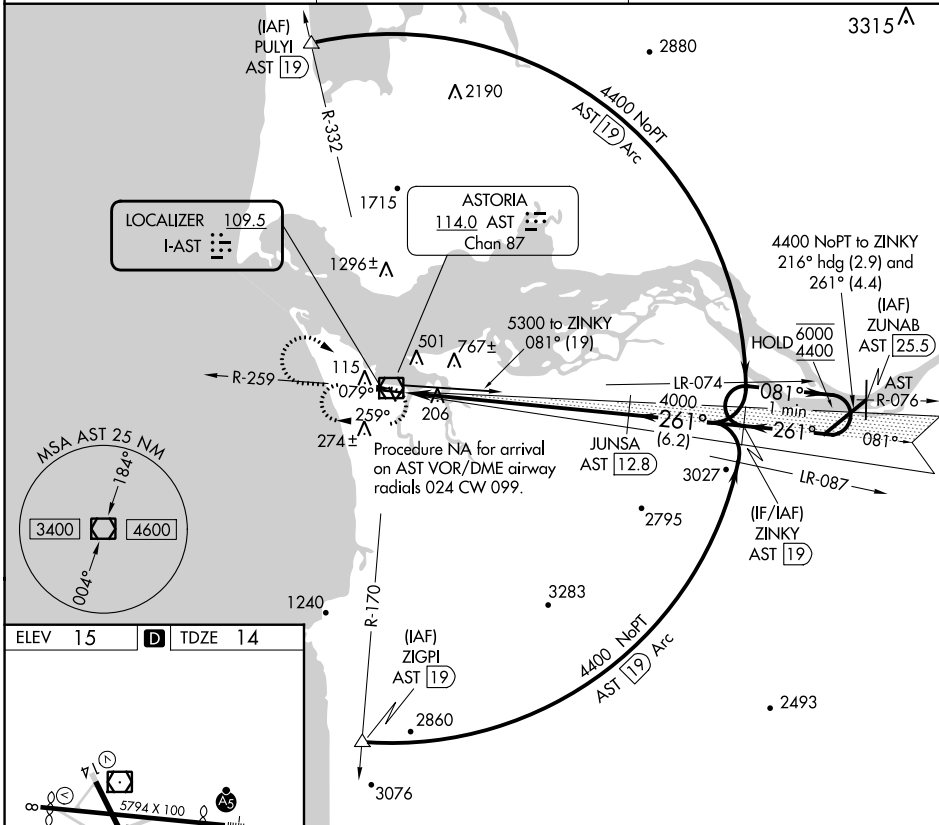
LOC I-AST 109.5	APP CRS 261°	Rwy Idg TDZE Apt Elev	4780 14 15
---------------------------	------------------------	-----------------------------	---------------------------------------

ILS RWY 26

ASTORIA RGNL (AST)

DME required for procedure entry.		MALSRL	MISSED APPROACH: Climb to 1500 then climbing right turn to 2900 direct AST VOR/DME and hold.
Rwy 26 helicopter visibility reduction below 3/4 SM NA. Inoperative table does not apply.			

ASOS 135.375	SEATTLE CENTER 124.2 317.6	UNICOM 122.8 (CTAF) 0
------------------------	--------------------------------------	---------------------------------



1500	2900	AST	ZINKY AST 19		One Minute Holding Pattern
			JUNSA AST 12.8		
12.3 NM		6.2 NM		GS 3.00° TCH 56	
CATEGORY	A	B	C	D	
S-ILS 26	264-1 250 (300-1)				

NW-1, 26 DEC 2024 to 23 JAN 2025

NW-1, 26 DEC 2024 to 23 JAN 2025