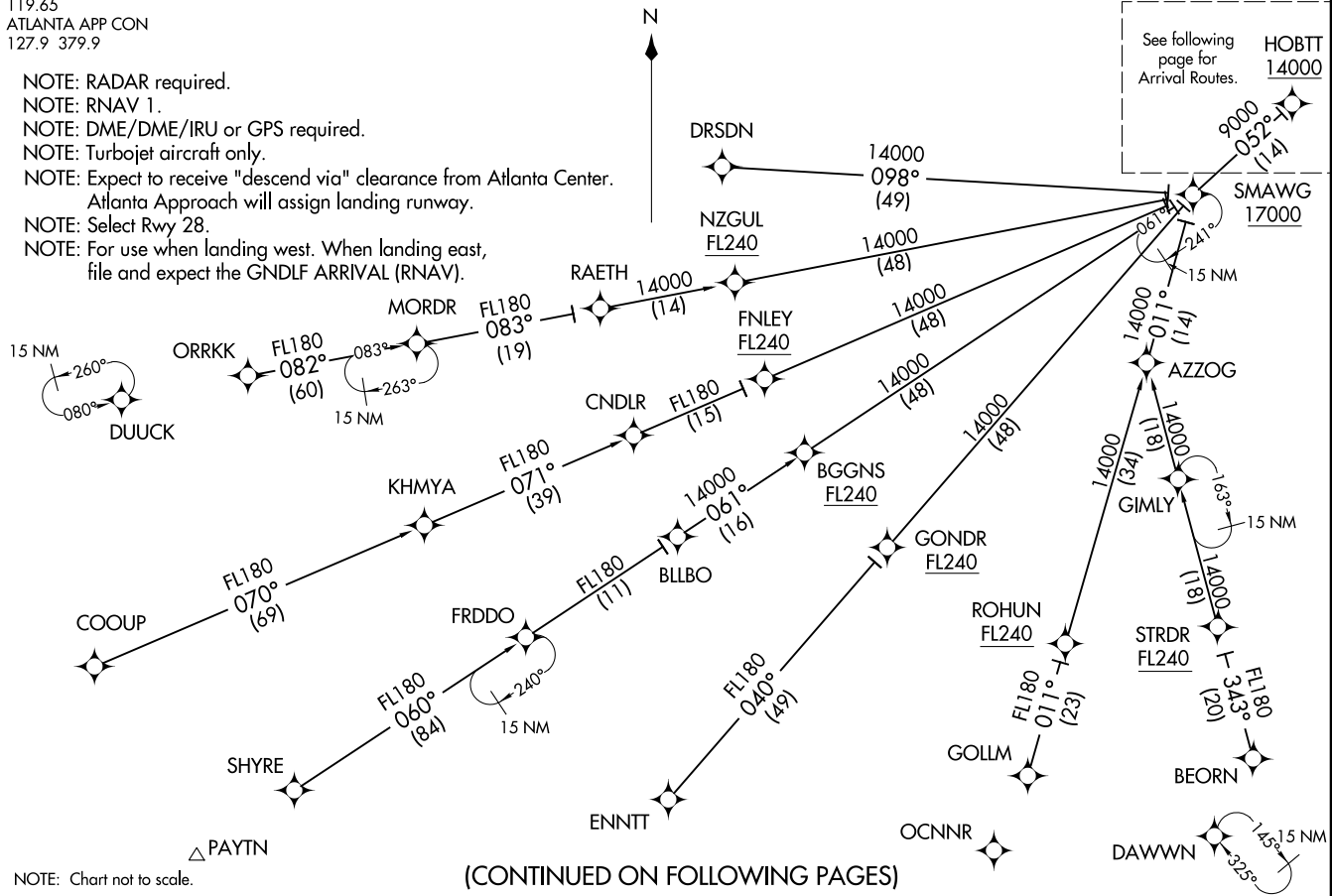


HOBTT TWO ARRIVAL(RNAV) Transition Routes
(HOBTT:HOBTT2) 01FEB18 ATLANTA, GEORGIA
HARTSFIELD/JACKSON ATLANTA INTL (ATL)

D-ATIS ARR
119.65
ATLANTA APP CON
127.9 379.9

- NOTE: RADAR required.
- NOTE: RNAV 1.
- NOTE: DME/DME/IRU or GPS required.
- NOTE: Turbojet aircraft only.
- NOTE: Expect to receive "descend via" clearance from Atlanta Center.
Atlanta Approach will assign landing runway.
- NOTE: Select Rwy 28.
- NOTE: For use when landing west. When landing east,
file and expect the GNDLF ARRIVAL (RNAV).



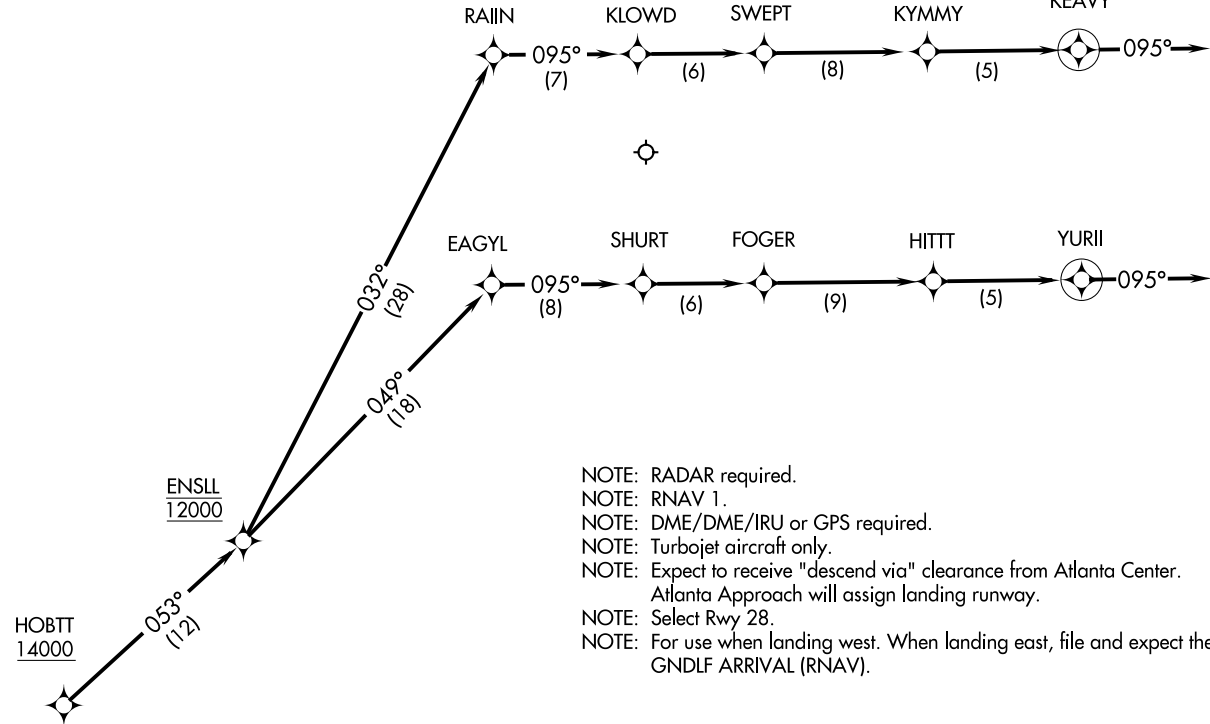
NOTE: Chart not to scale.

(CONTINUED ON FOLLOWING PAGES)

(HOBTT:HOBTT2) 24305 AL-26 (FAA)
HOBTT TWO ARRIVAL(RNAV) Transition Routes
HARTSFIELD/JACKSON ATLANTA INTL (ATL)
ATLANTA, GEORGIA

HOBTT TWO ARRIVAL(RNAV) Arrival Routes
 (HOBTT.HOBTT2) 01FEB18
 ATLANTA, GEORGIA
 HARTSFIELD/JACKSON ATLANTA INTL (ATL)

D-ATIS ARR
 119.65
 ATLANTA APP CON
 127.9 379.9



- NOTE: RADAR required.
- NOTE: RNAV 1.
- NOTE: DME/DME/IRU or GPS required.
- NOTE: Turbojet aircraft only.
- NOTE: Expect to receive "descend via" clearance from Atlanta Center. Atlanta Approach will assign landing runway.
- NOTE: Select Rwy 28.
- NOTE: For use when landing west. When landing east, file and expect the GNDLF ARRIVAL (RNAV).

NOTE: Chart not to scale.

(CONTINUED ON FOLLOWING PAGE)

(HOBTT.HOBTT2) 24305
 HOBTT TWO ARRIVAL(RNAV) Arrival Routes
 AL-26 (FAA)
 HARTSFIELD/JACKSON ATLANTA INTL (ATL)
 ATLANTA, GEORGIA

ARRIVAL ROUTE DESCRIPTION

BEORN TRANSITION (BEORN.HOBTT2)

COOUP TRANSITION (COOUP.HOBTT2): Assigned by ATC only.

DRSDN TRANSITION (DRSDN.HOBTT2)

ENNTT TRANSITION (ENNTT.HOBTT2)

FRDDO TRANSITION (FRDDO.HOBTT2)

GOLLM TRANSITION (GOLLM.HOBTT2)

KHMYA TRANSITION (KHMYA.HOBTT2): Assigned by ATC only.

ORRKK TRANSITION (ORRKK.HOBTT2)

SHYRE TRANSITION (SHYRE.HOBTT2)

STRDR TRANSITION (STRDR.HOBTT2)

From HOBTT on track 053° to cross ENSLL at 12000.

LANDING RWYS 26L/R: From ENSLL on track 032° to RAIIN, then on track 095° to KLOWD, then on track 095° to SWEPT, then on track 095° to KYMMY, then on track 095° to KEAVY, then on track 095°. Expect RADAR vectors to final approach course.

LANDING RWYS 27L/R, 28: From ENSLL on track 049° to EAGYL, then on track 095° to SHURT, then on track 095° to FOGER, then on track 095° to HITT, then on track 095° to YURII, then on track 095°. Expect RADAR vectors to final approach course.

LOST COMMUNICATIONS:

ASSIGNED RWY 28 OR RWY NOT ASSIGNED: Cross HOBTT at or above 14000; cross ENSLL at 12000; cross EAGYL at 12000; cross FOGER at or above 7000; cross YURII at 4000; after YURII turn left direct PRMAN and proceed on the ILS or RNAV RWY 28 approach.

ASSIGNED RWY 27L: Cross HOBTT at or above 14000; cross ENSLL at 12000; cross EAGYL at 12000; cross FOGER at or above 7000; cross YURII at 4000; after YURII turn left direct SLVAA and proceed on the ILS or RNAV RWY 27L approach.

ASSIGNED RWY 27R: Cross HOBTT at or above 14000; cross ENSLL at 12000; cross EAGYL at 12000; cross FOGER at or above 7000; cross YURII at 4000; after YURII turn left direct YOUYU and proceed on the ILS or RNAV RWY 27R approach.

ASSIGNED RWY 26L: Cross HOBTT at or above 14000; cross ENSLL at 12000; cross RAIIN at 12000; cross SWEPT at or above 7000; cross KEAVY at 5000; after KEAVY turn right direct JIRRI and proceed on the ILS or RNAV RWY 26L approach.

ASSIGNED RWY 26R: Cross HOBTT at or above 14000; cross ENSLL at 12000; cross RAIIN at 12000; cross SWEPT at or above 7000; cross KEAVY at 5000; after KEAVY turn right direct ZELOW and proceed on the ILS or RNAV RWY 26R approach.