

ATLANTA, GEORGIA

AL-26 (FAA)

24305

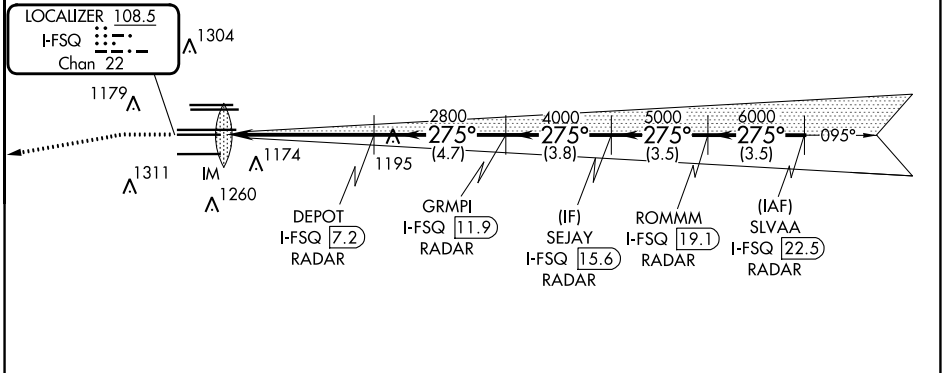
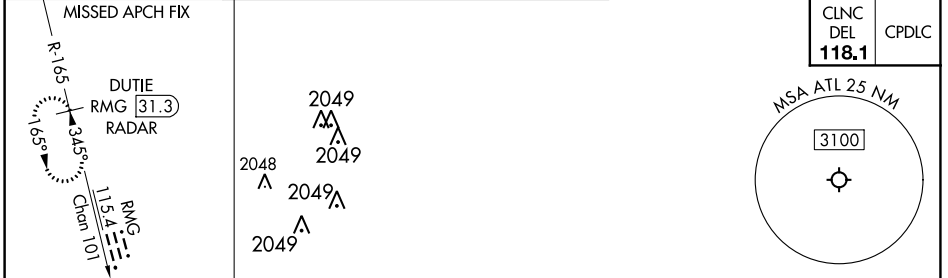
LOC/DME I-FSQ 108.5 Chan 22	APP CRS 275°	Rwy ldg TDZE Apt Elev	8865 999 1026
--	------------------------	-----------------------------	--

ILS RWY 27L (SA CAT I)

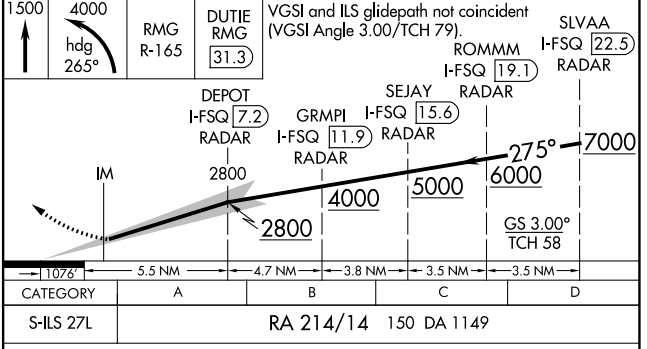
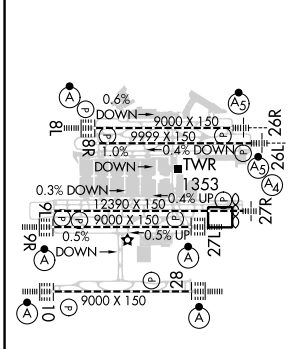
HARTSFIELD/JACKSON ATLANTA INTL (ATL)

DME or RADAR required. RADAR required for procedure entry.	ALSF-2	MISSED APPROACH: Climb to 1500 then climbing left turn to 4000 on heading 265° and RMG VORTAC R-165 to DUTIE/RMG 31.3 DME/RADAR and hold.
Simultaneous approach authorized. Requires specific OPSPEC, MSPEC, or LOA approval.		

D-ATIS ARR 119.65	ATLANTA APP CON DEP 127.9 379.9	ATLANTA TOWER 8L-26R 8R-26L 9L-27R 9R-27L 10-28 RWYs 119.1 125.325 123.85 119.3 119.5 254.4	ALL RWYs 121.9	GND CON (8L-26R, 8R-26L) (9L-27R, 9R-27L) 10-28 RWYs 121.75 121.65 254.4	ALL RWYs
-----------------------------	--	--	-----------------------------	---	-------------



ELEV 1026	D	TDZE 999
-----------	----------	----------



SA CATEGORY I ILS- SPECIAL AIRCREW & AIRCRAFT CERTIFICATION REQUIRED

ATLANTA, GEORGIA
Amdt 19 22APR21

HARTSFIELD/JACKSON ATLANTA INTL (ATL)
33°38'N-84°26'W
ILS RWY 27L (SA CAT I)

SE-4, 26 DEC 2024 to 23 JAN 2025

SE-4, 26 DEC 2024 to 23 JAN 2025