

ATLANTA, GEORGIA

AL-26 (FAA)

24305

LOC/DME I-PKU 111.75 Chan 54(Y)	APP CRS 275°	Rwy ldg TDZE Apt Elev 9000 998 1026
---	------------------------	---

ILS RWY 28 (SA CAT I)

HARTSFIELD/JACKSON ATLANTA INTL (ATL)

RNAV 1-GPS or RADAR required for procedure entry.
From TERII: RNAV 1-GPS required. DME or RADAR required.

ALSIF-2

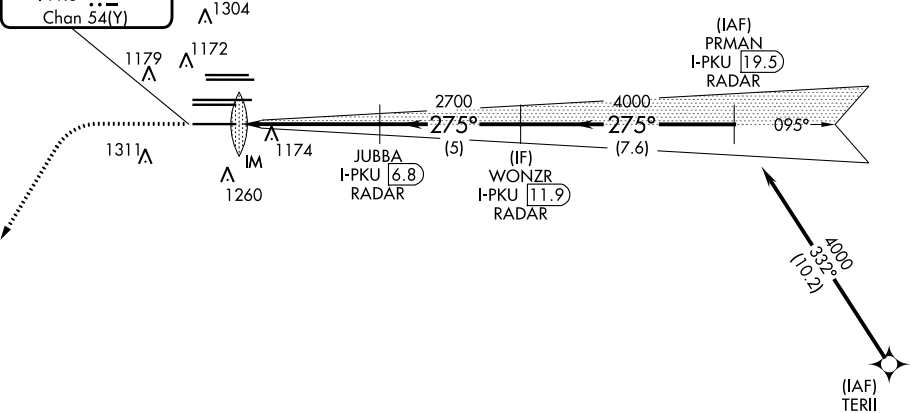
MISSED APPROACH: Climb to 1500 then climbing left turn to 3000 on heading 216° and LGC VORTAC R-062 to PAJVO/LGC 28 DME/RADAR and hold.

Simultaneous approach authorized.
Requires specific OPSPEC, MSPEC, or LOA approval.

D-ATIS ARR 119.65	ATLANTA APP CON APP 127.9 379.9	ATLANTA TOWER 8L-26R 8R-26L 9L-27R 9R-27L 10-28 RWYS				ALL RWYS 119.3 119.5 254.4	GND CON 10-28 RWYS 121.9 121.75 121.65 254.4	ALL RWYS
-----------------------------	---	---	--	--	--	--------------------------------------	---	----------

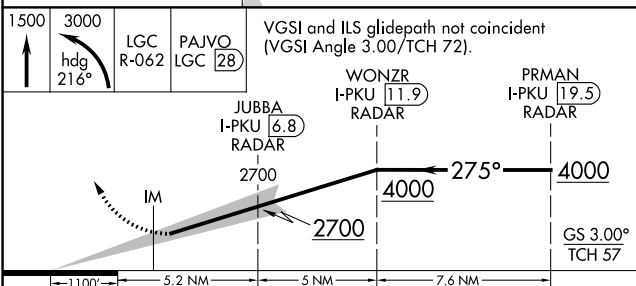
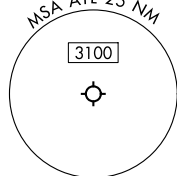
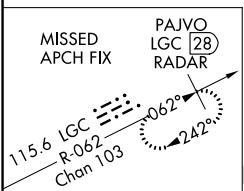
Δ 2049 Δ 2049							CLNC DEL 118.1	CPDLC
--------------------------------	--	--	--	--	--	--	-----------------------------	-------

LOCALIZER 111.75
I-PKU
Chan 54(Y)

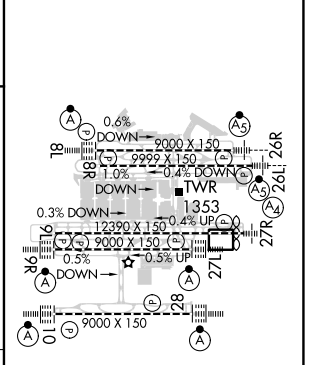


SE-4, 26 DEC 2024 to 23 JAN 2025

SE-4, 26 DEC 2024 to 23 JAN 2025



ELEV 1026	D TDZE 998
-----------	-------------------



CATEGORY	A	B	C	D
S-ILS 28	RA 264/14		150 DA 1148	

SA CATEGORY I ILS - SPECIAL AIRCREW & AIRCRAFT CERTIFICATION REQUIRED

HIRL all Rwys
TDZ/CL Rwys 8L, 9R, 10, 26R, 27L and 28

ATLANTA, GEORGIA
Amdt 5 07OCT21

33°38'N-84°26'W

HARTSFIELD/JACKSON ATLANTA INTL (ATL)
ILS RWY 28 (SA CAT I)