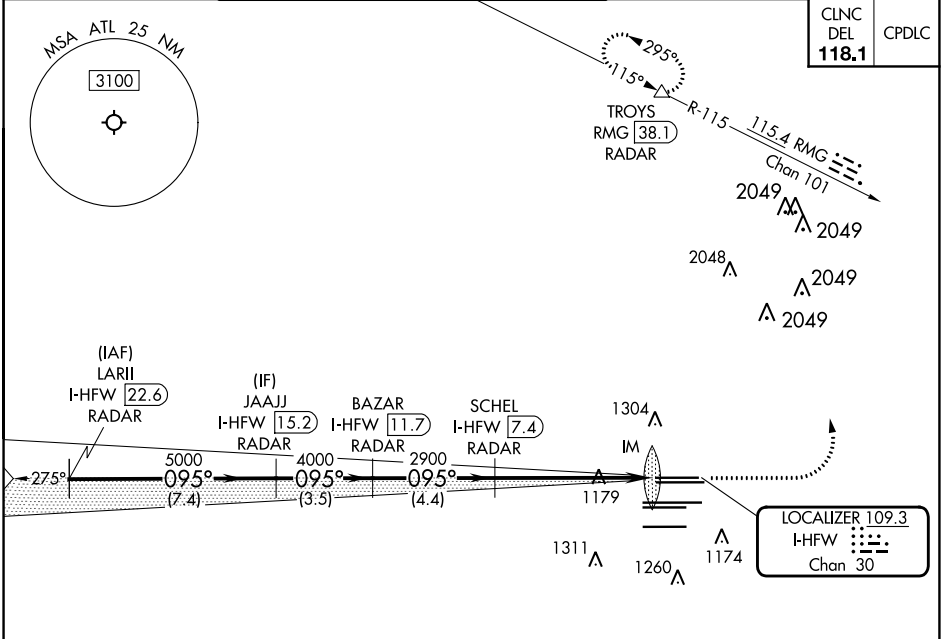


|   |                        |   |
|---|------------------------|---|
| LOC/DME I-HFW<br><b>109.3</b><br>Chan <b>30</b> | APP CRS<br><b>095°</b> | Rwy Idg <b>8800</b><br>TDZE <b>1015</b><br>Apt Elev <b>1026</b> |
|---|------------------------|---|

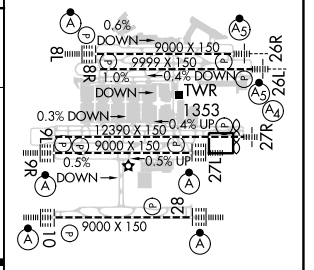
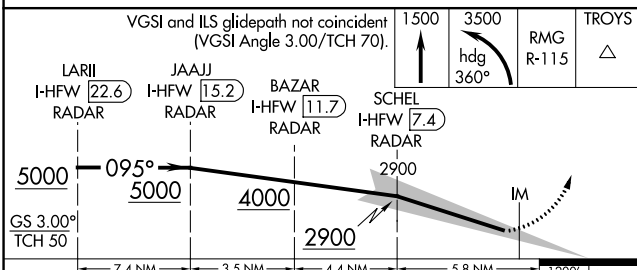
**ILS RWY 8L (SA CAT I)**  
HARTSFIELD/JACKSON ATLANTA INTL (ATL)

|  |  |  |   |  |             |
|--|--|--|---|--|-------------|
| RADAR required for procedure entry. DME or RADAR required.                             |  | ALSIF-2  | MISSED APPROACH: Climb to 1500 then climbing left turn to 3500 on heading 360° and RMG VORTAC R-115 to TROYS/RMG 38.1 DME/RADAR and hold. |  |             |
| Simultaneous approach authorized.<br>Requires specific OPSPEC, MSPEC, or LOA approval. |  |  |   |  |             |
| D-ATIS<br>ARR <b>119.65</b><br>DEP <b>125.55</b>                                       | ATLANTA<br>APP CON<br><b>127.9 379.9</b> | ATLANTA TOWER<br>8L-26R 8R-26L 9L-27R 9R-27L 10-28 RWYS<br><b>119.1 125.325 123.85 119.3 119.5 254.4</b> | ALL<br>RWYS<br><b>121.9</b>   | GND CON<br>(8L-26R,8R-26L) (9L-27R,9R-27L) 10-28<br><b>121.75 121.65 254.4</b> | ALL<br>RWYS |



|              |       |
|--------------|-------|
| CLNC DEL     | CPDLC |
| <b>118.1</b> |       |

|           |          |           |
|-----------|----------|-----------|
| ELEV 1026 | <b>D</b> | TDZE 1015 |
|-----------|----------|-----------|



|          |                       |   |   |   |
|----------|-----------------------|---|---|---|
| CATEGORY | A                     | B | C | D |
| S-ILS 8L | RA 147/14 150 DA 1165 |   |   |   |

**SA CATEGORY I ILS - SPECIAL AIRCREW & AIRCRAFT CERTIFICATION REQUIRED**

HIRL all Rwws  
TDZ/CL Rwws 8L, 9R,  
10, 26R, 27L and 28

SE-4, 26 DEC 2024 to 23 JAN 2025

SE-4, 26 DEC 2024 to 23 JAN 2025