

ATLANTA, GEORGIA

AL-26 (FAA)

24305

LOC/DME I-FUN 108.9 Chan 26	APP CRS 095°	Rwy Idg TDZE Apt Elev 9000 1026 1026
---	------------------------	--

ILS RWY 9R (CAT II & III)

HARTSFIELD/JACKSON ATLANTA INTL (ATL)

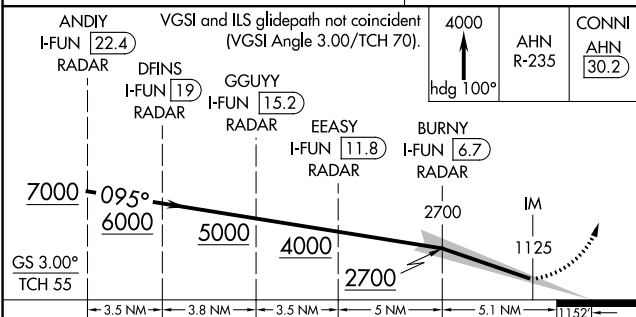
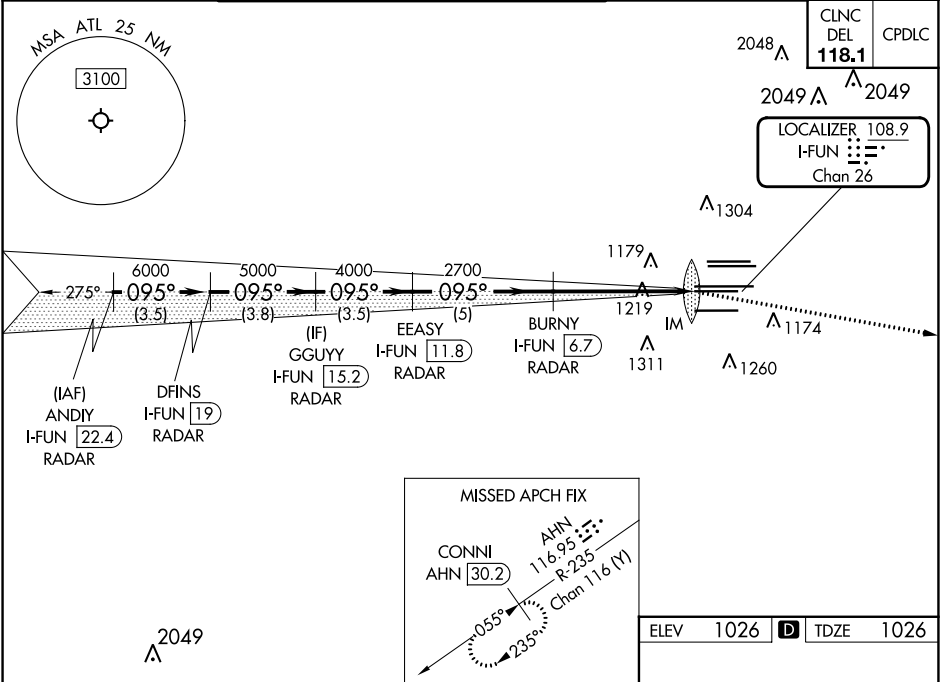
RADAR required for procedure entry, DME.

Simultaneous approach authorized.

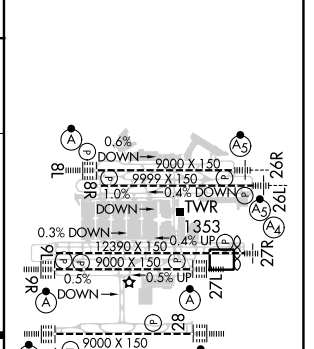
ALSF-2

MISSED APPROACH: Climb to 4000 on heading 100° and AHN VOR/DME R-235 to CONNI/AHN 30.2 DME and hold.

D-ATIS ARR 119.65	ATLANTA APP CON 127.9 379.9	ATLANTA TOWER 8L-26R 8R-26L 9L-27R 9R-27L 10-28 RWYS				ALL RWYS 121.9	GND CON 121.75	ALL RWYS 121.65 254.4
DEP 125.55		119.1 125.325 123.85 119.3 119.5 254.4						



ELEV	1026	D	TDZE	1026
------	------	---	------	------



CATEGORY	A	B	C	D
S-ILS 9R	CAT II RA 118/12 100 DA 1126			
S-ILS 9R	CAT III RVR 03			

CATEGORY II & III ILS - SPECIAL AIRCREW & AIRCRAFT CERTIFICATION REQUIRED



ATLANTA, GEORGIA
Amdt 20 22APR21

33°38'N-84°26'W

ILS RWY 9R (CAT II & III)

HIRL all Rwy's
TDZ/CL Rwy's 8L,
9R, 10, 26R, 27L and 28

SE-4, 26 DEC 2024 to 23 JAN 2025

SE-4, 26 DEC 2024 to 23 JAN 2025