

LOC/DME I-FUN 108.9 Chan 26	APP CRS 095°	Rwy Idg TDZE Apt Elev 9000 1026 1026
---	------------------------	--

ILS RWY 9R (SA CAT I)
HARTSFIELD/JACKSON ATLANTA INTL (ATL)

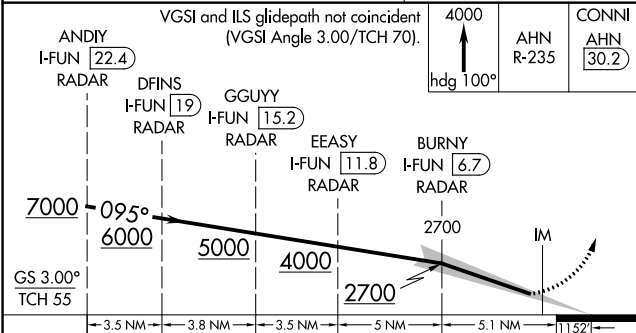
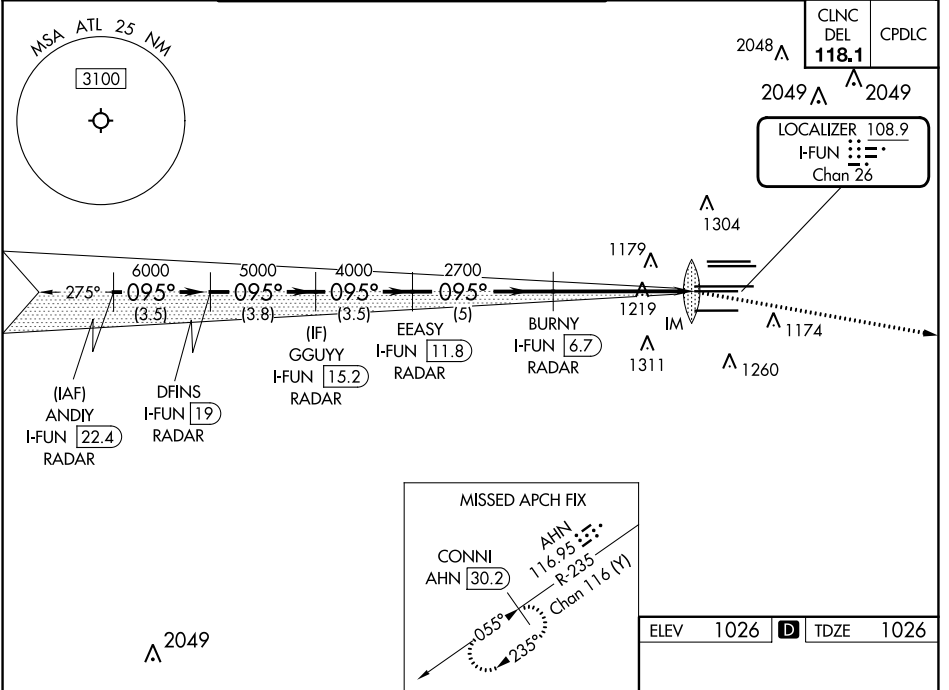
RADAR required for procedure entry, DME.

Simultaneous approach authorized.
Requires specific OPSPEC, MSPEC, or LOA approval.

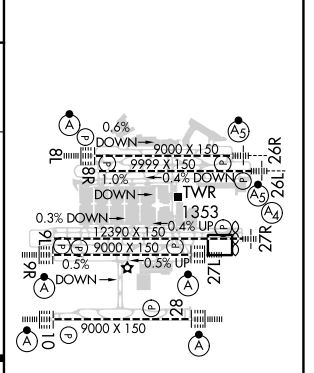
ALSF-2

MISSED APPROACH: Climb to 4000 on heading 100° and AHN VOR/DME R-235 to CONNI/AHN 30.2 DME and hold.

D-ATIS ARR 119.65	ATLANTA APP CON 127.9 379.9	ATLANTA TOWER 8L-26R 8R-26L 9L-27R 9R-27L 10-28 RWYS				ALL RWYS 121.9	GND CON (8L-26R,8R-26L) (9L-27R,9R-27L) 10-28 121.75	ALL RWYS 121.65	254.4		
DEP 125.55	127.9 379.9	119.1	125.325	123.85	119.3	119.5	254.4	121.9	121.75	121.65	254.4



ELEV	1026	TDZE	1026
------	------	------	------



SA CATEGORY I ILS - SPECIAL AIRCREW & AIRCRAFT CERTIFICATION REQUIRED

HIRL all Rwy's
TDZ/CL Rwy's 8L,
9R, 10, 26R, 27L and 28

SE-4, 26 DEC 2024 to 23 JAN 2025

SE-4, 26 DEC 2024 to 23 JAN 2025