

LOC/DME I-OMO <b>111.55</b>	APP CRS <b>095°</b>	Rwy Idg <b>9000</b>
Chan <b>52 (Y)</b>		TDZE <b>1000</b>
		Apt Elev <b>1026</b>

# ILS or LOC RWY 10

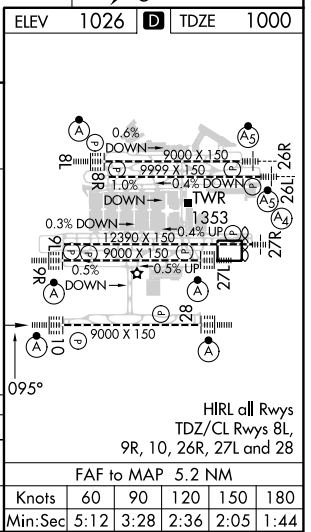
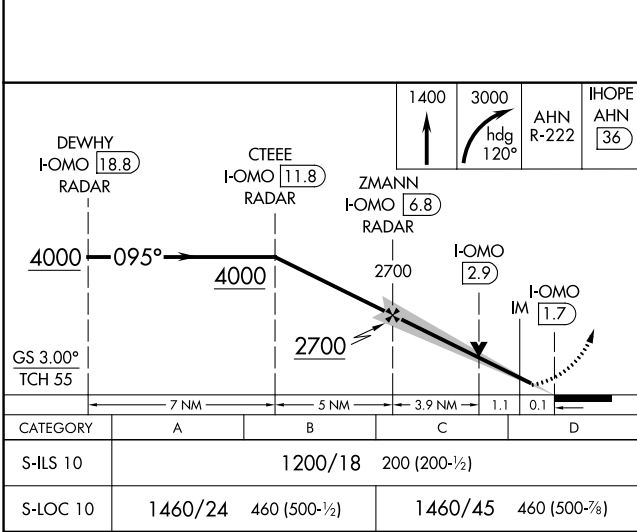
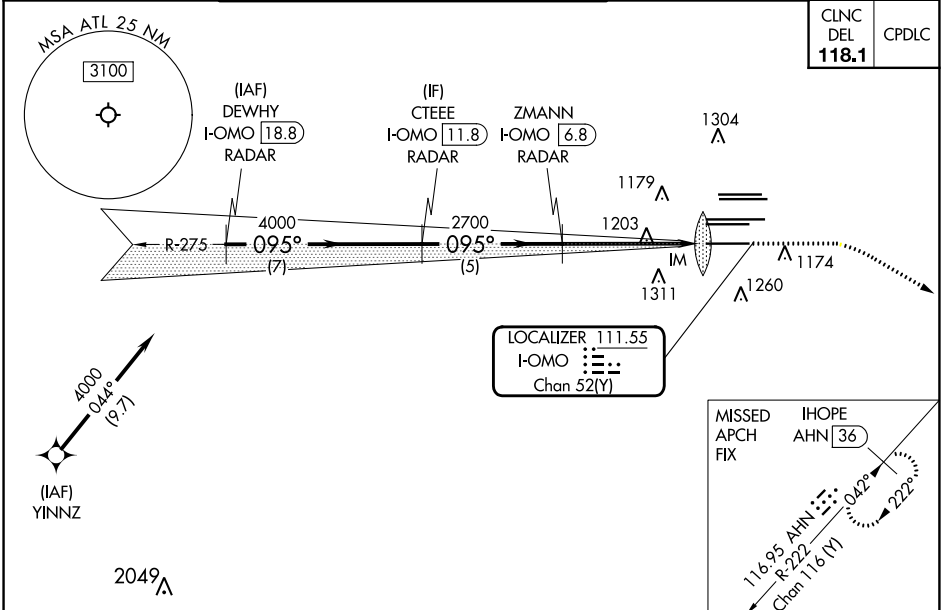
HARTSFIELD/JACKSON ATLANTA INTL (ATL)

DME or RADAR required. RNP APCH - GPS from YINNZ.

ALSF-2

MISSED APPROACH: Climb to 1400 then dimbing right turn to 3000 on heading 120° and AHN R-222 to IHOPE/AHN 36 DME and hold.

D-ATIS ARR <b>119.65</b>	ATLANTA APP CON <b>127.9 379.9</b>	ATLANTA TOWER 8L-26R 8R-26L 9L-27R 9R-27L 10-28 RWYs				ALL RWYs (8L-26R,8R-26L) (9L-27R,9R-27L) 10-28	GND CON RWYs <b>121.9 121.75 121.65 254.4</b>
DEP <b>125.55</b>	<b>127.9 379.9</b>	<b>119.1 125.325 123.85 119.3 119.5 254.4</b>					



SE-4, 26 DEC 2024 to 23 JAN 2025

SE-4, 26 DEC 2024 to 23 JAN 2025