

ATLANTA, GEORGIA

AL-26 (FAA)

24305

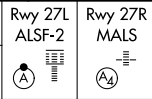
LOC/DME I-FSQ 108.5 Chan 22	APP CRS 275°	Rwy ldg 27L 8865 27R 11890 TDZE 999 985 Apt Elev 1026 1026
--	------------------------	--

ILS or LOC RWY 27L

HARTSFIELD/JACKSON ATLANTA INTL (ATL)

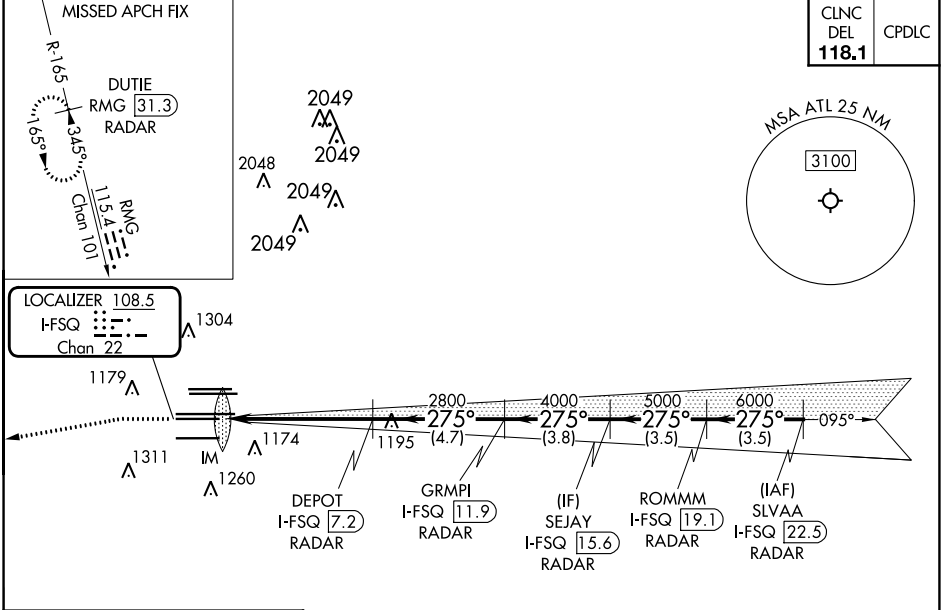
DME or RADAR required.
RADAR required for procedure entry.

⚠ Simultaneous approach authorized.
⚠ Inop table does not apply to Sidestep Rwy 27R.

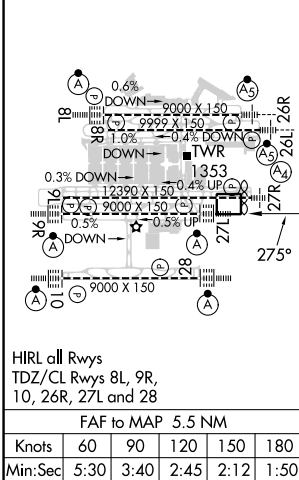


MISSED APPROACH: Climb to 1500 then climbing left turn to 4000 on heading 265° and R/MG VORTAC R-165 to DUTIE/RMG 31.3 DME/RADAR and hold.

D-ATIS ARR 119.65	ATLANTA APP CON DEP 127.9 379.9	ATLANTA TOWER 8L-26R 119.1 8R-26L 125.325 9L-27R 123.85 9R-27L 119.3 10-28 RWYS 119.5 254.4	ALL RWYS 121.9	GND CON 121.75	ALL RWYS 121.65 254.4
-----------------------------	--	--	--------------------------	-------------------	--



ELEV 1026	TDZE 27L 999	TDZE 27R 985
-----------	--------------	--------------



ATLANTA, GEORGIA
Amdt 19 22APR21

HARTSFIELD/JACKSON ATLANTA INTL (ATL)
33°38'N-84°26'W
ILS or LOC RWY 27L

SE-4, 26 DEC 2024 to 23 JAN 2025

SE-4, 26 DEC 2024 to 23 JAN 2025