

ATLANTA, GEORGIA

AL-26 (FAA)

24305

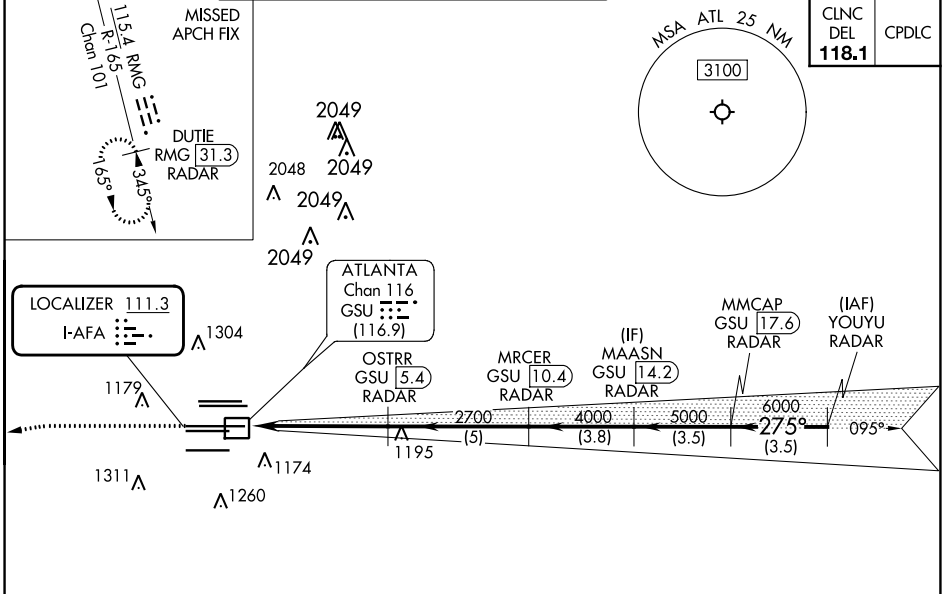
LOC I-AFA	APP CRS	Rwy Idg	27R	27L
111.3	275°	11890	8865	
		TDZE	985	999
		Apt Elev	1026	1026

ILS or LOC RWY 27R

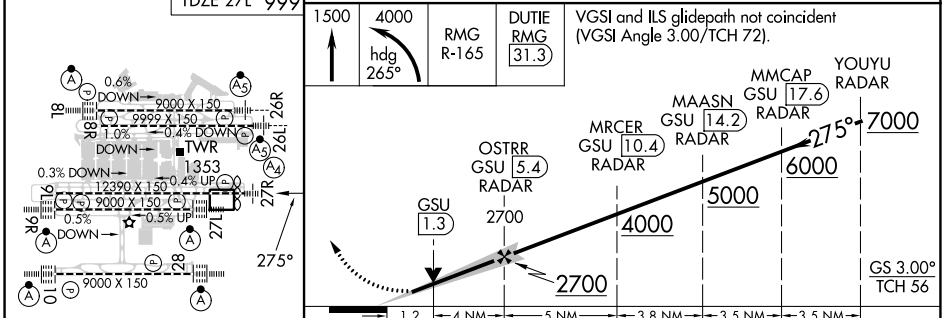
HARTSFIELD/JACKSON ATLANTA INTL (ATL)

DME and RADAR required.		Rwy 27R MALS	Rwy 27L ALSF-2	MISSED APPROACH: Climb to 1500 then climbing left turn to 4000 on heading 265° and RMG VORTAC R-165 to DUTIE/RMG 31.3 DME/RADAR and hold.
<p>Simultaneous approach authorized. Inop table does not apply to S-ILS 27R all Cats. DME from GSU DME. DME use requires simultaneous reception of I-AFA and GSU DME.</p>				

D-ATIS	ATLANTA	ATLANTA TOWER					ALL	GND CON	ALL			
ARR 119.65	APP CON	8L-26R	8R-26L	9L-27R	9R-27L	10-28	RWYS	(8L-26R,8R-26L)	(9L-27R,9R-27L)	10-28	RWYS	
DEP 125.55	127.9	379.9	119.1	125.325	123.85	119.3	119.5	254.4	121.9	121.75	121.65	254.4



ELEV 1026	D	TDZE 27R 985	TDZE 27L 999
-----------	----------	--------------	--------------



CATEGORY	A	B	C	D
S-ILS 27R	1185/40		200 (200-¾)	
S-LOC 27R	1420/40	435 (400-¾)	1420/50	435 (400-1)
SIDESTEP 27L	1420/55 421 (400-1)			1420-1½ 421 (400-1½)

ATLANTA, GEORGIA
Amdt 8 20APR23

HARTSFIELD/JACKSON ATLANTA INTL (ATL)
33°38'N-84°26'W

ILS or LOC RWY 27R

SE-4, 26 DEC 2024 to 23 JAN 2025

SE-4, 26 DEC 2024 to 23 JAN 2025