

ATLANTA, GEORGIA

AL-26 (FAA)

24305

LOC/DME I-FUN 108.9 Chan 26	APP CRS 095°	Rwy Idg 9R 9000 11730 1026 1019 Apt Elev 1026 1026
---	------------------------	--

ILS or LOC RWY 9R

HARTSFIELD/JACKSON ATLANTA INTL (ATL)

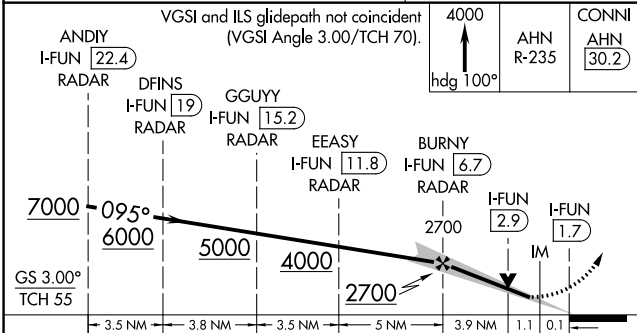
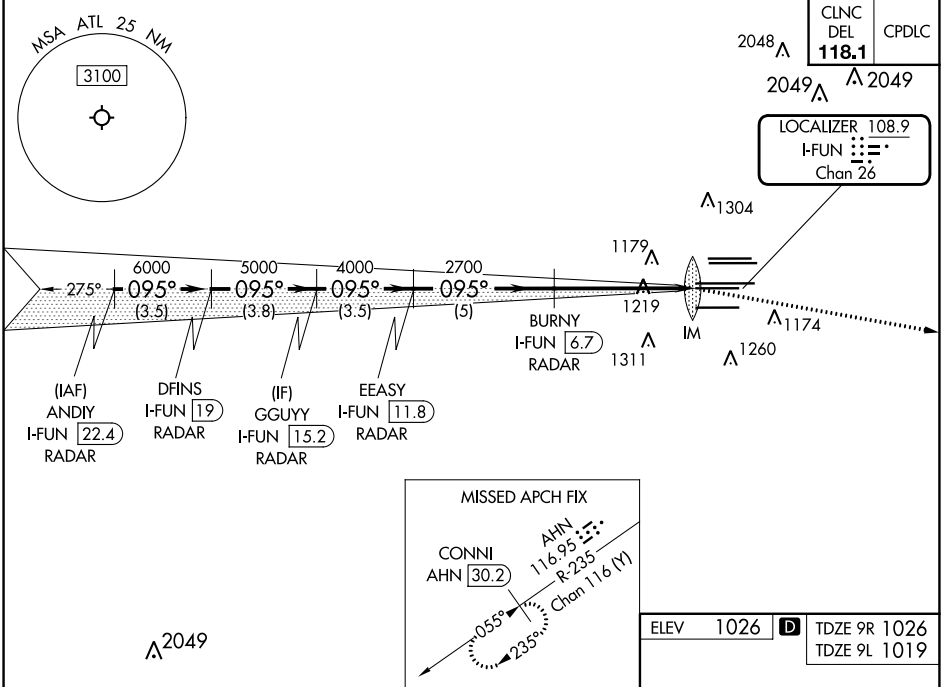
RADAR required for procedure entry, DME.

Simultaneous approach authorized.
Inop table does not apply to sidestep Rwy 9L.

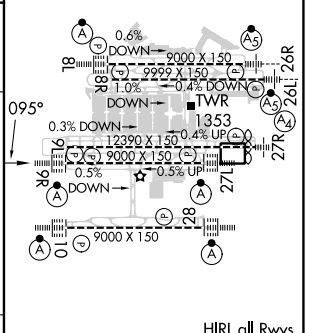
Rwy 9R
ALSF-2

MISSED APPROACH: Climb to 4000 on heading 100° and AHN VOR/DME R-235 to CONNI/AHN 30.2 DME and hold.

D-ATIS ARR 119.65	ATLANTA APP CON 127.9 379.9	ATLANTA TOWER				ALL RWYS	GND CON	ALL RWYS
DEP 125.55	127.9 379.9	8L-26R	8R-26L	9L-27R	9R-27L	10-28 RWYS	(8L-26R, 8R-26L) (9L-27R, 9R-27L)	10-28 RWYS
		119.1 125.325	123.85	119.3 119.5	254.4	121.9	121.75	121.65 254.4



ELEV	1026	TDZE 9R	1026
		TDZE 9L	1019



CATEGORY	A	B	C	D
S-ILS 9R	1226/18		200 (200-1/2)	
S-LOC 9R	1480/24	454 (500-1/2)	1480/45	454 (500-3/4)
SIDESTEP 9L	1480/55	461 (500-1)	1480-1/2 461 (500-1/2)	1480-2 461 (500-2)

HIRL all Rwy's
TDZ/CL Rwy's 8L,
9R, 10, 26R, 27L and 28

FAF to MAP 5.1 NM

Knots	60	90	120	150	180
Min:Sec	5:06	3:24	2:33	2:02	1:42

ATLANTA, GEORGIA
Amdt 20 22APR21

33°38'N-84°26'W

HARTSFIELD/JACKSON ATLANTA INTL (ATL)

ILS or LOC RWY 9R

SE-4, 26 DEC 2024 to 23 JAN 2025

SE-4, 26 DEC 2024 to 23 JAN 2025