

ATLANTA, GEORGIA

AL-26 (FAA)

24305

ILS PRM RWY 9R (SA CAT I)


(CLOSE PARALLEL)

HARTSFIELD/JACKSON ATLANTA INTL (ATL)

LOC/DME I-FUN 108.9 Chan 26	APP CRS 095°	Rwy Idg 9000 TDZE 1026 Apt Elev 1026
---	------------------------	---

RADAR required for procedure entry, DME.

Requires specific OPSPEC, MSPEC, or LOA approval. Simultaneous approach authorized. Use of FD or AP required during simultaneous operations. Dual VHF comm required. See additional requirements on AAUP.

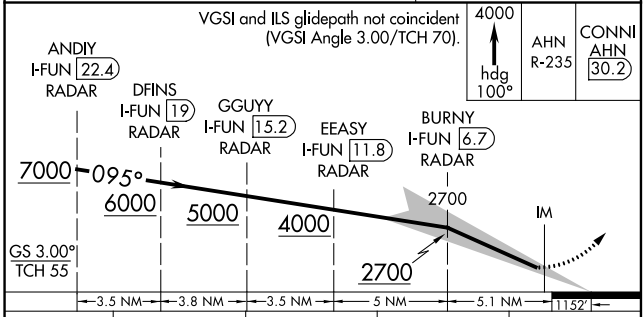
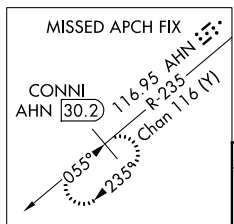
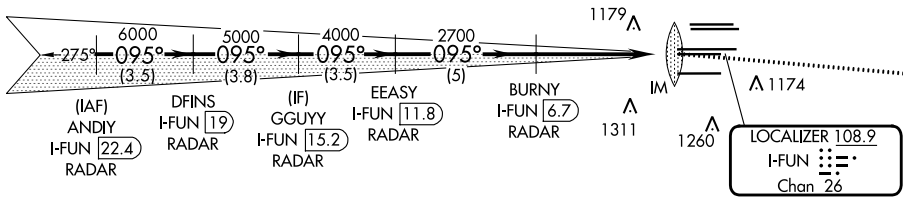
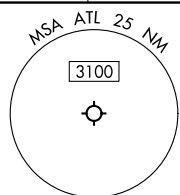
ALSIF-2 

MISSED APPROACH: Climb to 4000 on heading 100° and AHN VOR/DME R-235 to CONNI/AHN 30.2 DME and hold.

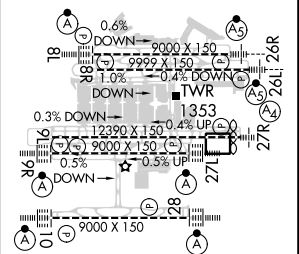
D-ATIS ARR 119.65 DEP 125.55	ATLANTA APP CON 127.9 379.9	ATLANTA TOWER 8L-26R 8R-26L 9L-27R 9R-27L 10-28 RWYS 119.1 125.325 123.85 119.3 119.5 254.4 PRM 132.55	ALL RWYS 121.9 121.75 121.65 254.4
--	---------------------------------------	---	--

GND CON 121.9	ALL RWYS 121.75 121.65 254.4
-------------------------	--

Δ 2048	CLNC DEL 118.1	CPDLC
---------------	-----------------------	-------



ELEV 1026	D TDZE 1026
-----------	--------------------



CATEGORY	A	B	C	D
5-ILS 9R	RA 196/14 150 DA 1176			

SA CATEGORY I ILS - SPECIAL AIRCREW & AIRCRAFT CERTIFICATION REQUIRED

HIRL all Rwws
TDZ/CL Rwws 8L, 9R, 10, 26R, 27L and 28

SE-4, 26 DEC 2024 to 23 JAN 2025

SE-4, 26 DEC 2024 to 23 JAN 2025

ATLANTA, GEORGIA
Amdt 3 22APR21

33°38'N-84°26'W

HARTSFIELD/JACKSON ATLANTA INTL (ATL)

ILS PRM RWY 9R (SA CAT I)(CLOSE PARALLEL)