

RNAV 1 - DME/DME/IRU or GPS.
RADAR required.

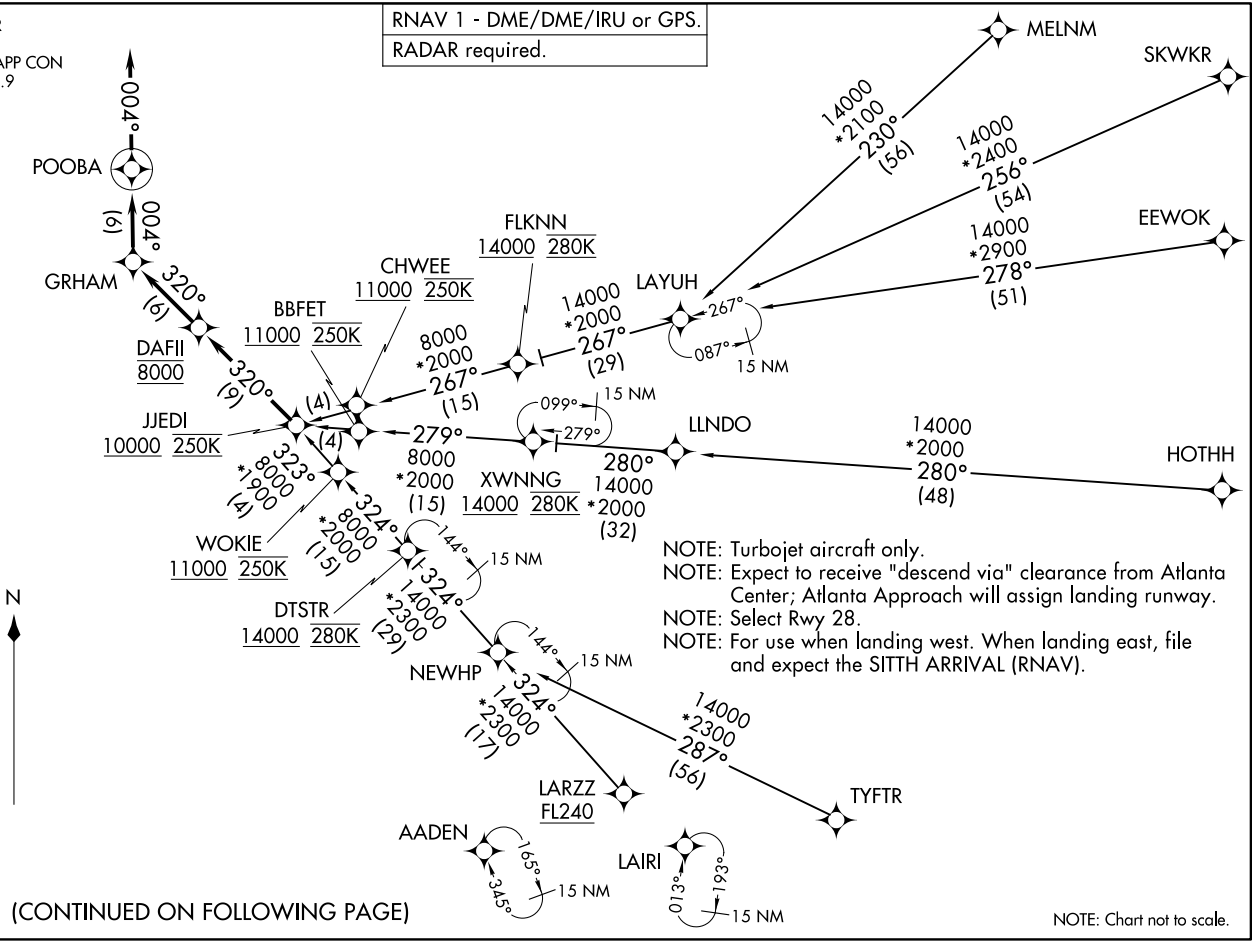
D-ATIS ARR
119.65
ATLANTA APP CON
127.9 379.9

JJEDI THREE ARRIVAL (RNAV)
(JJEDI, JJEDI3) 08SEP22

HARTSFIELD/JACKSON ATLANTA INTL (ATL)
ATLANTA, GEORGIA

JJEDI THREE ARRIVAL (RNAV)
(JJEDI, JJEDI3) 24305

AT-26 (FAA) HARTSFIELD/JACKSON ATLANTA INTL (ATL)
ATLANTA, GEORGIA



NOTE: Turbojet aircraft only.
 NOTE: Expect to receive "descend via" clearance from Atlanta Center; Atlanta Approach will assign landing runway.
 NOTE: Select Rwy 28.
 NOTE: For use when landing west. When landing east, file and expect the SITTH ARRIVAL (RNAV).

(CONTINUED ON FOLLOWING PAGE)

NOTE: Chart not to scale.

ARRIVAL ROUTE DESCRIPTION

EEWOK TRANSITION (EEWOK.JJEDI3)

HOTHH TRANSITION (HOTHH.JJEDI3)

LARZZ TRANSITION (LARZZ.JJEDI3)

LAYUH TRANSITION (LAYUH.JJEDI3)

MELNM TRANSITION (MELNM.JJEDI3): Assigned by ATC only.

SKWKR TRANSITION (SKWKR.JJEDI3)

TYFTR TRANSITION (TYFTR.JJEDI3)

From JJEDI on track 320° to cross DAFII at 8000, then on track 320° to GRHAM, then on track 004° to POOBA, then on track 004°. Expect RADAR vectors to final approach course.

LOST COMMUNICATIONS:

ASSIGNED RUNWAY 28 OR RUNWAY NOT ASSIGNED: Cross JJEDI at or above 10000; cross DAFII at 8000; cross POOBA at 5000; after POOBA descend to 3000 and proceed direct PRMAN; proceed on the ILS or RNAV RWY 28 approach.

ASSIGNED RUNWAY 27L: Cross JJEDI at or above 10000; cross DAFII at 8000; cross POOBA at 6000; after POOBA proceed direct SLVAA and proceed on the ILS or RNAV RWY 27L approach.

ASSIGNED RUNWAY 27R: Cross JJEDI at or above 10000; cross DAFII at 8000; cross POOBA at 6000; after POOBA proceed direct YOUYU and proceed on the ILS or RNAV RWY 27R approach.

ASSIGNED RUNWAY 26L: Cross JJEDI at or above 10000; cross DAFII at 8000; cross POOBA at 6000; after POOBA proceed direct JIRRI and proceed on the ILS or RNAV RWY 26L approach.

ASSIGNED RUNWAY 26R: Cross JJEDI at or above 10000; cross DAFII at 8000; cross POOBA at 6000; after POOBA proceed direct ZELOW and proceed on the ILS or RNAV RWY 26R approach.

SE-4, 26 DEC 2024 to 23 JAN 2025

SE-4, 26 DEC 2024 to 23 JAN 2025