

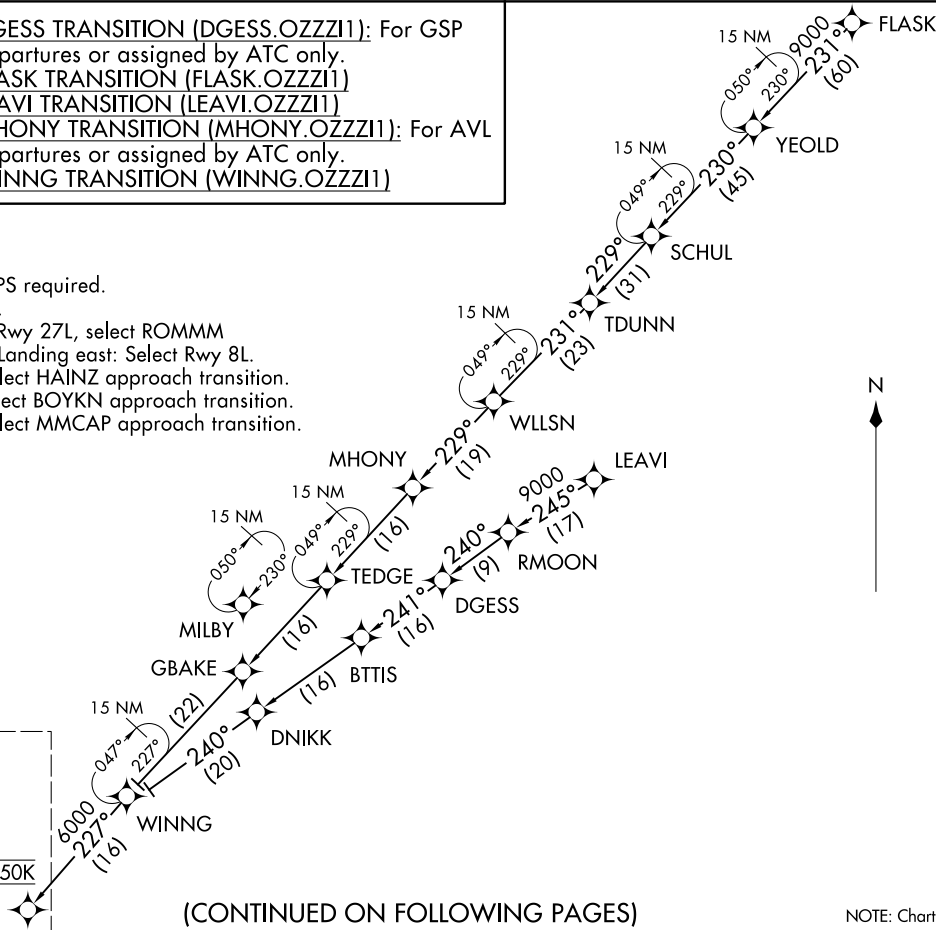
D-ATIS ARR  
119.65  
ATLANTA APP CON  
128.525 379.9

DGESS TRANSITION (DGESS.OZZI1): For GSP  
departures or assigned by ATC only.  
FLASK TRANSITION (FLASK.OZZI1)  
LEAVI TRANSITION (LEAVI.OZZI1)  
MHONY TRANSITION (MHONY.OZZI1): For AVL  
departures or assigned by ATC only.  
WINNG TRANSITION (WINNG.OZZI1)

- NOTE: RADAR required.
- NOTE: RNAV 1.
- NOTE: DME/DME/IRU or GPS required.
- NOTE: Turbojet aircraft only.
- NOTE: Landing west: Select Rwy 27L, select ROMMM approach transition; Landing east: Select Rwy 8L.
- NOTE: Landing Rwy 26R: Select HAINZ approach transition.
- NOTE: Landing Rwy 26L: Select BOYKN approach transition.
- NOTE: Landing Rwy 27R: Select MMCAP approach transition.

See following page  
for Arrival Routes.

OZZI  
Landing East: Expect 14000  
Landing West: Expect 12000 and 250K



(CONTINUED ON FOLLOWING PAGES)

NOTE: Chart not to scale.

OZZI ONE ARRIVAL (RNAV) Transition Routes  
ATLANTA, GEORGIA  
HARTSFIELD/JACKSON ATLANTA INTL (ATL)  
120CT17

OZZI ONE ARRIVAL (RNAV) Transition Routes  
ATLANTA, GEORGIA  
ATL-26 (FAA) HARTSFIELD/JACKSON ATLANTA INTL (ATL)  
24305

D-ATIS ARR  
119.65  
ATLANTA APP CON  
128.525 379.9

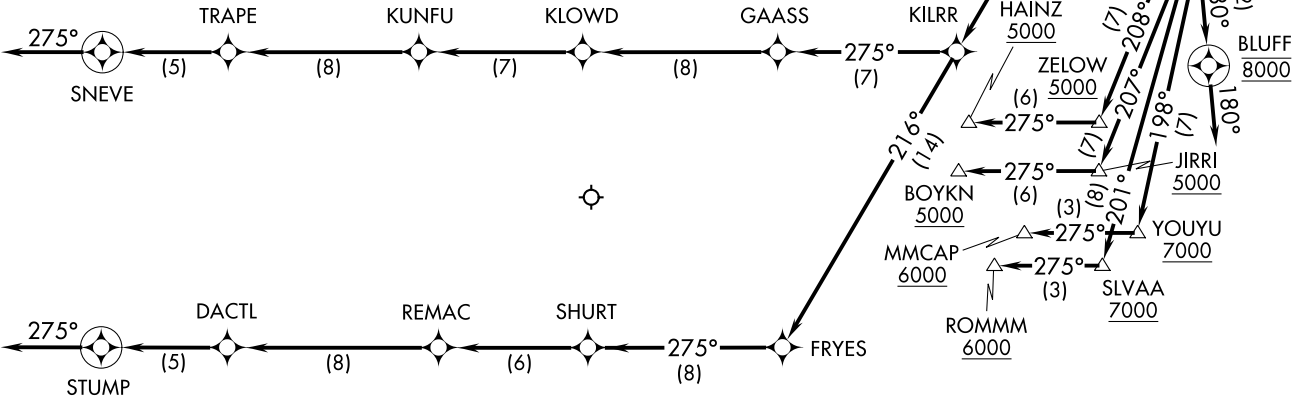
OZZI ONE ARRIVAL (RNAV)  
(OZZI, OZZI1) 120CT17

Arrival Routes

HARTSFIELD/JACKSON ATLANTA INTL (ATL)  
ATLANTA, GEORGIA



- NOTE: RADAR required.
- NOTE: RNAV 1.
- NOTE: DME/DME/IRU or GPS required.
- NOTE: Turbojet aircraft only.
- NOTE: Landing west: Select Rwy 27L, select ROMMM approach transition; Landing east: Select Rwy 8L.
- NOTE: Landing Rwy 26R: Select HAINZ approach transition.
- NOTE: Landing Rwy 26L: Select BOYKN approach transition.
- NOTE: Landing Rwy 27R: Select MMCAP approach transition.



OZZI  
Landing East: Expect 14000  
Landing West: Expect 12000 and 250K

(OZZI, OZZI1) 2430S  
OZZI ONE ARRIVAL (RNAV)

Arrival Routes

ATLANTA, GEORGIA  
HARTSFIELD/JACKSON ATLANTA INTL (ATL)  
AL-26 (FAA)

(CONTINUED ON FOLLOWING PAGE)

NOTE: Chart not to scale.

# OZZI ONE ARRIVAL (RNAV)

## ARRIVAL DESCRIPTION

From OZZI on track 227° to HAARY.

LANDING RWYS 8L/R: From HAARY on track 216° to KILRR, then on track 275° to GAASS, then on track 275° to KLOWD, then on track 275° to KUNFU, then on track 275° to TRAPE, then on track 275° to SNEVE, then on track 275°. Expect RADAR vectors to final approach course.

LANDING RWYS 9L/R, 10: From HAARY on track 216° to KILRR, then on track 216° to FRYES, then on track 275° to SHURT, then on track 275° to REMAC, then on track 275° to DACTL, then on track 275° to STUMP, then on track 275°. Expect RADAR vectors to final approach course.

LANDING RWY 26L: From HAARY on track 183° to cross CALLA at 9000, then on track 183° to cross POSEY at or above 8000, then on track 207° to cross JIRRI at or above 5000, then on track 275° to cross BOYKN at or above 5000. Expect ILS Rwy 26L approach.

LANDING RWY 26R: From HAARY on track 183° to cross CALLA at 9000, then on track 183° to cross POSEY at or above 8000, then on track 208° to cross ZELow at or above 5000, then on track 275° to cross HAINZ at or above 5000. Expect ILS Rwy 26R approach.

LANDING RWY 27L: From HAARY on track 183° to cross CALLA at 9000, then on track 183° to cross POSEY at or above 8000, then on track 201° to cross SLVAA at or above 7000, then on track 275° to cross ROMMM at or above 6000. Expect ILS Rwy 27L approach.

LANDING RWY 27R: From HAARY on track 183° to cross CALLA at 9000, then on track 183° to cross POSEY at or above 8000, then on track 198° to cross YOUYU at or above 7000, then on track 275° to cross MMCAP at or above 6000. Expect ILS Rwy 27R approach.

LANDING RWY 28: From HAARY on track 183° to cross CALLA at 9000, then on track 183° to cross POSEY at or above 8000, then on track 180° to cross BLUFF at 8000, then on track 180°. Expect RADAR vectors to final approach course.

### LOST COMMUNICATIONS:

LANDING EAST: ASSIGNED RWY 8L OR Rwy NOT ASSIGNED: Cross OZZI at 14000; cross GAASS at 12000, cross KUNFU at or above 7000; cross SNEVE at 5000; after SNEVE turn left direct LARII and proceed on the ILS or RNAV Rwy 8L approach.

LANDING EAST: ASSIGNED RWY 8R: Cross OZZI at 14000; cross GAASS at 12000; cross KUNFU at or above 7000; cross SNEVE at 5000; after SNEVE turn left direct GPEAT and proceed on the ILS or RNAV Rwy 8R approach.

LANDING EAST: ASSIGNED RWY 9L: Cross OZZI at 14000; cross FRYES at 12000; cross REMAC at or above 7000; cross STUMP at 4000; after STUMP turn right direct RYENN and proceed on the ILS or RNAV Rwy 9L approach.

LANDING EAST: ASSIGNED RWY 9R: Cross OZZI at 14000; cross FRYES at 12000; cross REMAC at or above 7000; cross STUMP at 4000; after STUMP turn right direct ANDIY and proceed on the ILS or RNAV Rwy 9R approach.

LANDING EAST: ASSIGNED RWY 10: Cross OZZI at 14000; cross FRYES at 12000; cross REMAC at or above 7000; cross STUMP at 4000; after STUMP turn right direct DEWHY and proceed on the ILS or RNAV Rwy 10 approach.

LANDING WEST: ASSIGNED RWY 28: Cross OZZI at 14000; cross CALLA at 9000; cross POSEY at or above 8000; cross BLUFF at 8000; after BLUFF descend to 6000 and proceed direct PRMAN; proceed on the ILS or RNAV Rwy 28 approach.

# OZZI ONE ARRIVAL (RNAV)

SE-4, 26 DEC 2024 to 23 JAN 2025

SE-4, 26 DEC 2024 to 23 JAN 2025