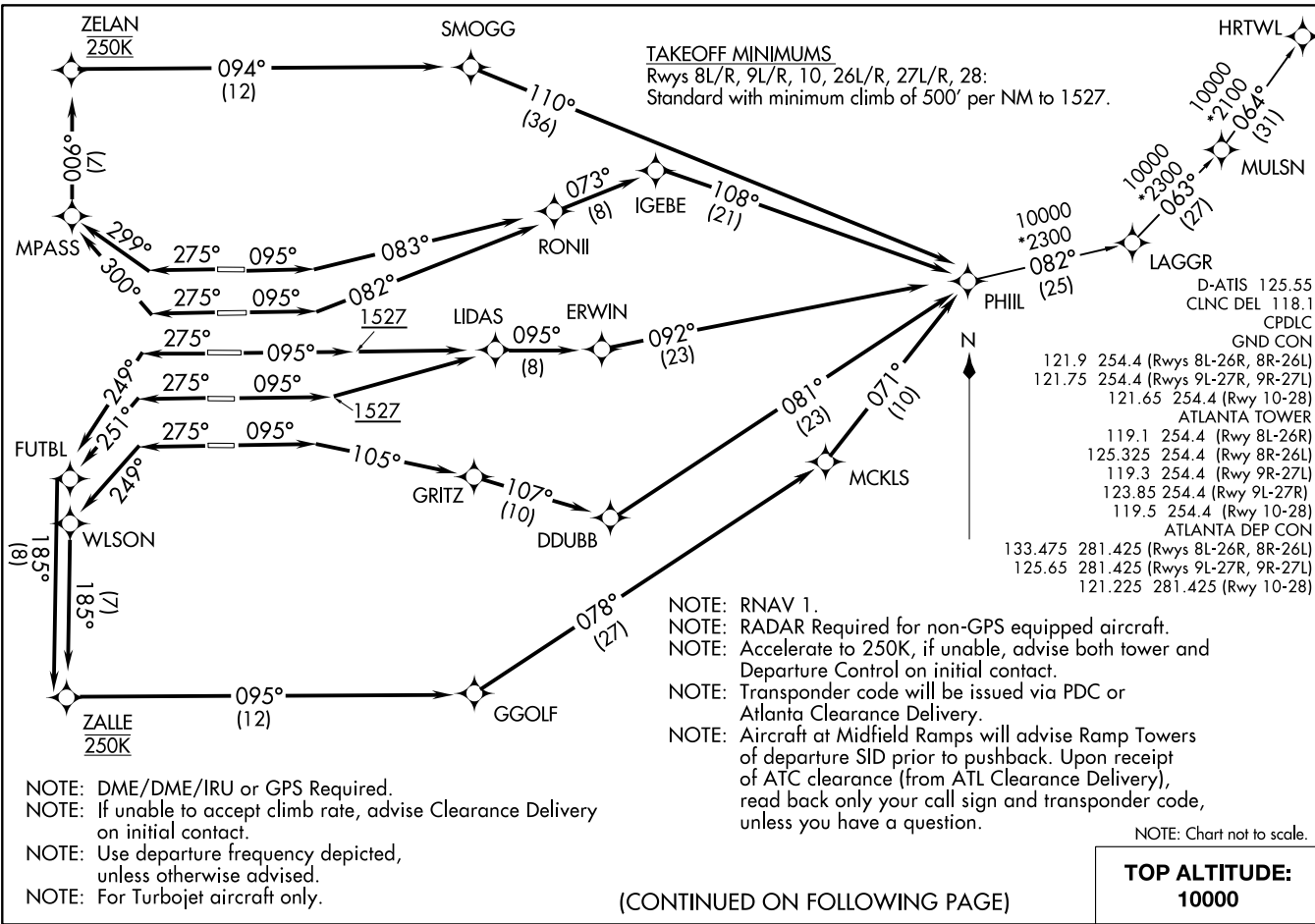


PHIL THREE DEPARTURE (RNAV)
(PHIL3, PHIL) 070CT121

HARTSFIELD/JACKSON ATLANTA INTL (ATL)
ATLANTA, GEORGIA



(CONTINUED ON FOLLOWING PAGE)

TOP ALTITUDE:
10000

PHIL THREE DEPARTURE (RNAV)
(PHIL3, PHIL) 24305

HARTSFIELD/JACKSON ATLANTA INTL (ATL)
ATLANTA, GEORGIA



DEPARTURE ROUTE DESCRIPTION
SEE ADDITIONAL REQUIREMENTS ON AAUP

TAKEOFF RUNWAY 8L: Climb on heading 095° to intercept course 083° to RONII, then on depicted route to PHIII, thence. . . .

TAKEOFF RUNWAY 8R: Climb on heading 095° to intercept course 082° to RONII, then on depicted route to PHIII, thence. . . .

TAKEOFF RUNWAYS 9L/R: Climb on heading 095° to 1527, then direct LIDAS, then on depicted route to PHIII, thence. . . .

TAKEOFF RUNWAY 10: Climb on heading 095° to intercept course 105° to GRITZ, then on depicted route to PHIII, thence. . . .

TAKEOFF RUNWAY 26L: Climb on heading 275° to intercept course 300° to MPASS, then on depicted route to PHIII, maintain 250K to ZELAN, thence. . . .

TAKEOFF RUNWAY 26R: Climb on heading 275° to intercept course 299° to MPASS, then on depicted route to PHIII, maintain 250K to ZELAN, thence. . . .

TAKEOFF RUNWAY 27L: Climb on heading 275° to intercept course 251° to FUTBL, then on depicted route to PHIII, maintain 250K to ZALLE, thence. . . .

TAKEOFF RUNWAY 27R: Climb on heading 275° to intercept course 249° to FUTBL, then on depicted route to PHIII, maintain 250K to ZALLE, thence. . . .

TAKEOFF RUNWAY 28: Climb on heading 275° to intercept course 249° to WLSON, then on depicted route to PHIII, maintain 250K to ZALLE, thence. . . .

. . . .maintain 10000. Expect clearance to filed altitude ten minutes after departure.

HRTWL TRANSITION (PHIL3.HRTWL)

SE-4, 26 DEC 2024 to 23 JAN 2025

SE-4, 26 DEC 2024 to 23 JAN 2025