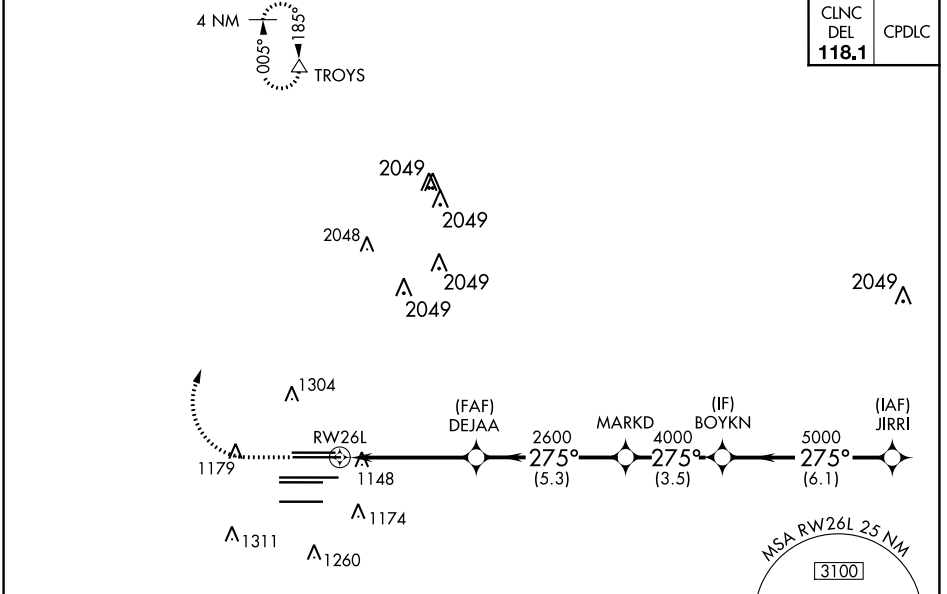


WAAS CH 56300 W26A	APP CRS 275°	Rwy Idg 9999 TDZE 996 Apt Elev 1026
--	------------------------	--

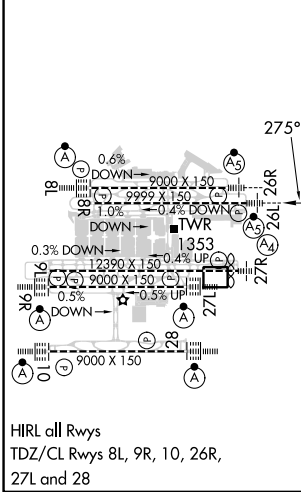
RNAV (GPS) RWY 26L
HARTSFIELD/JACKSON ATLANTA INTL (ATL)

<p>▽ For uncompensated Baro-VNAV systems, LNAV/VNAV NA below -7°C (20°F) or above 54°C (130°F). DME/DME RNP-0.3 NA. For inop MALSR, increase LPV all Cats visibility to RVR 4500, LNAV/VNAV all Cats visibility to RVR 6000. Simultaneous approach authorized with Rwy 27L or 27R or 28. LNAV procedure NA during simultaneous operations. Use of FD or AP providing RNAV track guidance required during simultaneous operations.</p>	<p>MALSR </p>	<p>MISSED APPROACH: Climb to 1500 then climbing right turn to 3500 direct TROYS and hold.</p>
--	-------------------	---

D-ATIS ARR 119.65	ATLANTA APP CON	ATLANTA TOWER					ALL RWYS	GND CON	ALL RWYS		
DEP 125.55	127.9 379.9	8L-26R	8R-26L	9L-27R	9R-27L	10-28	(8L-26R,8R-26L)	(9L-27R,9R-27L)	10-28		
		119.1	125.325	123.85	119.3	119.5	254.4	121.9	121.75	121.65	254.4

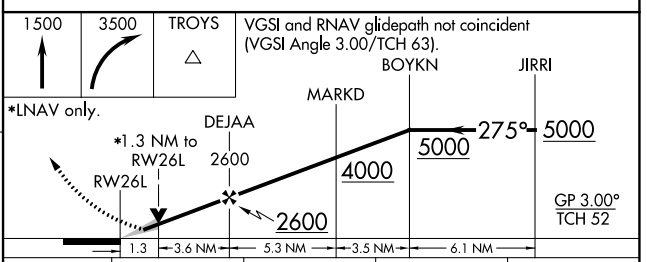


ELEV 1026	D	TDZE 996
-----------	----------	----------



HIRL all Rwys
TDZ/CL Rwys 8L, 9R, 10, 26R,
27L and 28

RADAR REQUIRED



CATEGORY	A	B	C	D
LPV DA		1281/24	285 (300-½)	
LNAV/VNAV DA		1360/35	364 (400-⅓)	
LNAV MDA	1460/24	464 (500-½)	1460/50	464 (500-1)

SE-4, 26 DEC 2024 to 23 JAN 2025

SE-4, 26 DEC 2024 to 23 JAN 2025