

ATLANTA, GEORGIA

AL-26 (FAA)

24305

WAAS CH <b>65700</b> <b>W27A</b>	APP CRS <b>275°</b>	Rwy Idg <b>8865</b> TDZE <b>999</b> Apt Elev <b>1026</b>
--	------------------------	--

# RNAV (GPS) RWY 27L

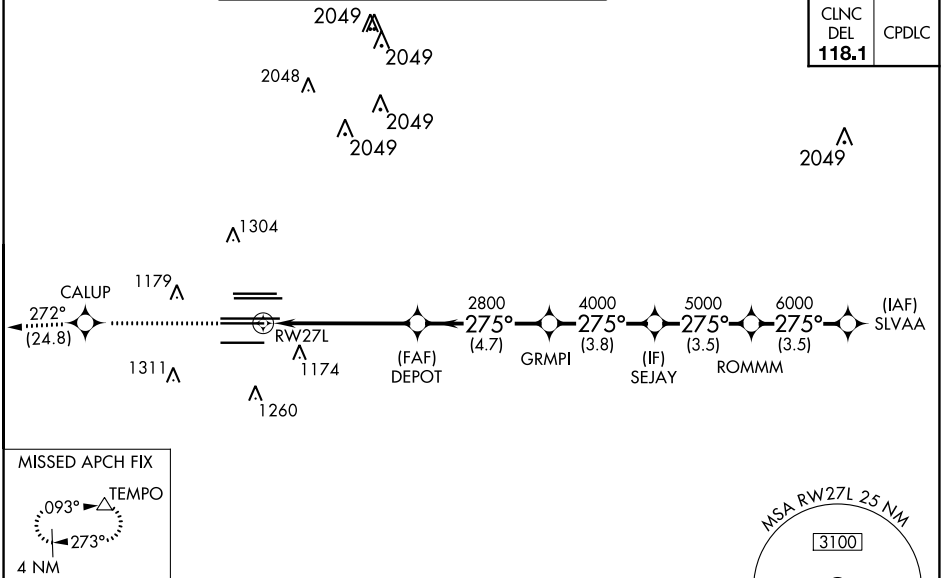
HARTSFIELD/JACKSON ATLANTA INTL (ATL)

▼ For uncompensated Baro-VNAV systems, LNAV/VNAV NA below -7°C (20°F) or above 54°C (130°F). DME/DME RNP-0.3 NA. Simultaneous approach authorized with Rwy 26R or 26L. LNAV procedure NA during simultaneous operations. Use of FD or AP providing RNAV track guidance required during simultaneous operations.

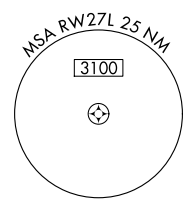
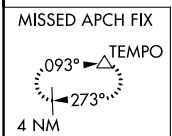


MISSED APPROACH: Climb to 4000 direct CALUP and on track 272° to TEMPO and hold.

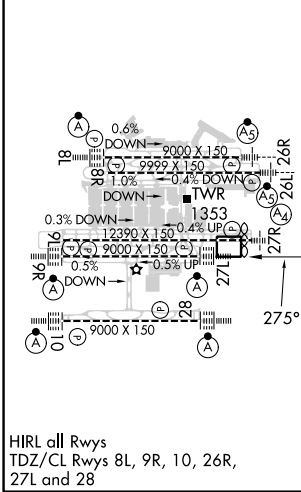
D-ATIS ARR <b>119.65</b>	ATLANTA APP CON <b>127.9 379.9</b>	ATLANTA TOWER 8L-26R 8R-26L 9L-27R 9R-27L 10-28 RWYS <b>119.1 125.325 123.85 119.3 119.5 254.4</b>				ALL RWYS <b>121.9</b>	GND CON (8L-26R,8R-26L) (9L-27R,9R-27L) 10-28 RWYS <b>121.75 121.65 254.4</b>
-----------------------------	--	--	--	--	--	-----------------------------	---



CLNC DEL <b>118.1</b>	CPDLC
-----------------------------	-------



ELEV 1026	<b>D</b>	TDZE 999
-----------	----------	----------



ATLANTA, GEORGIA  
Amdt 5A 12OCT17

## RADAR REQUIRED

4000	CALUP	tr 272°	TEMPO	VGSI and RNAV glidepath not coincident (VGSI Angle 3.00/TCH 79).				SLVAA
*LNAV only.		DEPOT	GRMPI	SEJAY	ROMMMM	7000		
RWY 27L		*1.7 NM to RWY 27L	2800	4000	5000	6000	7000	GP 3.00° TCH 58
1.7 NM		3.8 NM	4.7 NM	3.8 NM	3.5 NM	3.5 NM		
CATEGORY	A	B	C	D				
LPV DA	1199/18		200 (200-½)					
LNAV/VNAV DA	1528-1¾		529 (600-1¾)					
LNAV MDA	1620/24	621 (600-½)		1620-1¾		621 (600-1¾)		

SE-4, 26 DEC 2024 to 23 JAN 2025

SE-4, 26 DEC 2024 to 23 JAN 2025