

WAAS CH 62800 W09D	APP CRS 095°	Rwy Idg 11730 TDZE 1019 Apt Elev 1026
--	------------------------	--

RNAV (GPS) RWY 9L

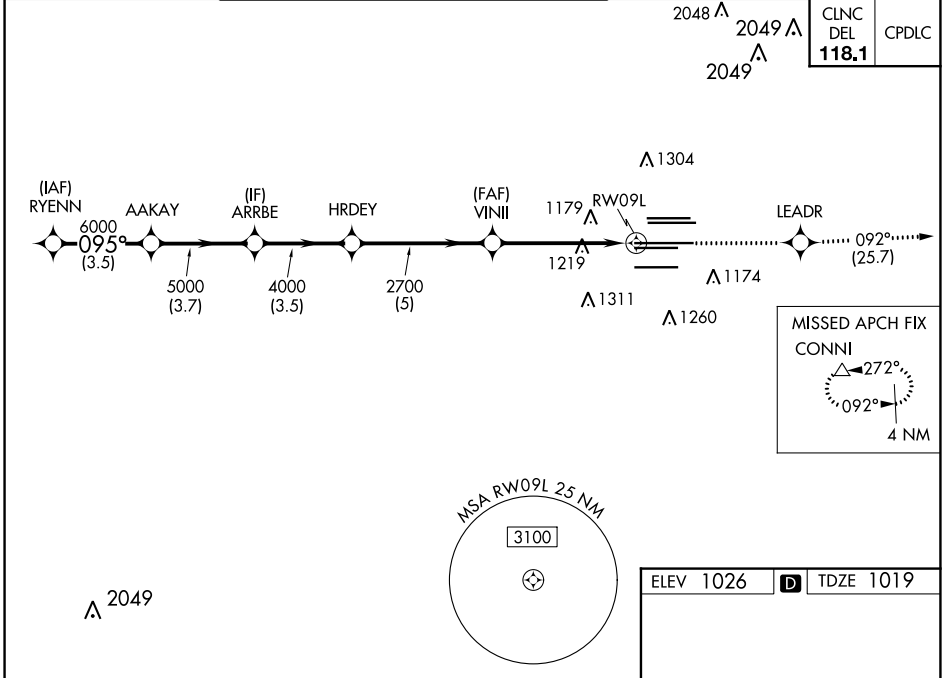
HARTSFIELD/JACKSON ATLANTA INTL (ATL)

RNP APCH.

▼ For uncompensated Baro-VNAV systems, LNAV/VNAV NA below -7°C or above 54°C. Rwy 9L helicopter visibility reduction below RVR 4000 NA. Simultaneous approach authorized with Rwy 8L or 8R or 10, or Rwy 8L and 10. LNAV procedure NA during simultaneous operations. Use of FD or AP providing RNAV track guidance required during simultaneous operations.

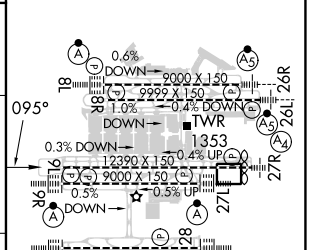
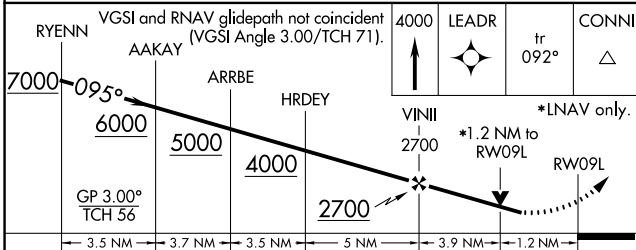
MISSED APPROACH: Climb to 4000 direct LEADR and on track 092° to CONNI and hold.

D-ATIS ARR 119.65	ATLANTA APP CON 127.9 379.9	ATLANTA TOWER 8L-26R 8R-26L 9L-27R 9R-27L 10-28 RWYS 119.1 125.325 123.85 119.3 119.5 254.4				ALL RWYS 121.9	GND CON 10-28 RWYS 121.75 121.65 254.4	ALL RWYS 254.4
-----------------------------	--	--	--	--	--	-----------------------------	---	-----------------------------



2048 Δ	2049 Δ	CLNC DEL 118.1	CPDLC
---------------	---------------	-----------------------------	-------

ELEV 1026	D TDZE 1019
-----------	--------------------



CATEGORY	A	B	C	D
LPV DA		1359/50	340 (400-1)	
LNAV/VNAV DA		1405/60	386 (400-1½)	
LNAV MDA	1480/55	461 (500-1)	1480-1½	461 (500-1½)

HIRL all Rwys
TDZ/CL Rwys 8L, 9R,
10, 26R, 27L and 28