

ATLANTA, GEORGIA

AL-26 (FAA)

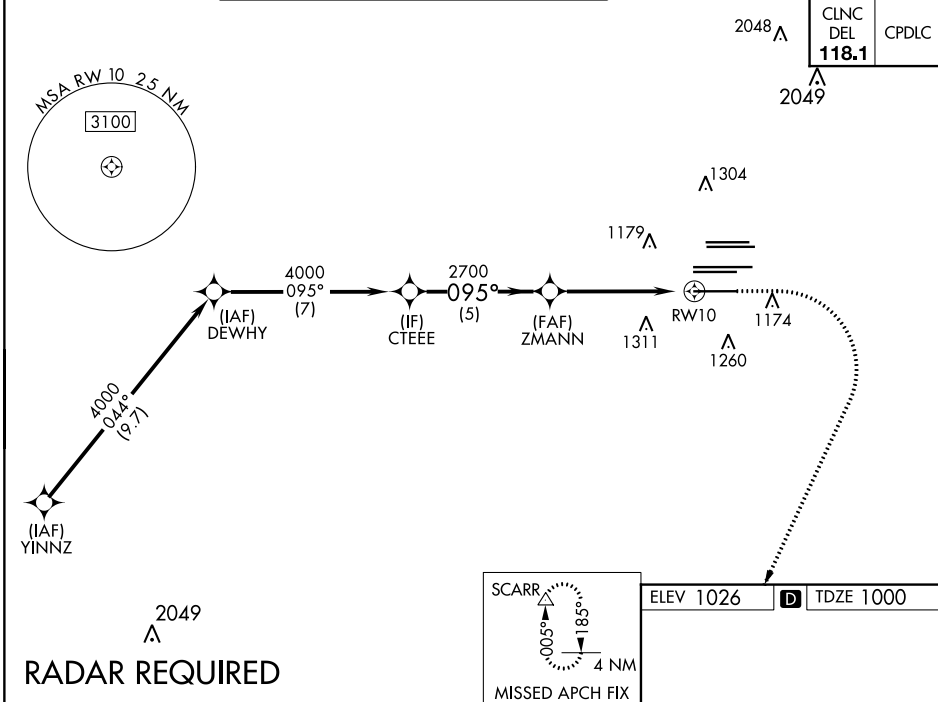
RNAV (GPS) PRM Y RWY 10 (SIMULTANEOUS CLOSE PARALLEL) HARTSFIELD/JACKSON ATLANTA INTL (ATL)

WAAS CH 40399 W10A	APP CRS 095°	Rwy Idg TDZE 1000 Apt Elev 1026	9000
--	------------------------	---	-------------

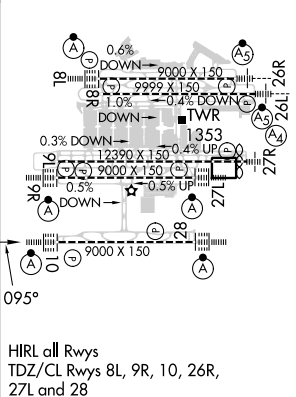
For uncompensated Baro-VNAV systems, LNAV/VNAV NA below -7°C (20°F) or above 54°C (130°F). DME/DME RNP-0.3 NA. For inop ALSF-2, increase LNAV/VNAV all Cats visibility to 1½ mile. Simultaneous close parallel approach authorized with ILS PRM and RNAV PRM Rwy 8L or 8R or 9L or 9R, or Rwys 8L and 9L, or Rwys 8L and 9R, or Rwys 8R and 9L, or Rwys 8R and 9R. See additional requirements on AAUP. Dual VHF comm required. Use of FD or AP providing RNAV track guidance required during simultaneous operations.

ALSF-2
MISSED APPROACH: Climb to 1500 then climbing right turn to 3000 direct SCARR and hold.

D-ATIS ARR 119.65 DEP 125.55	ATLANTA APP CON 127.9 379.9	ATLANTA TOWER 8L-26R 8R-26L 9L-27R 9R-27L 10-28 RWYS 119.1 125.325 123.85 119.3 119.5 254.4 PRM 133.425	ALL RWYS 121.9 121.75 121.65 254.4	GND CON (8L-26R,8R-26L) (9L-27R,9R-27L) 10-28 RWYS 121.9 121.75 121.65 254.4
--	--	--	---	---



DEWHY	CTEEE	ZMANN	RWY 10
4000	4000	2700	
7 NM	5 NM	5.2 NM	
GP 3.00° TCH 55			
CATEGORY	A	B	C
LPV DA		1200/18	200 (200-½)
LNAV/VNAV DA		1455/55	455 (500-1)



ATLANTA, GEORGIA
Orig-A 12OCT17

33°38'N-84°26'W

HARTSFIELD/JACKSON ATLANTA INTL (ATL)

RNAV (GPS) PRM Y RWY 10 (SIMULTANEOUS CLOSE PARALLEL)

SE-4, 26 DEC 2024 to 23 JAN 2025

SE-4, 26 DEC 2024 to 23 JAN 2025