

APP CRS	Rwy Idg	<b>8800</b>
<b>095°</b>	TDZE	<b>1015</b>
	Apt Elev	<b>1026</b>

# RNAV (RNP) Z RWY 8L

HARTSFIELD/JACKSON ATLANTA INTL (ATL)

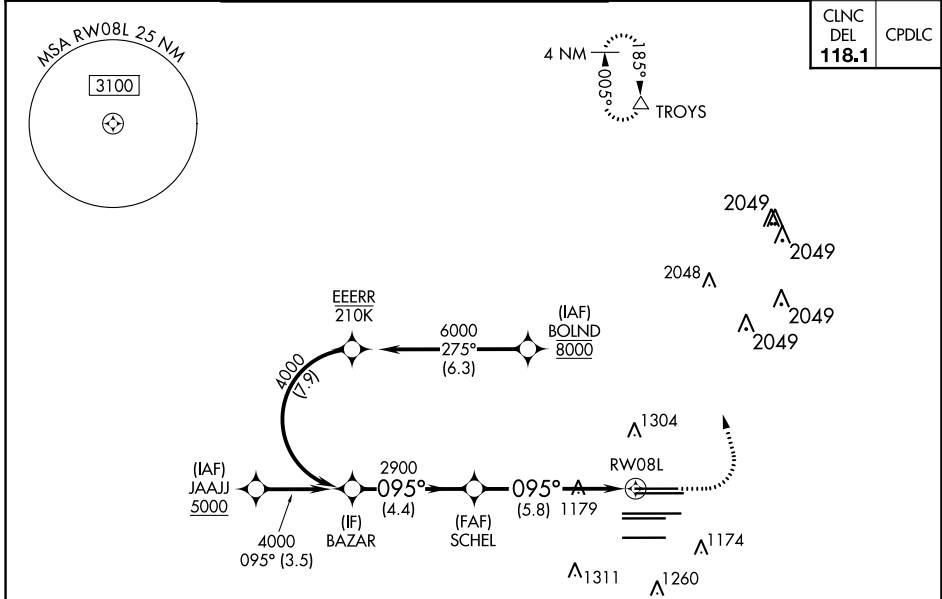
RNP AR APCH - GPS.

▼ For uncompensated Baro-VNAV systems, procedure NA below -5°C or above 54°C.  
For inop ALS, increase RNP 0.15 all Cats RVR to 5500. Simultaneous approach authorized. Arrival from BOLND NA during simultaneous triple approaches.

ALSF-2

MISSED APPROACH: Climb to 1500 then dimbing left turn to 3500 direct TROYS and hold.

D-ATIS	ATLANTA APP CON	ATLANTA TOWER				ALL RWYS	GND CON	ALL RWYS
ARR <b>119.65</b>		8L-26R	8R-26L	9L-27R	9R-27L	10-28	(8L-26R,8R-26L) (9L-27R,9R-27L)	10-28
DEP <b>125.55</b>	<b>127.9 379.9</b>	<b>119.1</b>	<b>125.325</b>	<b>123.85</b>	<b>119.3</b>	<b>119.5</b>	<b>121.9</b>	<b>121.75 121.65 254.4</b>



ELEV 1026	TDZE 1015
-----------	-----------

GP 3.00° TCH 50

BAZAR

4000

095°

2900

SCHEL

2900

RW08L

1500

3500

TROYS

0.6% DOWN - 9000 X 150

1.0% DOWN - 2292 X 150

0.4% DOWN - 1353

0.3% DOWN - 12390 X 150

0.5% DOWN - 9000 X 150

0.5% UP - 9000 X 150

0.4% UP - 1353

TWR

HIRL all Rwys TDZ/CL Rwys 8L, 9R, 10, 26R, 27L and 28

VGSI and RNAV glidepath not coincident (VGSI Angle 3.00/TCH 70).	1500	3500	TROYS
BAZAR	4000	2900	RW08L
GP 3.00° TCH 50	4.4 NM	5.8 NM	
CATEGORY	A	B	C
RNP 0.15 DA		1380/35	365 (400-%)
RNP 0.30 DA		1458/45	443 (500-%)
<b>AUTHORIZATION REQUIRED</b>			

SE-4, 26 DEC 2024 to 23 JAN 2025

SE-4, 26 DEC 2024 to 23 JAN 2025