

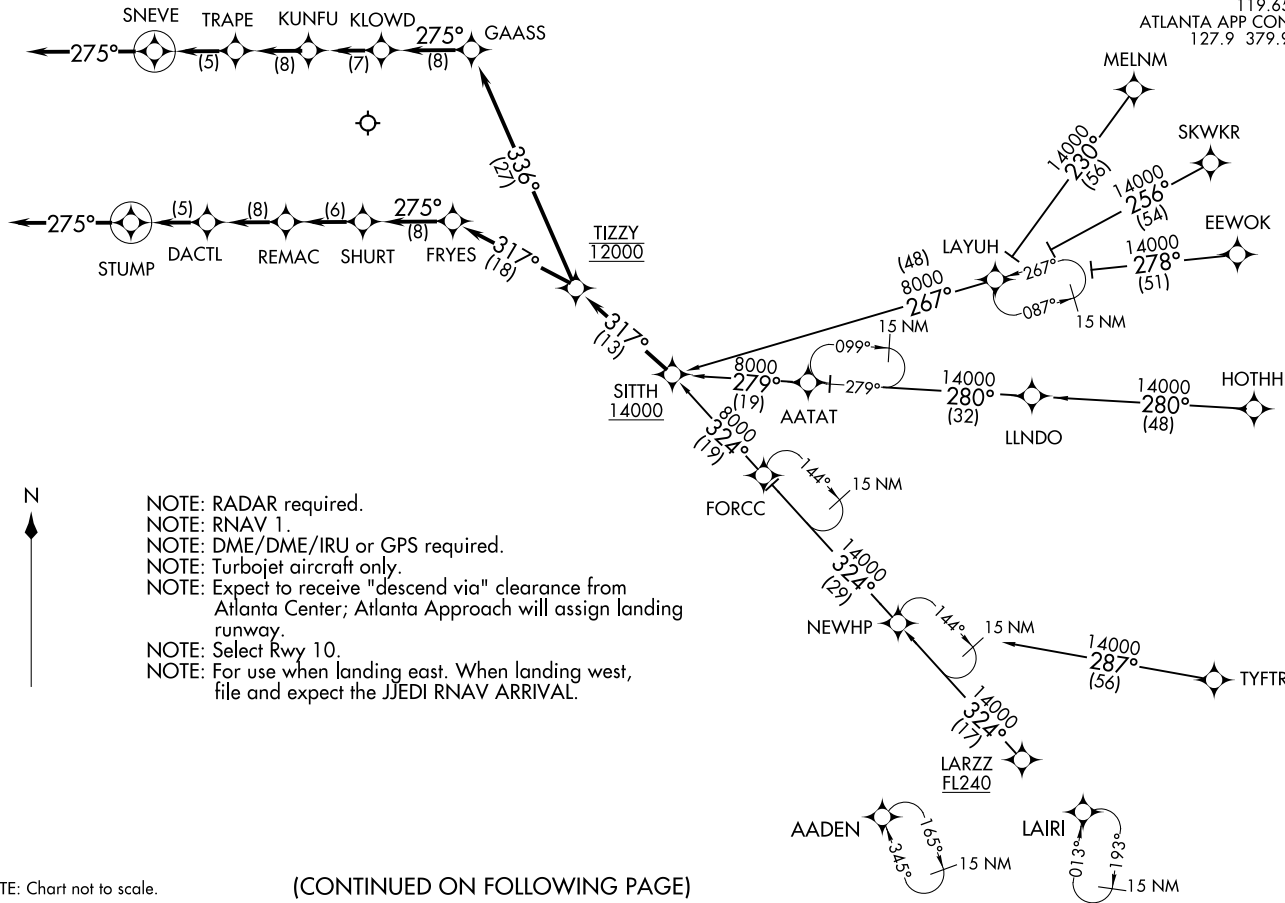
SITHH TWO ARRIVAL(RNAV)  
(SITHH.SITHH2) 01FEB18

HARTSFIELD/JACKSON ATLANTA INTL (ATL)  
ATLANTA, GEORGIA

(SITHH.SITHH2) 24305  
SITHH TWO ARRIVAL(RNAV)

HARTSFIELD/JACKSON ATLANTA INTL (ATL)  
ATLANTA, GEORGIA  
AL-26 (FAA)

D-ATIS ARR 119.65  
ATLANTA APP CON 127.9 379.9



- NOTE: RADAR required.
- NOTE: RNAV 1.
- NOTE: DME/DME/IRU or GPS required.
- NOTE: Turbojet aircraft only.
- NOTE: Expect to receive "descend via" clearance from Atlanta Center; Atlanta Approach will assign landing runway.
- NOTE: Select Rwy 10.
- NOTE: For use when landing east. When landing west, file and expect the JJEDI RNAV ARRIVAL.

NOTE: Chart not to scale.

(CONTINUED ON FOLLOWING PAGE)

ARRIVAL ROUTE DESCRIPTION

EEWOK TRANSITION (EEWOK.SITTH2)

HOTHH TRANSITION (HOTHH.SITTH2)

LARZZ TRANSITION (LARZZ.SITTH2)

LAYUH TRANSITION (LAYUH.SITTH2)

MELNM TRANSITION (MELNM.SITTH2): Assigned by ATC only.

SKWKR TRANSITION (SKWKR.SITTH2)

TYFTR TRANSITION (TYFTR.SITTH2)

From SITTH on track 317° to cross TIZZY at 12000.

LANDING RWYS 8L/R: From TIZZY on track 336° to GAASS, then on track 275° to KLOWD, then on track 275° to KUNFU, then on track 275° to TRAPE, then on track 275° to SNEVE, then on track 275°. Expect RADAR vectors to final approach course.

LANDING RWYS 9L/R, 10: From TIZZY on track 317° to FRYES, then on track 275° to SHURT, then on track 275° to REMAC, then on track 275° to DACTL, then on track 275° to STUMP, then on track 275°. Expect RADAR vectors to final approach course.

LOST COMMUNICATIONS

ASSIGNED RWY 10 OR RWY NOT ASSIGNED: Cross SITTH at or above 14000; cross TIZZY at 12000; cross FRYES at 12000; cross REMAC at or above 7000; cross STUMP at 4000; after STUMP turn right direct DEWHY and proceed on the ILS or RNAV Rwy 10 approach.

ASSIGNED RWY 9L: Cross SITTH at or above 14000; cross TIZZY at 12000; cross FRYES at 12000; cross REMAC at or above 7000; cross STUMP at 4000; after STUMP turn right direct RYENN and proceed on the ILS or RNAV Rwy 9L approach.

ASSIGNED RWY 9R: Cross SITTH at or above 14000; cross TIZZY at 12000; cross FRYES at 12000; cross REMAC at or above 7000; cross STUMP at 4000; after STUMP turn right direct ANDIY and proceed on the ILS or RNAV Rwy 9R approach.

ASSIGNED RWY 8L: Cross SITTH at or above 14000; cross TIZZY at 12000; cross GAASS at 12000, cross KUNFU at or above 7000; cross SNEVE at 5000; after SNEVE turn left direct LARII and proceed on the ILS or RNAV Rwy 8L approach.

ASSIGNED RWY 8R: Cross SITTH at or above 14000; cross TIZZY at 12000; cross GAASS at 12000, cross KUNFU at or above 7000; cross SNEVE at 5000; after SNEVE turn left direct GPEAT and proceed on the ILS or RNAV Rwy 8R approach.