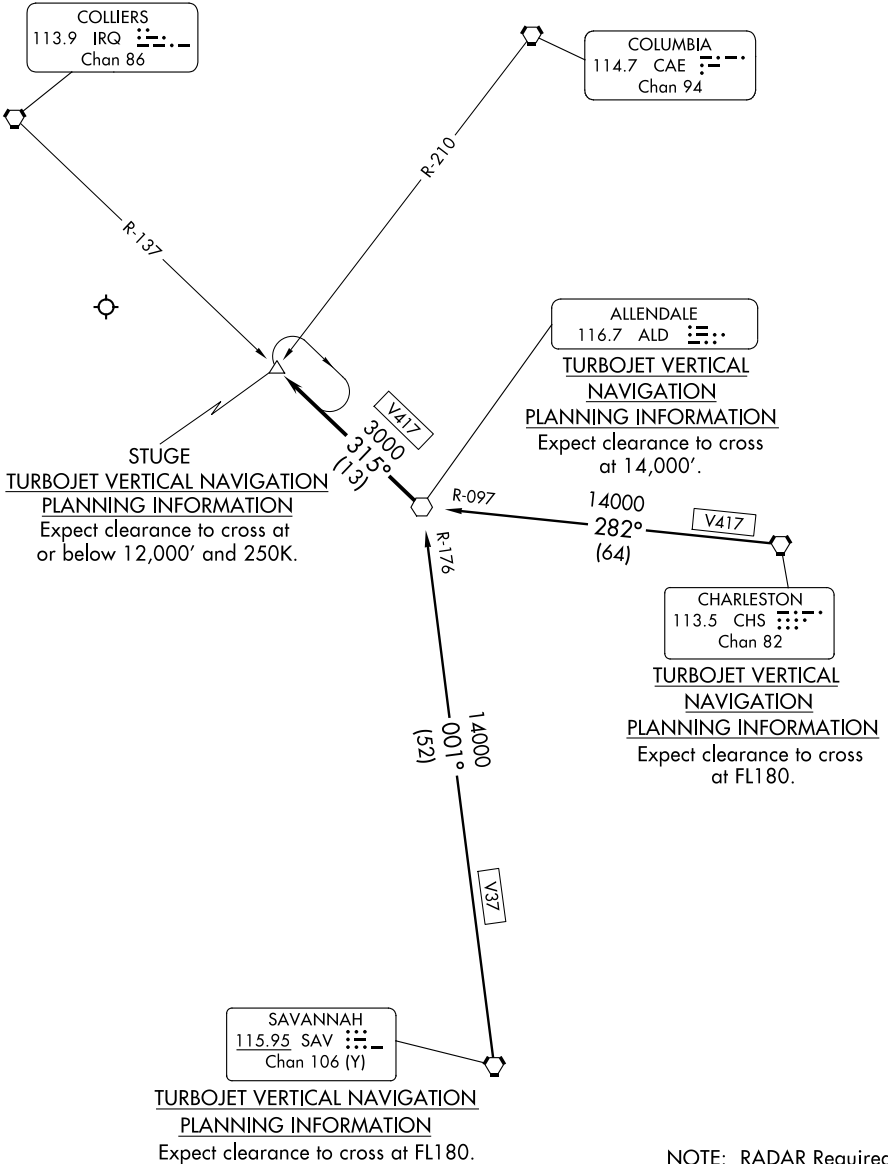


STUGE THREE ARRIVAL

AUGUSTA APP CON ★
119.15 284.625
ATIS
132.75



SE-4, 26 DEC 2024 to 23 JAN 2025

SE-4, 26 DEC 2024 to 23 JAN 2025

(CONTINUED ON FOLLOWING PAGE)

STUGE THREE ARRIVAL

ARRIVAL DESCRIPTION

CHARLESTON TRANSITION (CHS.STUGE3): From over CHS VORTAC via CHS R-282 and ALD R-097 to ALD VOR. Thence. . . .

SAVANNAH TRANSITION (SAV.STUGE3): From over SAV VORTAC via SAV R-001 and ALD R-176 to ALD VOR. Thence. . . .

. . . .from over ALD VOR via ALD R-315 to STUGE INT, MEA 3000. Expect RADAR vectors to final approach course.

SE-4, 26 DEC 2024 to 23 JAN 2025

SE-4, 26 DEC 2024 to 23 JAN 2025