

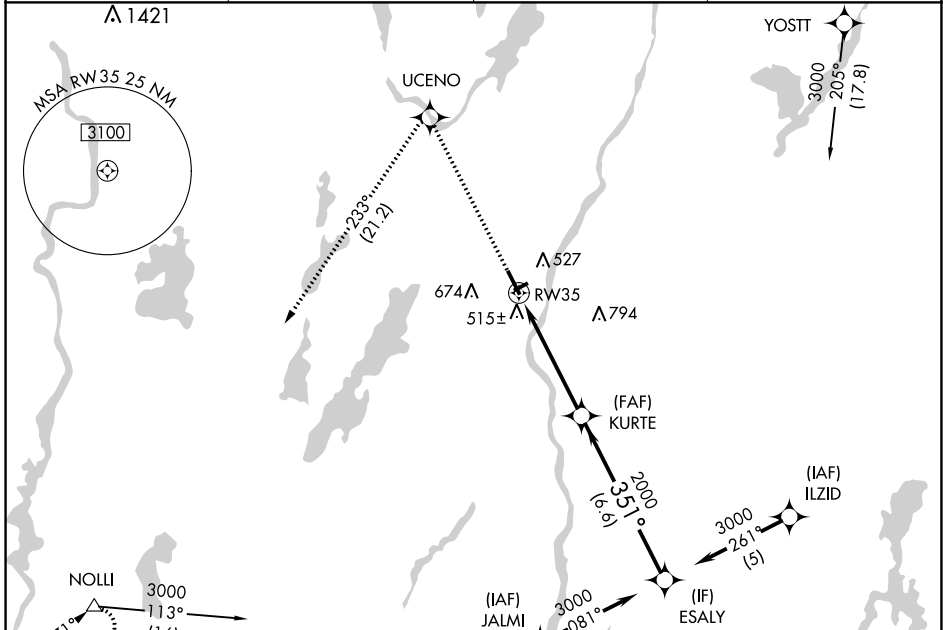
WAAS CH 70406 W35A	APP CRS 351°	Rwy Idg TDZE Apt Elev	5002 350 352
--	------------------------	-----------------------------	---

RNAV (GPS) RWY 35

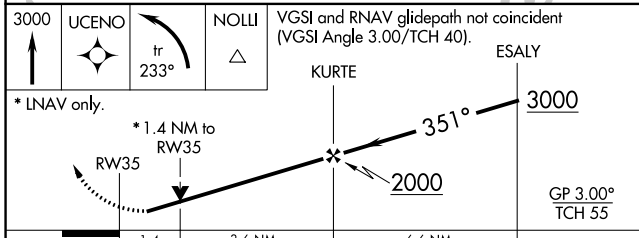
AUGUSTA STATE (AUG)

RNP APCH.	<p>⚠ Circling to Rwy 26 NA at night. Rwy 35 helicopter visibility reduction below $\frac{3}{4}$ SM NA. ⚠ For uncompensated Baro-VNAV systems, LNAV/VNAV NA below -15°C or above 54°C.</p>	MISSED APPROACH: Climb to 3000 direct UCENO and left turn on track 233° to NOLLI and hold.
-----------	---	--

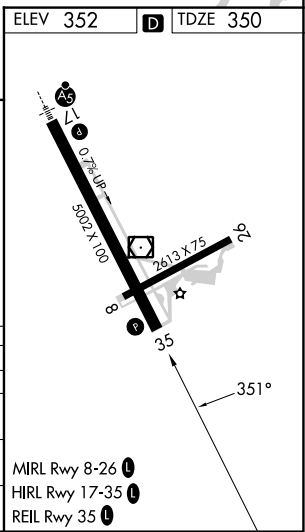
ASOS 118.325	PORTLAND APP CON * 128.35 299.2	CLNC DEL 119.95 299.2	UNICOM 123.0 (CTAF) 0
------------------------	---	---------------------------------	---------------------------------



ELEV 352	D	TDZE 350
----------	----------	----------



CATEGORY	A	B	C	D
LPV DA	610-1 260 (300-1)			
LNAV/VNAV DA	850-1 $\frac{3}{4}$ 500 (500-1 $\frac{3}{4}$)			
LNAV MDA	840-1	490 (500-1)	840-1 $\frac{3}{4}$ 490 (500-1 $\frac{3}{4}$)	840-1 $\frac{1}{2}$ 490 (500-1 $\frac{1}{2}$)
CIRCLING	880-1 $\frac{3}{4}$ 528 (600-1 $\frac{3}{4}$)	980-1 $\frac{3}{4}$ 628 (700-1 $\frac{3}{4}$)	1160-2 $\frac{1}{2}$ 808 (900-2 $\frac{1}{2}$)	



- MIRL Rwy 8-26 **0**
- HIRL Rwy 17-35 **0**
- REIL Rwy 35 **0**

NE-1, 26 DEC 2024 to 23 JAN 2025

NE-1, 26 DEC 2024 to 23 JAN 2025