

WAAS CH <b>86716</b> <b>W05A</b>	APP CRS <b>050°</b>	Rwy Idg TDZE Apt Elev	<b>5374</b> <b>160</b> <b>160</b>
--	------------------------	-----------------------------	---

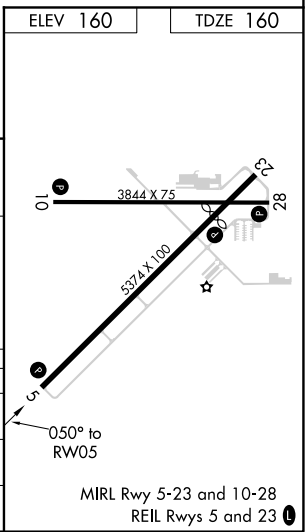
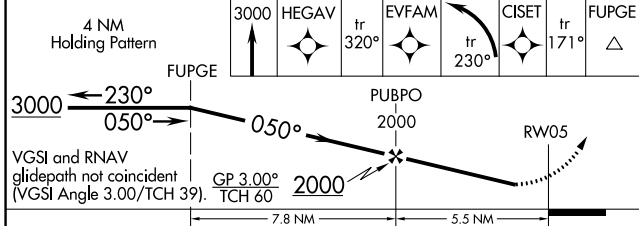
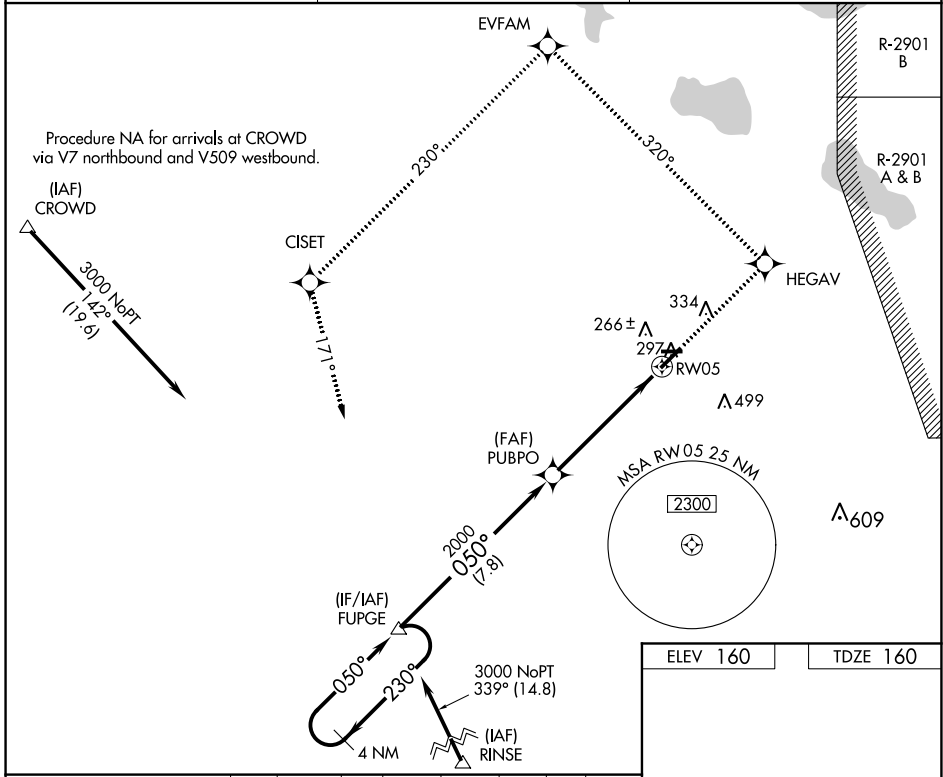
# RNAV (GPS) RWY 5

AVON PARK EXEC (AVO)

**NA** DME/DME RNP-0.3 NA. Rwy 5, 10, 23, 28, helicopter visibility reduction below 1 SM NA. When local altimeter setting not received, use Orlando Intl altimeter setting; increase DA to 578 feet and visibility Cat A/B ½ mile. Increase all MDA 140 feet. Procedure NA at night.

**MISSED APPROACH:** Climb to 3000 direct HEGAV and via track 320° to EVFAM and left turn via track 230° to CISET and via track 171° to HEGAV and hold.

AWOS-3 <b>118.725</b>	MIAMI CENTER ★ <b>134.55 257.7</b>	UNICOM <b>122.8 (CTAF) 0</b>
--------------------------	---------------------------------------	---------------------------------



CATEGORY	A	B	C	D
LPV DA	450-1	290 (300-1)		NA
LNAV MDA	540-1	380 (400-1)		NA
<b>CIRCLING</b>	680-1 520 (600-1)	840-1 680 (700-1)		NA

SE-3, 26 DEC 2024 to 23 JAN 2025

SE-3, 26 DEC 2024 to 23 JAN 2025