

VOR/DME BKE <b>115.3</b> Chan <b>100</b>	APP CRS <b>118°</b>	Rwy Idg TDZE Apt Elev <b>5084</b> <b>3370</b> <b>3373</b>
--	------------------------	--

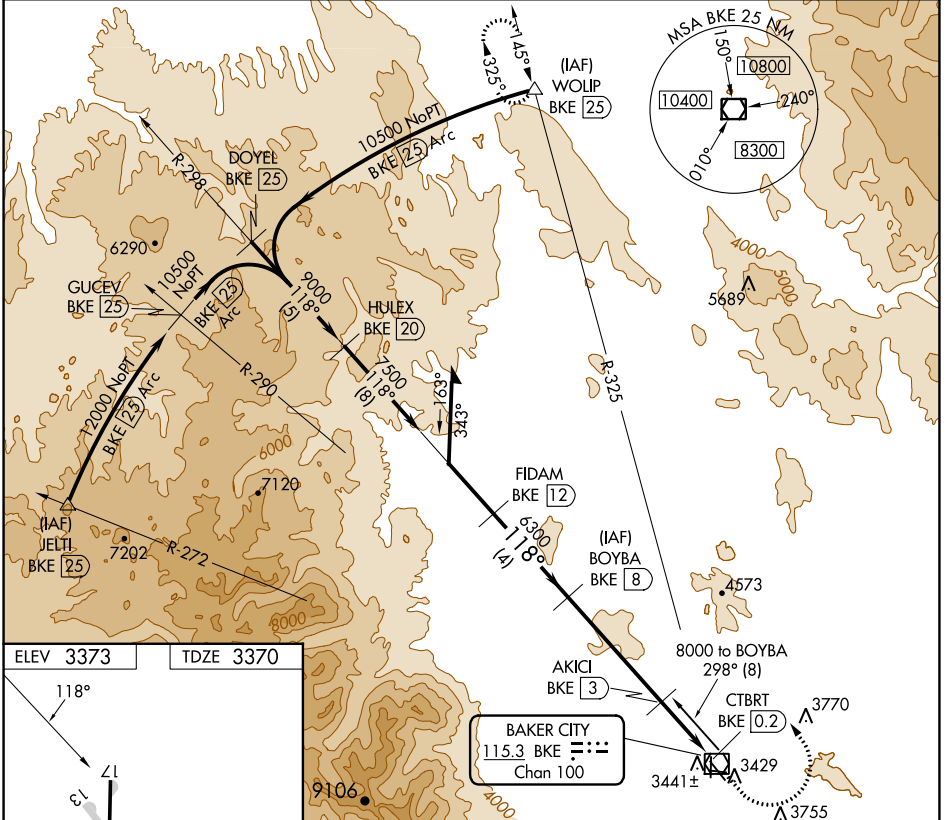
# VOR/DME RWY 13

BAKER CITY MUNI (BKE)

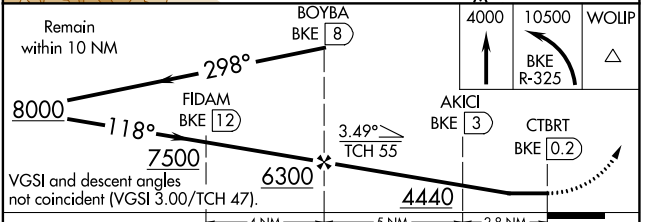
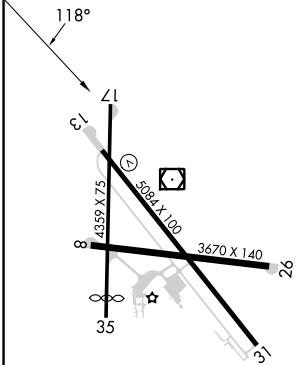
**⚠** Circling to Rwy 8/17/26/35 NA at night.  
**⚠** Helicopter visibility reduction below 1 SM NA.

MISSED APPROACH: Climb to 4000 then climbing left turn to 10500 via BKE R-325 to WOLIP and hold.

ASOS <b>134.275</b>	SALT LAKE CENTER <b>128.05 306.95</b>	UNICOM <b>123.0 (CTAF)</b> <b>📻</b>
------------------------	--	--



ELEV 3373 TDZE 3370



CATEGORY	A	B	C	D
S-13	4000-1	630 (700-1)	4000-1¾ 630 (700-1¾)	4000-2 630 (700-2)
<b>C</b> CIRCLING	4000-1	627 (700-1)	4560-3 1187 (1200-3)	4720-3 1347 (1400-3)

NW-1, 26 DEC 2024 to 23 JAN 2025

NW-1, 26 DEC 2024 to 23 JAN 2025