

# OILDALE ONE DEPARTURE

AL-36 (FAA)

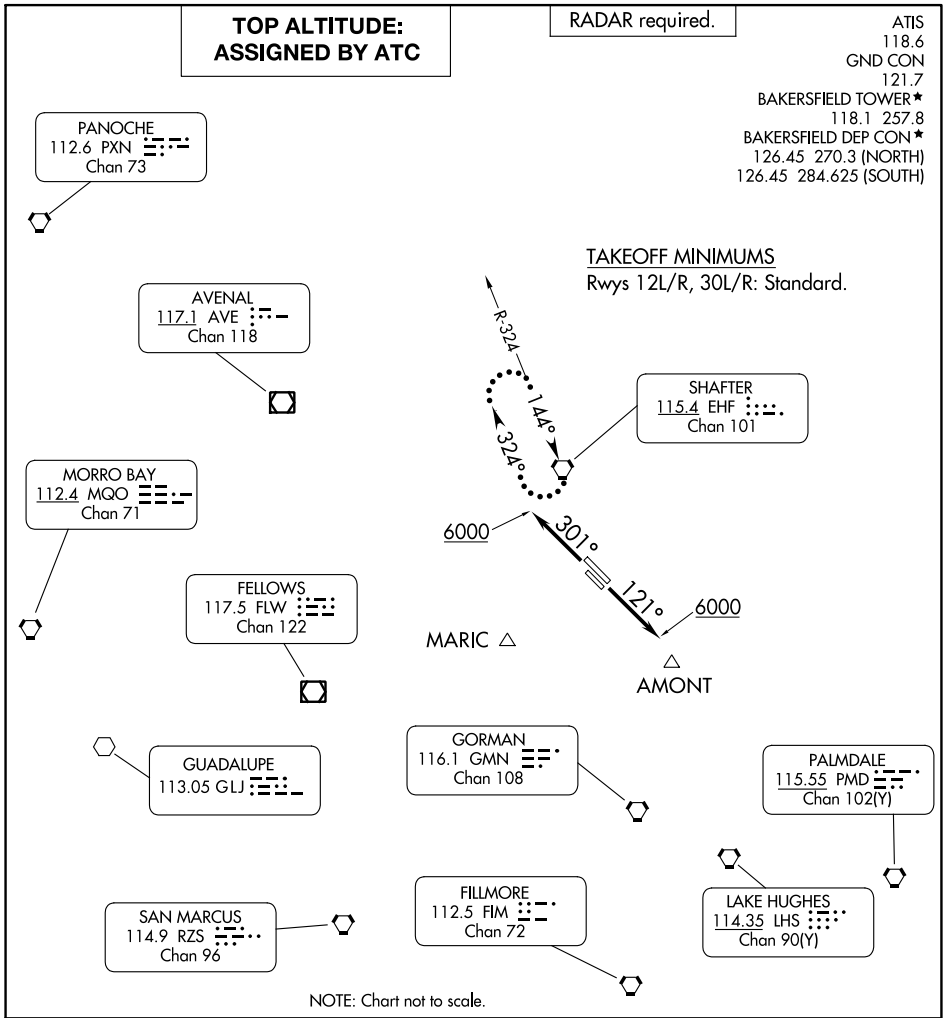
MEADOWS FLD (BFL)  
BAKERSFIELD, CALIFORNIA

**TOP ALTITUDE:  
ASSIGNED BY ATC**

RADAR required.

ATIS  
118.6  
GND CON  
121.7  
BAKERSFIELD TOWER★  
118.1 257.8  
BAKERSFIELD DEP CON★  
126.45 270.3 (NORTH)  
126.45 284.625 (SOUTH)

**TAKEOFF MINIMUMS**  
Rwys 12L/R, 30L/R: Standard.



SW-3, 26 DEC 2024 to 23 JAN 2025

SW-3, 26 DEC 2024 to 23 JAN 2025



## DEPARTURE ROUTE DESCRIPTION

TAKEOFF RUNWAYS 12L/R: Climb on heading 121° to 6000 for vector to assigned route/fix. Thence. . . .

TAKEOFF RUNWAYS 30L/R: Climb on heading 301° to 6000 for vector to assigned route/fix. Thence. . . .

. . . maintain ATC assigned altitude. Expect clearance to requested altitude five minutes after departure.

LOST COMMUNICATIONS: If no radio contact for two minutes, proceed direct SHAFTER VORTAC and hold. Climb in holding pattern to expected altitude prior to proceeding on course.

# OILDALE ONE DEPARTURE