

WAAS CH 78418 W12A	APP CRS 121°	Rwy Idg 10848 TDZE 510 Apt Elev 510
--	------------------------	--

RNAV (GPS) RWY 12L

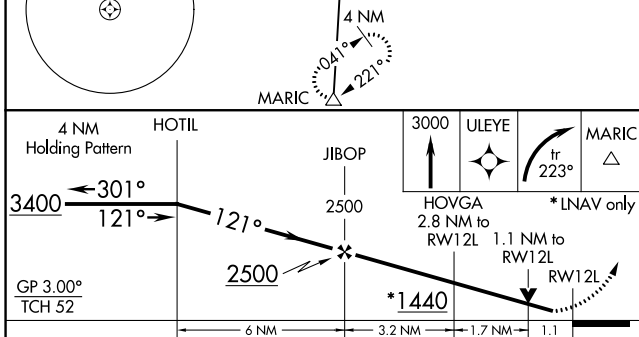
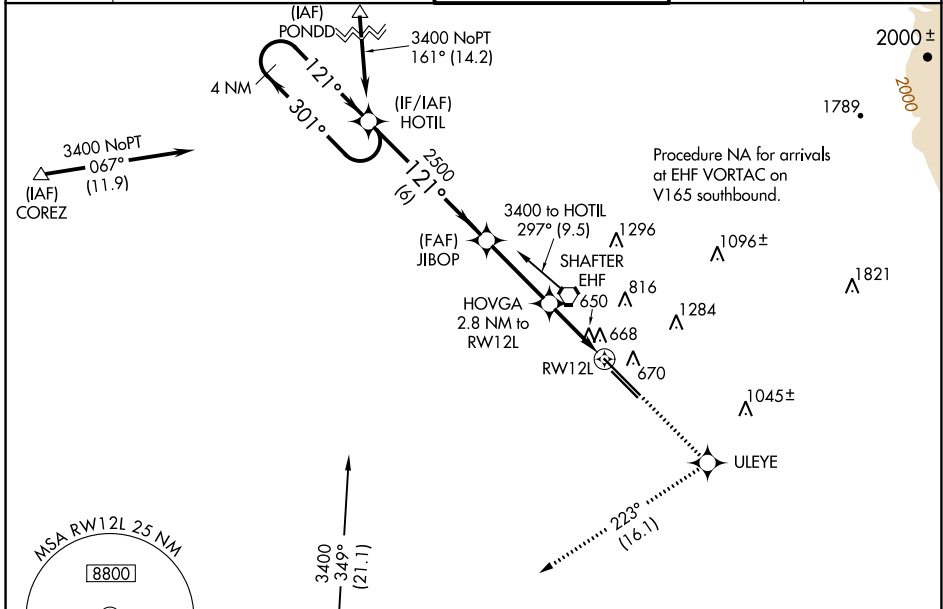
MEADOWS FLD (BFL)

RNP APCH.

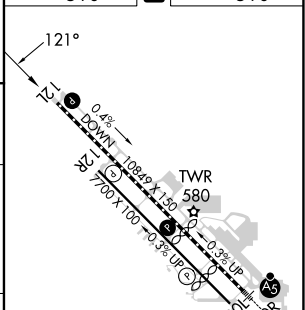
Baro-VNAV NA when using Porterville altimeter setting. For uncompensated Baro-VNAV systems, LNAV/VNAV NA below -16°C or above 54°C. Rwy 12L helicopter visibility reduction below ¾ SM NA. When local altimeter setting not received, use Porterville altimeter setting and increase all DA 92 feet, all MDA 100 feet, increase LPV all Cats, LNAV/VNAV all Cats and LNAV Cats C/D visibility ¼ mile.

MISSED APPROACH: Climb to 3000 direct ULEYE and right turn on track 223° to MARIC and hold.

ATIS 118.6	BAKERSFIELD APP CON * 118.8 284.625 118.9 270.3 (SOUTH) (NORTH)	BAKERSFIELD TOWER * 118.1 (CTAF) 257.8	GND CON 121.7	UNICOM 122.95
----------------------	--	--	-------------------------	-------------------------



ELEV 510	TDZE 510
----------	----------



CATEGORY	A	B	C	D
LPV DA	760-1 250 (300-1)			
LNAV/VNAV DA	1073-2 563 (600-2)			
LNAV MDA	920-1 410 (500-1)		920-1¼ 410 (500-1¼)	

TDZ/CL Rwy 30R
HIRL Rwy 12L-30R
MIRL Rwy 12R-30L
REIL Rwy 12R and 30L

SW-3, 26 DEC 2024 to 23 JAN 2025

SW-3, 26 DEC 2024 to 23 JAN 2025