


COCOA BEACH, FLORIDA

# ILS or LOC RWY 3

LOC I-COF <b>109.1</b>	APCH CRS <b>027°</b>	Rwy Idg TDZE Arprt Elev <b>9008</b> <b>5</b> <b>8</b>	[USAF]	PATRICK SFB (KCOF)
---------------------------	-------------------------	--	--------	--------------------

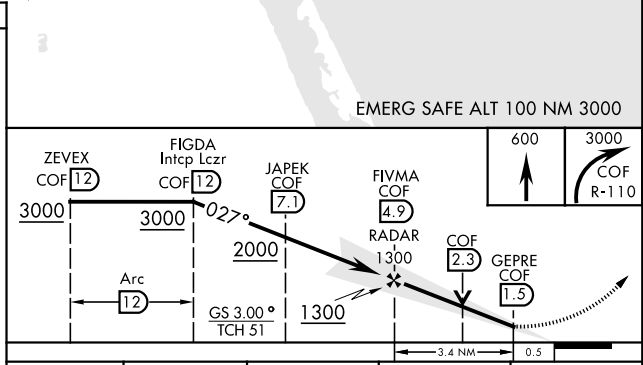
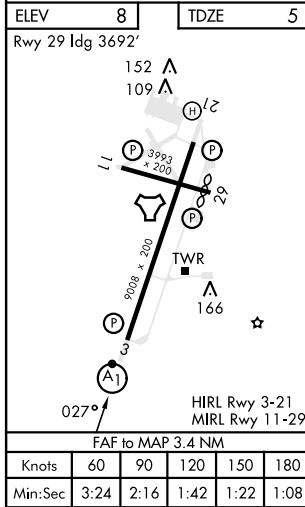
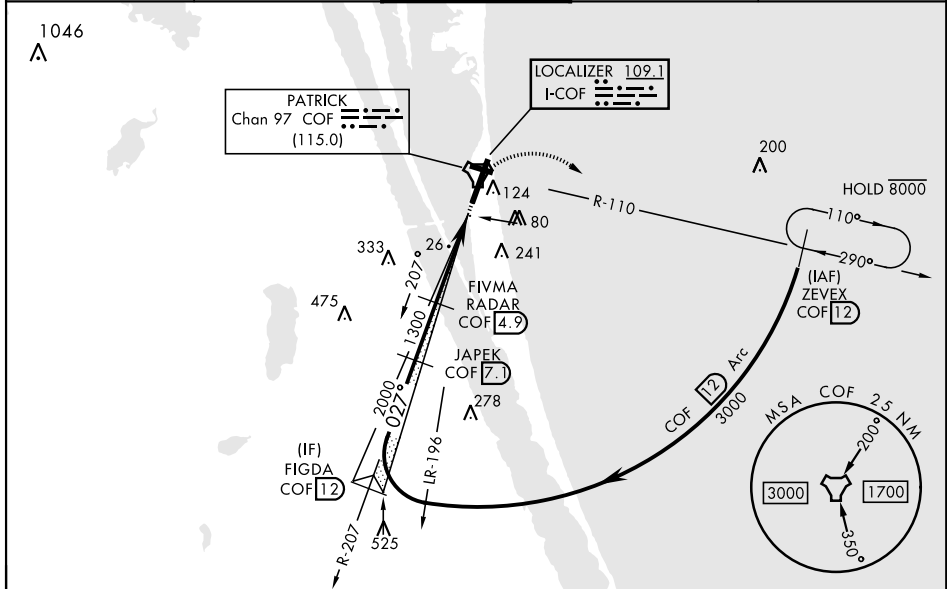
DME required

▼ \* When ALS inop, increase RVR to 40 and vis to ¾ mile.  
 \*\* When ALS inop, increase CAT AB RVR to 55, vis to 1 mile;  
 CAT CD vis to 1 ¾ miles.  
 \*\*\* Circling not authorized NW of Rwy 3-21. When Rwy 29 VGSI inop, circling to Rwy 29 NA at night. When circling to Rwy 29 at night, operational VGSI required, remain on or above VGSI glidepath until threshold.

ALSF-1 

MISSED APPROACH: Climb to 600, then climbing right turn to 3000 and intercept COF TACAN R-110 direct ZEVEX/COF 12 DME and hold.

ATIS ★ <b>119.175 273.5</b>	ORLANDO APP CON★ <b>132.65 281.425</b>	TOWER ★ <b>133.75 269.375</b>	GND CON ★ <b>124.35 335.8</b>	CLNC DEL ★ <b>118.4 289.4</b>
--------------------------------	---	----------------------------------	----------------------------------	----------------------------------



CATEGORY	A	B	C	D
S-ILS 3 *	205/24		200	(200-½)
S-LOC 3 **	460/24	455 (500-½)	460/45	455 (500-¾)
<b>C</b> CIRCLING ***	520-1	512 (600-1)	540-1½ 532 (600-1½)	560-2 552 (600-2)

COCOA BEACH, FLORIDA      28° 14'N-80° 37'W      PATRICK SFB (KCOF)

Amdt 3 02NOV23

# ILS or LOC RWY 3

SE-3, 26 DEC 2024 to 23 JAN 2025

SE-3, 26 DEC 2024 to 23 JAN 2025