

COCOA BEACH, FLORIDA

RNAV (GPS) RWY 3

APCH CRS	Rwy Idg	9008
027°	TDZE	5
	Arprt Elev	8

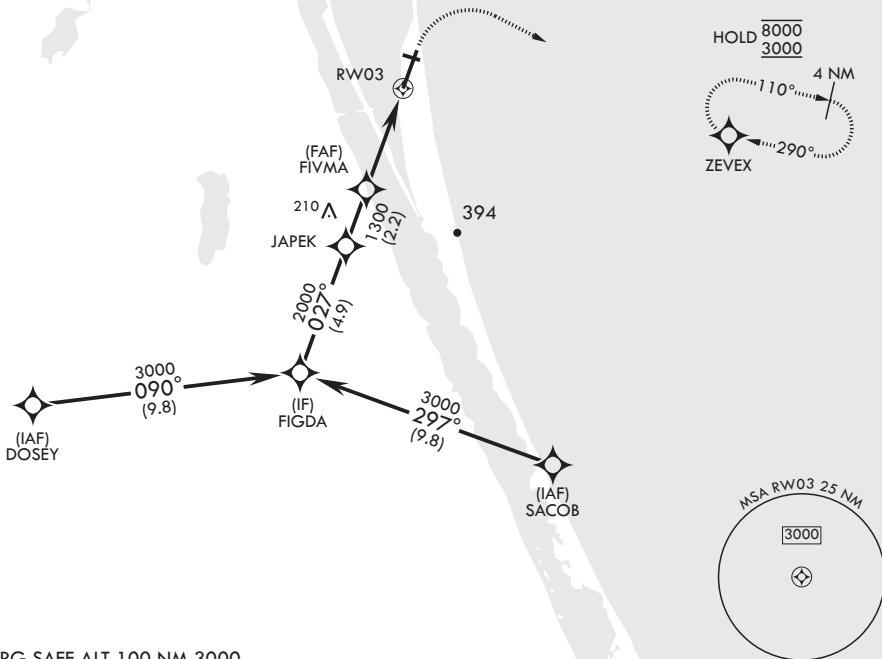
-(USAF)

PATRICK SFB (KCOF)

RNP APCH-GPS	ALSIF-1	MISSED APPROACH: Climb to 600 then climbing right turn to 3000 direct ZEVEX and hold.
<p>▼ * When ALS inop, increase CAT AB RVR to 55, vis to 1 mile; CAT CD vis to 1 3/8 miles. ** Circling not authorized NW of RWY 3-21.</p>		

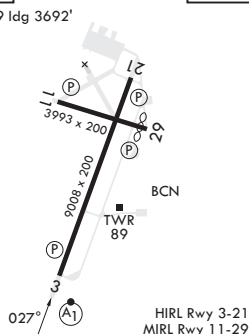
ATIS*	ORLANDO APP CON/DEP CON*	TOWER*	GND CON*	CLNC DEL*
119.175 273.5	132.65 281.425	133.75 269.375	124.35 335.8	118.4 289.4

When circling to Rwy 29 at night, operational VGSI required, remain on or above VGSI glidepath until threshold.



EMERG SAFE ALT 100 NM 3000

FIGDA	3000	027°	JAPEK	2000	FIVMA	1300	3.00° ≥ TCH 53	1.3 NM to RWY 3	RWY 3	600	3000	ZEVEX	ELEV 8	TDZE 5
													Rwy 29 Idg 3692'	
CATEGORY	A		B		C		D							
LNAV MDA*	480/24	475	(500-½)		480/50	475	(500-1)							
CIRCLING**	520-1	512	(600-1)		540-1½	532	(600-1½)		560-2	552 (600-2)				



COCOA BEACH, FLORIDA

28°14'N - 80°37'W

PATRICK SFB (KCOF)

Orig 11JUL24

RNAV (GPS) RWY 3

SE-3, 26 DEC 2024 to 23 JAN 2025

SE-3, 26 DEC 2024 to 23 JAN 2025

HIRL Rwy 3-21
MIRL Rwy 11-29