

BANGOR, MAINE

HI-ILS Z or LOC Z RWY 15

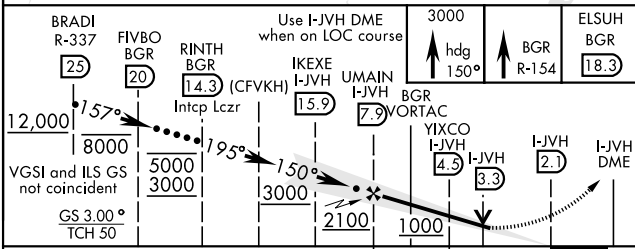
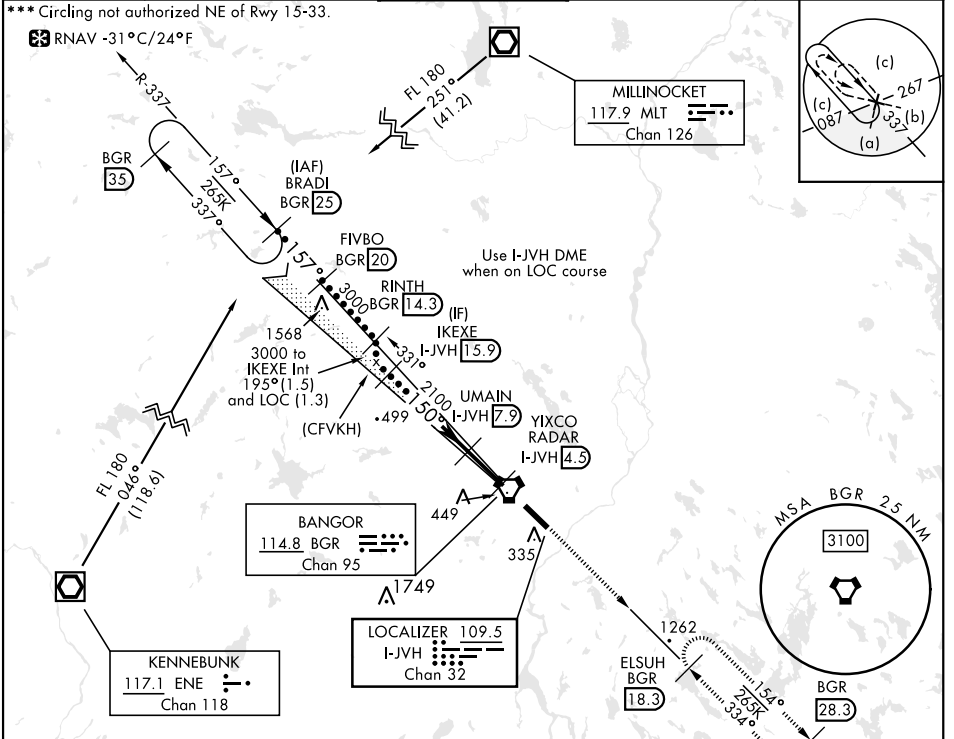
LOC/DME I-JVH 109.5 Chan 32	APCH CRS 150°	Rwy Idg 11,440 TDZE 192 Arpt Elev 192
---	-------------------------	--

AL-39 [USAF]

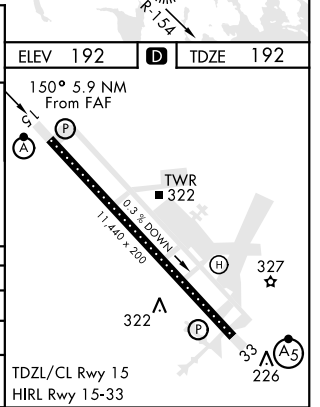
BANGOR INTL (KBGR)

DME required.	ALSF-2	MISSED APPROACH: Climb to 3000 via heading 150° and BGR VORTAC R-154 to ELSUH (R-154/18.3 DME) and hold.
* When ALS inop, increase CAT E RVR to 40. ** When ALS inop, increase CAT CDE vis to 1 3/4 miles.		

ATIS 127.75	APP CON 118.925 239.3	TOWER 120.7 233.7	GND CON 121.9 348.6	ASR
-----------------------	---------------------------------	-----------------------------	-------------------------------	-----



CATEGORY	C	D	E
S-ILS 15*	392/18	200 (200-1/2)	
S-LOC 15**	660/50	468 (500-1)	
CIRCLING ***	740-1 1/2 548 (600-1 1/2)	820-2 628 (700-2)	880-2 1/2 688 (700-2 1/2)



BANGOR, MAINE

44°48'N-68°50'W

BANGOR INTL (KBGR)

Amdt 2 02DEC21

HI-ILS Z or LOC Z RWY 15

NE-1, 26 DEC 2024 to 23 JAN 2025

NE-1, 26 DEC 2024 to 23 JAN 2025