

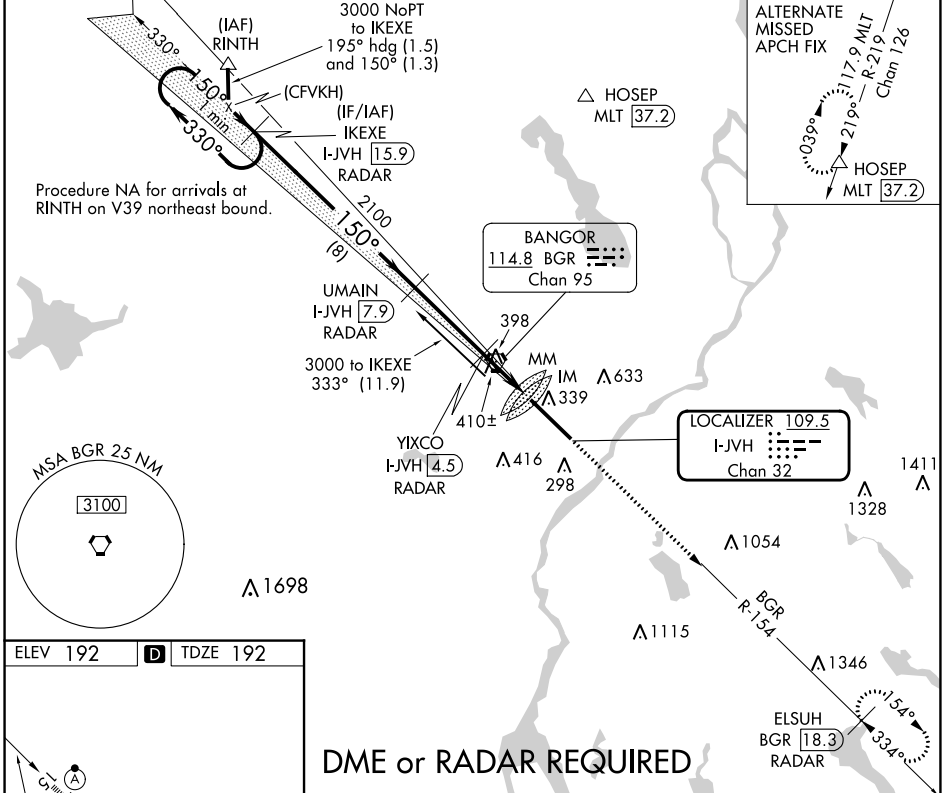
LOC/DME I-JVH	APP CRS	Rwy Idg	<b>11440</b>
<b>109.5</b>	<b>150°</b>	TDZE	<b>192</b>
Chan <b>32</b>		Apt Elev	<b>192</b>

# ILS Y or LOC Y RWY 15

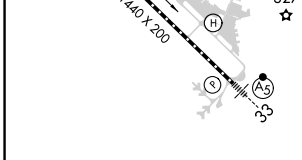
BANGOR INTL (BGR)

<p>ASR</p>	<p>Circling NA NE of Rwy 15-33. DME or RADAR required. For inoperative ALS, increase S-ILS 15 Cat E visibility to RVR 4000, and S-LOC 15 Cat C/D/E visibility to 1 1/2 SM.</p>	<p>ALSIF-2</p>	<p>MISSED APPROACH: Climb to 3000 on heading 150° and BGR VORTAC R-154 to ELSUH/BGR 18.3 DME/RADAR and hold.</p>

ATIS	BANGOR APP CON	BANGOR TOWER	GND CON	CLNC DEL
<b>127.75</b>	<b>118.925 239.3</b>	<b>120.7 233.7</b>	<b>121.9 348.6</b>	<b>135.9 348.6</b>



ELEV 192	<b>D</b>	TDZE 192
----------	----------	----------



**DME or RADAR REQUIRED**

One Minute Holding Pattern	IKEXE I-JVH [15.9] RADAR	3000	hdg 150°	BGR R-154	ELSUH BGR [18.3] RADAR
	UMAIN I-JVH [7.9] RADAR				
	YIXCO I-JVH [4.5] RADAR				
	MM IM				
	I-JVH [3.3]				
	I-JVH [2.1]				

\*LOC only.

GS 3.00° TCH 50  
VGS1 and ILS glidepath not coincident (VGS1 Angle 3.00/TCH 55).

← 8 NM → ← 3.4 NM → 1.1 0.9 0.3 0.1

CATEGORY	A	B	C	D	E
S-ILS 15	392/18 200 (200-1/2)				
S-LOC 15	660/24	468 (500-1/2)	660/50	468 (500-1)	
<input checked="" type="checkbox"/> CIRCLING	660-1	720-1	740-1 1/2	820-2	880-2 1/2
	468 (500-1)	528 (600-1)	548 (600-1 1/2)	628 (700-2)	688 (700-2 1/2)

NE-1, 26 DEC 2024 to 23 JAN 2025

NE-1, 26 DEC 2024 to 23 JAN 2025