

WAAS CH 81825 W04A	APP CRS 043°	Rwy Idg 7500 TDZE 69 Apt Elev 70
--	------------------------	---

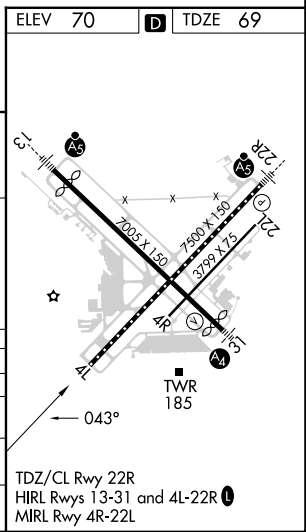
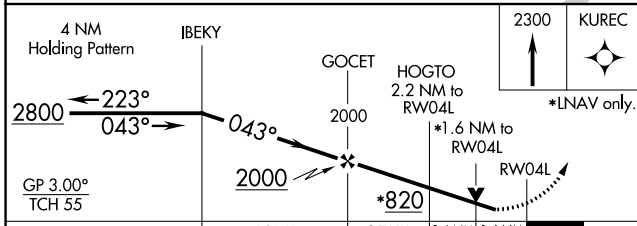
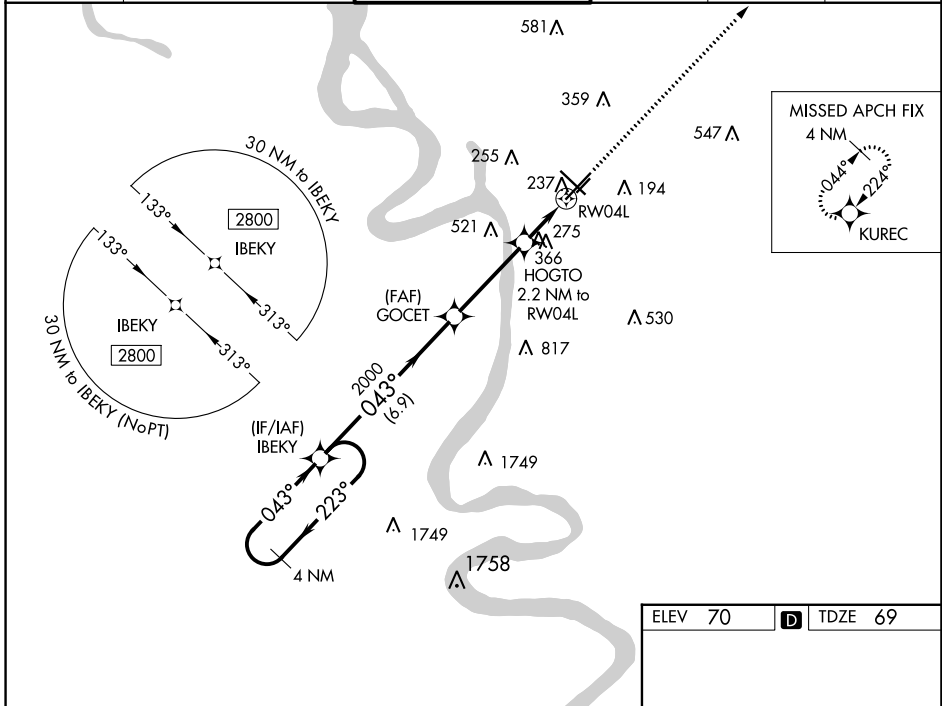
RNAV (GPS) RWY 4L

BATON ROUGE METRO, RYAN FLD (BTR)

⚠ For uncompensated Baro-VNAV systems, LNAV/VNAV NA below -5°C (23°F) or above 54°C (130°F).
⚠ DME/DME RNP-0.3 NA. Baro-VNAV and VDP NA when using Hammond altimeter setting. When local altimeter setting not received, use Hammond altimeter setting and increase all DA 91 feet and all MDA 100 feet; increase LPV visibility ¼ mile all Cats, LNAV/VNAV visibility ½ mile all Cats and LNAV Cat C/D visibility ¼ mile, Circling Cat C/D visibility ¼ mile. Helicopter visibility reduction below ¾ SM NA.

MISSED APPROACH:
Climb to 2300 direct KUREC and hold.

ATIS 125.2	BATON ROUGE APP CON* 120.3 278.3	RYAN TOWER* 118.45 (CTAF) 257.8	GND CON 121.9	CLNC DEL 119.4	UNICOM 122.95
----------------------	--	---	-------------------------	--------------------------	-------------------------



ELEV 70	TDZE 69																											
<table border="1"> <thead> <tr> <th>CATEGORY</th> <th>A</th> <th>B</th> <th>C</th> <th>D</th> </tr> </thead> <tbody> <tr> <td>LPV DA</td> <td colspan="2">345-⁷/₈</td> <td colspan="2">276 (300-⁷/₈)</td> </tr> <tr> <td>LNAV/VNAV DA</td> <td colspan="2">656-2</td> <td colspan="2">587 (600-2)</td> </tr> <tr> <td>LNAV MDA</td> <td colspan="2">620-1 551 (600-1)</td> <td colspan="2">620-1⁵/₈ 551 (600-1⁵/₈)</td> </tr> <tr> <td>C CIRCLING</td> <td>620-1 550 (600-1)</td> <td>660-1 590 (600-1)</td> <td>780-2 710 (800-2)</td> <td>840-2¹/₂ 770 (800-2¹/₂)</td> </tr> </tbody> </table>				CATEGORY	A	B	C	D	LPV DA	345- ⁷ / ₈		276 (300- ⁷ / ₈)		LNAV/VNAV DA	656-2		587 (600-2)		LNAV MDA	620-1 551 (600-1)		620-1 ⁵ / ₈ 551 (600-1 ⁵ / ₈)		C CIRCLING	620-1 550 (600-1)	660-1 590 (600-1)	780-2 710 (800-2)	840-2 ¹ / ₂ 770 (800-2 ¹ / ₂)
CATEGORY	A	B	C	D																								
LPV DA	345- ⁷ / ₈		276 (300- ⁷ / ₈)																									
LNAV/VNAV DA	656-2		587 (600-2)																									
LNAV MDA	620-1 551 (600-1)		620-1 ⁵ / ₈ 551 (600-1 ⁵ / ₈)																									
C CIRCLING	620-1 550 (600-1)	660-1 590 (600-1)	780-2 710 (800-2)	840-2 ¹ / ₂ 770 (800-2 ¹ / ₂)																								

SC-4, 26 DEC 2024 to 23 JAN 2025

SC-4, 26 DEC 2024 to 23 JAN 2025