

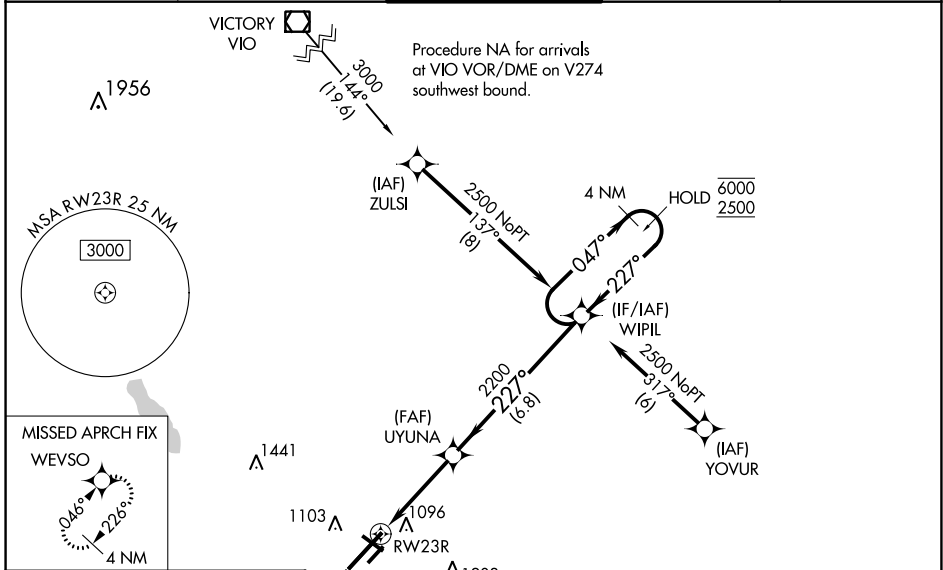
WAAS CH 56411 W23A	APP CRS 227°	Rwy Idg 10004 TDZE 929 Apt Elev 952
--	------------------------	--

RNAV (GPS) RWY 23R

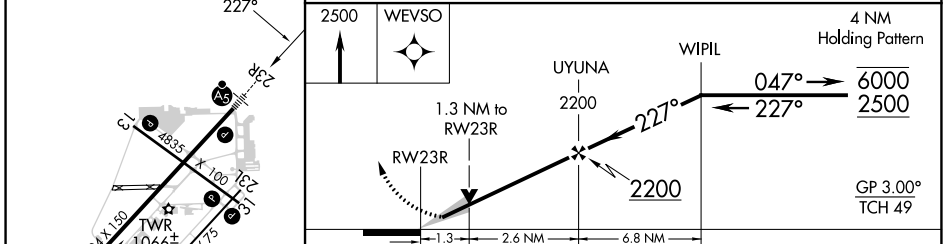
BATTLE CREEK EXEC AT KELLOGG FLD (BTL)

RNP APCH - GPS.			MISSED APPROACH: Climb to 2500 direct WEVSO and hold.
⚠ For uncompensated Baro-VNAV systems, LNAV/VNAV NA below -20°C or above 54°C. ⚠ Circling to Rwy 5R, 23L and 31 NA at night. When local altimeter setting not received, use Grand Rapids altimeter setting: increase all LPV DA to 1236 feet and LNAV/VNAV DA to 1365 feet and visibility to RVR 5000 all Cats; increase all MDA 120 feet, LNAV Cats C and D visibility to 1¼ SM and Circling Cat C visibility to 2 SM and Cat D visibility to 2½ SM. For inop ALS when using Grand Rapids altimeter setting, increase LPV all Cats visibility to RVR 5000 and LNAV Cats C and D to visibility 1½ SM. Baro-VNAV and VDP NA when using Grand Rapids altimeter setting. *RVR 1800 authorized with use of FD or AP or HUD to DA.			

ATIS 128.325	GREAT LAKES APP CON* 119.2 239.25	BATTLE CREEK TOWER* 126.825 (CTAF)	GND CON 121.7	UNICOM 122.95
------------------------	---	--	-------------------------	-------------------------



ELEV 952	D	TDZE 929
----------	----------	----------



CATEGORY	A	B	C	D
LPV DA *		1129/24	200 (200-½)	
LNAV/VNAV DA		1258/32	329 (400-⅝)	
LNAV MDA	1380/24	451 (500-½)	1380/45	451 (500-⅞)
C CIRCLING	1420-1 468 (500-1)	1480-1 528 (600-1)	1520-1½ 568 (600-1½)	1520-2 568 (600-2)

HIRL Rwy 5L-23R
MIRL Rwy 13-31 and 5R-23L
REIL Rws 5L, 5R, 13, 23L and 31L

EC-1, 26 DEC 2024 to 23 JAN 2025

EC-1, 26 DEC 2024 to 23 JAN 2025