

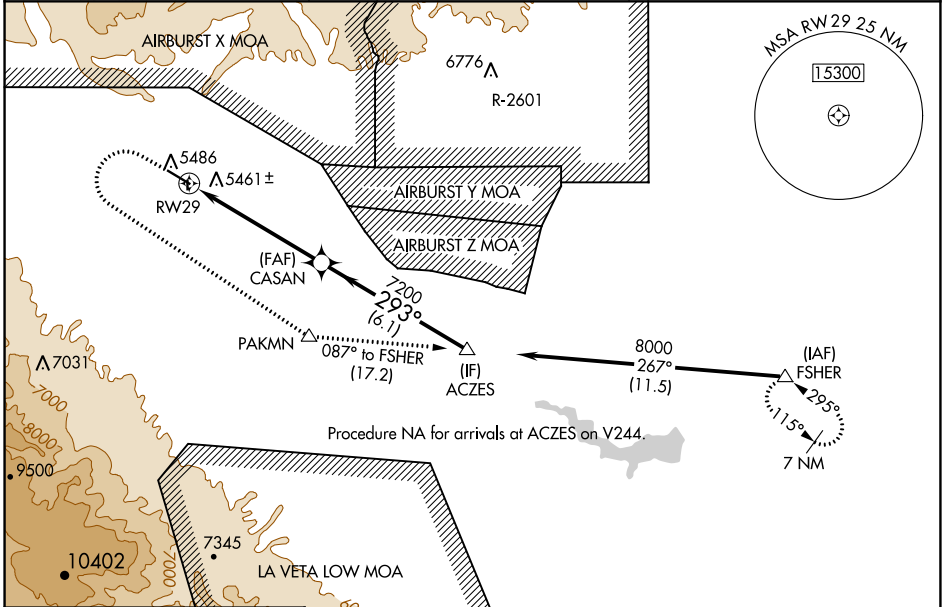
WAAS CH <b>69530</b> <b>W29A</b>	APP CRS <b>293°</b>	Rwy Idg TDZE Apt Elev	<b>5399</b> <b>5407</b> <b>5442</b>
--	------------------------	-----------------------------	---

# RNAV (GPS) RWY 29

FREMONT COUNTY (1V6)

RNP APCH. ▼ For uncompensated Baro-VNAV systems, LNAV/VNAV NA below -25°C or above 54°C. Circling NA north of Rwy 11-29. Circling NA to Rwy 35.	MISSED APPROACH: (Do not exceed 210K until PAKMN) Climb to 5900 then climbing left turn to 8000 direct PAKMN and track 087° to FSHER and hold.
--	--

AWOS-3 <b>120.025</b>	DENVER APP CON * <b>120.1 290.5</b>	UNICOM <b>122.8</b> (CTAF) <b>0</b>
--------------------------	--	--



ELEV <b>5442</b>	TDZE <b>5407</b>
------------------	------------------

	5900	8000	PAKMN	tr 087°	FSHER	VGSI and RNAV glidepath not coincident (VGSI Angle 3.00/TCH 40).				
	↑	↷	△		△	ACZES				
	* LNAV only.					RWY 29				
	* 0.9 NM to RWY 29					CASAN				
	0.9 NM					7200				
	4.6 NM					293°				
	6.1 NM					8000				
						GP 3.00° TCH 55				
	REIL Rws 11 and 29	MIRL Rwy 11-29								
	CATEGORY					A	B	C	D	
	LPV DA					5657-3/4		250 (300-3/4)		NA
	LNAV/VNAV DA					5657-3/4		250 (300-3/4)		NA
	LNAV MDA					5720-1		313 (300-1)		5720-7/8 313 (300-7/8)
	CIRCLING					5800-1 358 (400-1)		5900-1 458 (500-1)		5980-1 1/2 538 (600-1 1/2)

SW-1, 26 DEC 2024 to 23 JAN 2025

SW-1, 26 DEC 2024 to 23 JAN 2025