

LOC I-OXK 109.9	APP CRS 139°	Rwy Idg 8006 TDZE 459 Apt Elev 459
---------------------------	------------------------	---

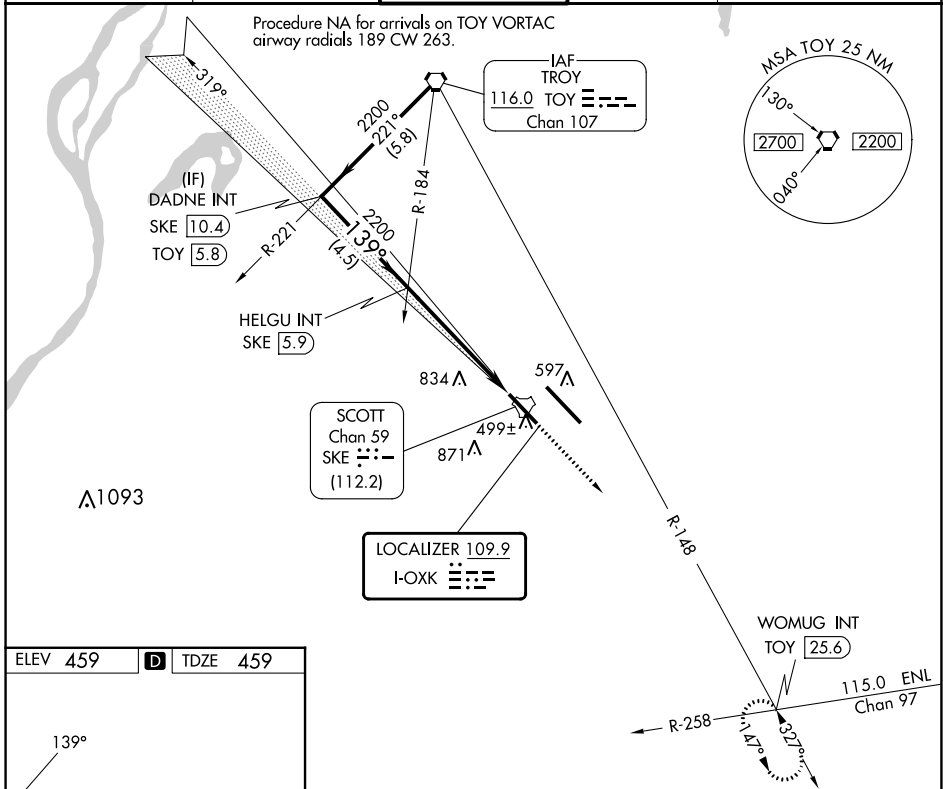
ILS or LOC RWY 14R

SCOTT AFB/MIDAMERICA ST LOUIS (BLV)

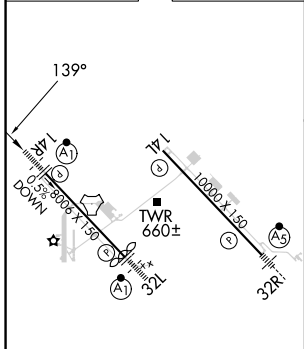
⚠ For inop ALS, increase S-ILS 14R Cat E visibility to RVR 4000 and S-LOC 14R Cat E visibility to 1 3/4 mile. DME from SKE TACAN. DME use requires simultaneous reception of I-OXK and SKE DME.
⚠ ASR *RVR 1800 authorized with use of FD or AP or HUD to DA.

ALSIF-1
MISSED APPROACH: Climb to 2200 then on TOY VORTAC R-148 to WOMUG INT/TOY 25.6 DME and hold.

ATIS ★ 128.7 256.7	ST LOUIS APP CON 125.2 281.5	SCOTT TOWER 128.25 253.5	GND CON 119.2 275.8	CLNC DEL 119.875 263.025
------------------------------	--	------------------------------------	-------------------------------	------------------------------------



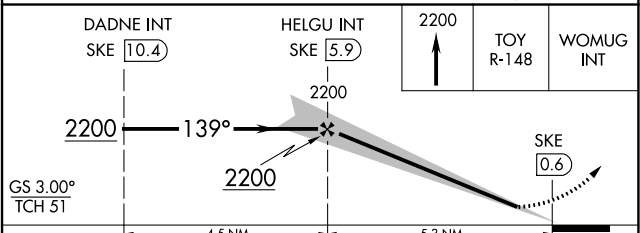
ELEV 459	D	TDZE 459
-----------------	----------	-----------------



HIRL Rwy 14L-32R and 14R-32L
 REIL Rwy 14L

FAF to MAP 5.3 NM

Knots	60	90	120	150	180
Min:Sec	5:18	3:32	2:39	2:07	1:46



CATEGORY	A	B	C	D	E
S-ILS 14R*	659/24 200 (200-1/2)				
S-LOC 14R	1040/24	581 (600-1/2)	1040-1 1/4 581 (600-1 1/4)		
C CIRCLING	1040-1 581 (600-1)	1120-1 661 (700-1)	1240-2 1/4 781 (800-2 1/4)	1240-2 1/2 781 (800-2 1/2)	1240-2 3/4 781 (800-2 3/4)

EC-3, 26 DEC 2024 to 23 JAN 2025

EC-3, 26 DEC 2024 to 23 JAN 2025