

LINDBERGH EIGHT DEPARTURE

ATIS ★

128.7 256.7

CLNC DEL

119.875 263.025

GND CON

119.2 275.8

SCOTT TOWER

128.25 253.5

ST LOUIS DEP CON

125.2 281.5

ST LOUIS
117.4 STL :::::
Chan 121

**TOP ALTITUDE:
3000**

VICHY
117.7 VIH :::::
Chan 124

FARMINGTON
115.7 FAM :::::
Chan 104

WALNUT RIDGE
114.5 ARG :::::
Chan 92

LITTLE ROCK
113.9 LIT :::::
Chan 86

EC-3, 26 DEC 2024 to 23 JAN 2025

EC-3, 26 DEC 2024 to 23 JAN 2025

TAKEOFF MINIMUMS

Rwys 14L/R, 32R: Standard.

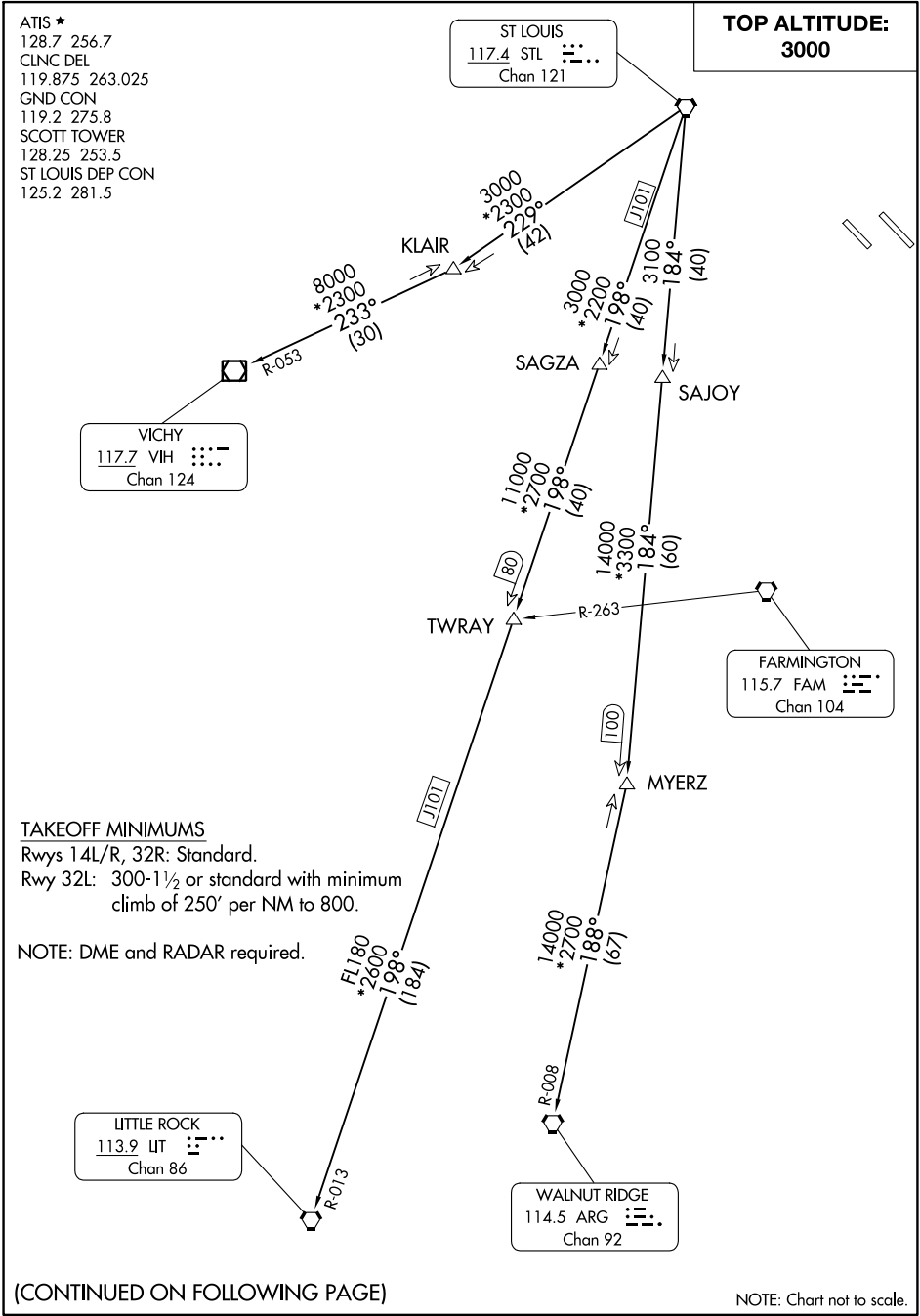
Rwy 32L: 300-1½ or standard with minimum climb of 250' per NM to 800.

NOTE: DME and RADAR required.

(CONTINUED ON FOLLOWING PAGE)

NOTE: Chart not to scale.

LINDBERGH EIGHT DEPARTURE





DEPARTURE ROUTE DESCRIPTION

Climb on assigned heading for vector to appropriate route, maintain 3000 or assigned altitude, thence

. . . . (transition). Expect filed altitude 10 minutes after departure.

LITTLE ROCK TRANSITION (LINDY8.LIT): From over STL VORTAC on STL R-198 to TWRAY, then on STL R-198 and LIT R-013 to LIT VORTAC.

MYERZ TRANSITION (LINDY8.MYERZ): From over STL VORTAC on STL R-184 to MYERZ.

VICHY TRANSITION (LINDY8.VIH): From over STL VORTAC on STL R-229 to KLAIR, then on VIH R-053 to VIH VOR/DME.

WALNUT RIDGE TRANSITION (LINDY8.ARG): From over STL VORTAC on STL R-184 to MYERZ, then on ARG R-008 to ARG VORTAC.

EC-3, 26 DEC 2024 to 23 JAN 2025

EC-3, 26 DEC 2024 to 23 JAN 2025