

BILLINGS, MONTANA

# HI-ILS Z or LOC Z RWY 10L

LOC/DME I-BIL <b>111.5</b> Chan <b>52</b>	APCH CRS <b>102°</b>	Rwy Idg <b>10,518</b> TDZE <b>3585</b> Arprt Elev <b>3662</b>
---	-------------------------	---

AL-48 [USAF]

BILLINGS LOGAN INTL (KBIL)

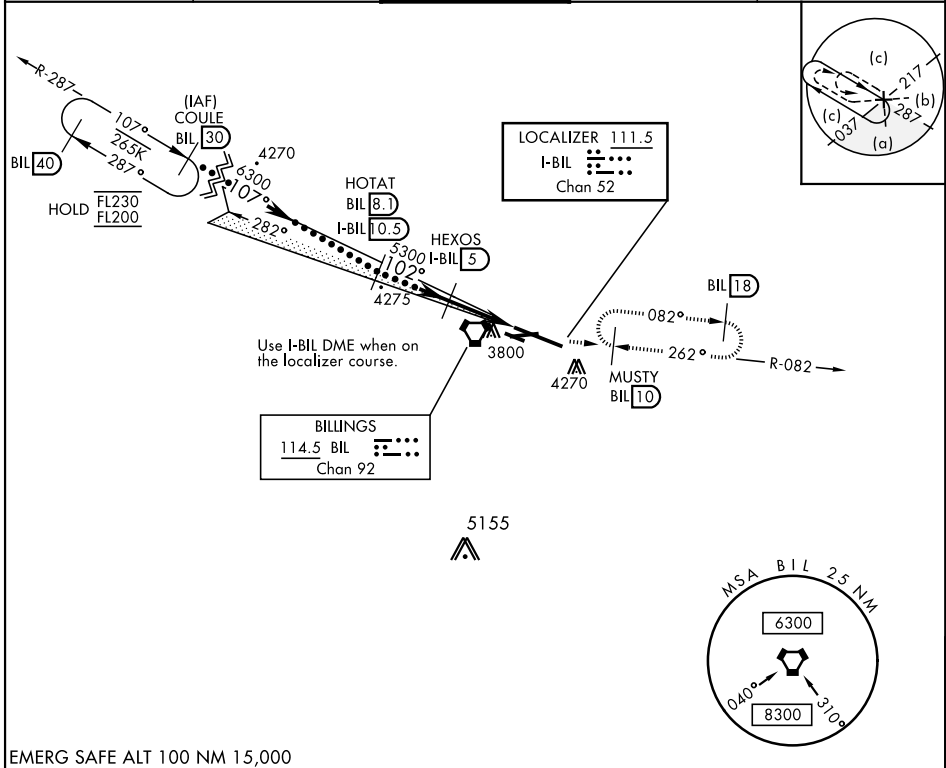
DME required. RADAR required for procedure entry.



MISSED APPROACH: Climb to 5700 on BIL VORTAC R-082 to MUSTY/10 DME and hold.

▼ \* When ALS inop, increase CAT E RVR to 40.  
\*\* When ALS inop, increase CAT CDE RVR to 60.

ATIS <b>126.3</b>	BILLINGS APP CON <b>120.5 284.6</b>	BILLINGS TOWER <b>127.2 257.8</b>	GND CON <b>121.9</b>	CLNC DEL <b>121.9</b>
----------------------	--	--------------------------------------	-------------------------	--------------------------

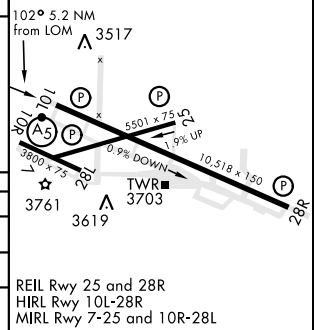


NW-1, 26 DEC 2024 to 23 JAN 2025

NW-1, 26 DEC 2024 to 23 JAN 2025

EMERG SAFE ALT 100 NM 15,000

COULE BIL 30 FL200 GS 3.00° TCH 51	HOTAT BIL 8.1 I-BIL 10.5	HEXOS I-BIL 5	ZOBUM I-BIL 2.1 I-BIL 1	LOC DME	5700 BIL R-082	MUSTY BIL 10	ELEV 3662	TDZE 3585
CATEGORY	C	D	E					
S-ILS 10L *		3785/24	200 (200-½)					
S-LOC 10L **		4000/40	415 (500-¾)					
CIRCLING	4180-1½ 518 (600-1½)	4580-3	918 (1000-3)					



BILLINGS, MONTANA

45°48'N-108°33'W

BILLINGS LOGAN INTL (KBIL)

Amdt 4A 22APR21

# HI-ILS Z or LOC Z RWY 10L